

Letters to Santa Are Welcome

Youngsters in the Wayne area planning on writing letters to Santa Claus are reminded that they can send those letters to Santa by addressing them to The Wayne Herald.

Letters will be quickly forwarded to Santa at the North Pole, giving him a chance to get all those gifts ready for delivering on Christmas Eve.

In addition, letters from area youngsters will be printed in The Wayne Herald throughout the Christmas season. Youngsters should make sure they include their names, age and home town on their letter.

This Issue...22 Pages — Two Sections PLUS SUPPLEMENTS

THE WAYNE HERALD

Second Class Postage Paid at Wayne, Nebraska

WAYNE, NEBRASKA 68787, THURSDAY, NOVEMBER 28, 1974
NINETY-NINTH YEAR NUMBER FORTY-FIVE

Published Every Monday and Thursday at 114 Main, Wayne, Nebraska 68787



Tops in Conservation

A WAYNE farm couple, Mr. and Mrs. Merle Ring, left, show off the large color photograph of their farm east of Wayne presented to them by Robert Jordan, cashier at State National Bank and Trust Co. in Wayne, during Monday evening's annual banquet of the Lower Elkhorn Natural Resources District at Stanton. The Rings were among nine farm families cited for their conservation activities during the banquet. Also awarded a picture by the Wayne bank was Robert Dean Pippitt, who farms near Laurel.

Dixon County Sheriff Seeks Crime Fighters

Dixon County sheriff Dean Chase of Allen is urging citizens to take a "more active role" in crime prevention.

Noting that FBI figures show an overall 15 per cent increase in crime throughout the nation, he said that law enforcement officials often are unable to cope with crime unless they receive help from private citizens.

He said a program being conducted in Dixon County through his office is designed to increase citizen awareness and involvement in stemming crime. Called the National Neighborhood Watch project, it is of little value without the support and participation of the general public, he noted.

Chase said he now has an adequate supply of materials to help alert the citizens to some simple steps they can take to help protect their property. The materials are free and may be obtained by writing Chase at his office in Ponca or by telephoning the office at 755-2522.

Now that children are back in school and many mothers are working during the school day, there are fewer persons in any neighborhood who might notice See "FIGHTERS", page 7



When room rates at Wayne State were \$1.75 per week

Fund Drive Is \$1,000 Short

With about 100 cards still not turned in by volunteer workers, this year's Community Chest fund drive in Wayne lacked slightly more than \$1,000 of reaching the goal as of early this week.

Secretary treasurer Vera Hummel said a total of \$10,419.83 had been collected by Monday afternoon.

This year's goal is \$11,450.

Drive officials continue their requests for volunteers to contact the people who they have cards for and ask them for their donations to this year's drive.

Those officials have noted that it will be a shame to get so close to this year's goal and still not reach it if the volunteers do not complete their calls.

However, these officials have expressed appreciation to the volunteers who have helped conduct the drive and to the individuals and businesses who have donated.

City Stores To Be Open Friday Night

Stores in Wayne will stay open Friday night of this week because Thanksgiving falls on Thursday.

This week's winning date in the Birthday Bucks drawing will be announced that evening, at 8:15 in all participating stores. The grand prize is worth \$700 to the person present in one of those stores whose birthday matches the date drawn at random earlier in the day.

The first Christmas Bucks prize will be awarded on Monday, Dec. 9, the first evening all stores in the city will be open for Christmas shopping. That prize will be worth \$300 in coupons, which can be spent at any participating store or business.

Stores also will stay open on six other evenings during December: Dec. 13, 16, 17, 18, 20 and 23, as well as on the regular Thursday evenings to enable shoppers to make their last minute Christmas purchases. On each of these eight special open nights in December a \$100 Christmas Bucks prize will be awarded, and on the final Christmas See STORES, page 7

Surveys Still Around? Drop Them Off Soon

Wayne residents who have not had their community attitude surveys picked up by volunteers are urged to drop them off at the Chamber of Commerce, Sav-Mor Drugs, First National Bank or State National Bank.

Rowan Willse, one of the local businessmen active in getting the survey drawn up for distribution throughout the city, said

NPPD Board Okays Hike in Retail Rates

The Nebraska Public Power District (NPPD) board of directors last week approved a general rate increase for NPPD's retail customers, the district's first retail rate increase since Jan. 1, 1972.

The increase will be for all retail residential and commercial customers served by NPPD.

Affected by the increase, which becomes effective Jan. 1 and will be applied to customer billings on and after March 1, are customers in Allen, Concord, Dixon, Pilger, Hoskins and Waverly, according to NPPD.

The average residential customer in average sized community served at retail by NPPD who uses 750 kilowatts per month will have an increase of about \$1.85 per month on his electric bill, NPPD said.

The increase affects just those communities where NPPD sells power to customers and does not affect those where the district sells power wholesale to municipal power plants, district officials explained.

The NPPD board cited the recent large increases in the cost of providing electricity to its customers as the major reason for the rate hike. The board cited increases in the cost of utility poles, cross arms, guy strand wire, drop cables and insulators in announcing the rate hike. Also forcing the rate hike is the cost of added environmental protection equipment for two of NPPD's existing generating plants, the Sheldon Station near Hallam and the Kramer Station at Bellevue.

fewer than 500 of the questionnaires have been collected by earlier this week, considerably under the number necessary for an accurate picture is to be drawn from the answers given to the questions on the survey.

Volunteers have been attempting to get the surveys returned to the community in the past few days, but they have been unable to collect surveys from many homes because people have been gone, according to Willse.

Those people who still have the surveys around their homes are urged to complete them and return them as soon as possible, he said.

Some 1,100 of the surveys were distributed in the community on Honey Sunday. In addition, all 100 members of the Wayne High School senior class and between 100 and 150 rural families have been asked to complete the surveys, according to Willse.

Answers to the numerous questions on the survey will be fed into computers by officials at the state economic development department in Lincoln, which worked with local residents in drawing up the questions.

State officials will compile these survey results into a small booklet which should give a clearer picture of how the community feels on everything from attracting industry to increasing cultural opportunities.

The survey, the first comprehensive one conducted in the community in several years, should provide local and area governmental bodies, service organizations and the like with information that could make their job of serving the public easier, survey workers feel.



KRET SCHILLING

Wayne Herald Scholarship Winners Picked

Recipients of scholarships from The Wayne Herald for study this term at Wayne State College are Bev Shilling, daughter of Mr. and Mrs. Glenn Schilling of Bancroft; Sherry Lynn Christman, daughter of Mr. and Mrs. David A. Madsen of South Sioux City and Kevin Kret, son of Shirley Kret of Coleridge.

Miss Schilling ranked second in her 1974 graduating class of Bancroft Public School and is a sophomore at WSC. She plans to major in elementary education with a special education minor.

High school activities included chorus, pep club, volleyball, newspaper staff, annual staff, class plays and speech activities. She was a cheerleader and served as class president and class secretary.

Miss Christman is a 1974 graduate of South Sioux City Community High School. A freshman at WSC, she plans to major in Spanish and carry an English minor.

Her high school activities and involvement included Spanish club, pep club, pep club council representative, American Field Service, Spanish honor society. See WINNERS, page 10

Bequest Makes Library Bigger At Wayne State

A bequest by the late Hilda C. Buehler of Madison has made the Wayne State College Community Library the recipient of a 400-volume collection of educational books.

Charles Stelling, director of informational services at WSC, said the books arrived last week.

Hilda Buehler died Oct. 2 at Concord, Dixon, Laurel, Ponca and Wakefield are nearing the end of their seven-week session of classes at the Northeast Station near Concord. For a series of pictures and a story, turn to page 6 of the second section. See BEQUEST, page 3



Christmas Decorations Going Up

WAYNE STATE student Tom Harm hands fraternity brother Ken Otte another of the Christmas lights which were being put up in Wayne during a windy, chilly Monday. Harm and Otte joined two other members of Wayne State's Alpha Beta Sigma Fraternity, Ken Nadrcchal and Doug Goodyear, to help city street and light department employees and the Wayne County Public Power District in putting up the Christmas decorations. The decorations, which are owned by the Chamber of Commerce, will be lighted after Thanksgiving, according to Bill Workman, Chamber member in charge of getting the lights put up.



'Move That Leg Very Gently'

FIRST AID instructor Roy Stohler, right, helps some of his students gently move Dorcen, Noel of Laurel as the volunteers to let them practice putting a splint on her leg as if it had been broken. The 25 students from Wayne,

Concord, Dixon, Laurel, Ponca and Wakefield are nearing the end of their seven-week session of classes at the Northeast Station near Concord. For a series of pictures and a story, turn to page 6 of the second section.

The Weather

Date	Hi	Lo	Precip.
Nov. 20	54	30	
21	52	20	
22	56	30	
23	64	30	
24	36	18	.07
25	38	12	
Total this month: .14			



MRS. HARLAND PANKRATZ

Weekly Prize Worth \$700

Some lucky area shopper may win \$700 in Birthday Bucks in this week's drawing, scheduled for Friday evening because Wayne stores will be closed Thursday night.

The prize jumps to that level as a result of another week going by with a consolation prize being awarded to a winner in the weekly drawing.

Collecting the \$25 prize from last week's drawing was Mrs. Harland Pankratz of Wayne, who was shopping in Mc Donald's when the winning date was announced. She was the person present in one of the participating stores whose birthday was closest to the date drawn at random earlier in the day. Had her birthday fallen on See PRIZE, page 10

Buying Power Dips, Study Figures Show

Because Wayne County families as a whole are earning more money now than in previous years, many of them have moved up into new and higher income brackets.

Whether they are able to buy any more with the added cash is another question.

Locally there has been a progressive shift upward. Some families, who were in the \$8,000 to \$10,000 category a few years ago, are now to be found in the \$10,000 to \$15,000 group. Their former positions on the income ladder have been taken over, in turn, by families who had been earning less than \$8,000.

The gratification of being in a loftier bracket is somewhat dampened, however, by higher tax rates on the upper rungs.

The facts and figures covering the local area and other parts of the country are contained in a report released by the Standard Rate and Data Service. It indicates for each community in the country the number of families in various income divisions.

Purpose of the study was to obtain a clearer financial picture of each locality's purchasing power than was revealed by its average income figure.

Does that average comprise a small proportion of families with big incomes counterbalancing a much larger proportion with low incomes or are earnings more evenly distributed?

In Wayne County, it is shown, no less than 54.9 per cent of the households had disposable incomes of \$8,000 or more after payment of their personal taxes.

Compared with the proportion at that level three years ago, See BUYING POWER, page 10

Name Omitted

The name of Julie Meyer was accidentally left off the published list of Wayne High School students on the first quarter honor roll, according to school officials.

A senior, she received a grade point average of 3.5 for the first nine weeks of school, placing her on the high honor roll.

Annual Christmas Fair to Feature Two New Displays

Shoppers at this year's United Methodist Christmas Fair will find everything from antiques to Christmas decorations at the eight separate merchandise booths, according to Mrs. Richard Keidel.

General chairman for the annual event, which will be held from 10 a.m. to 4 p.m. Saturday, Dec. 7, at the church fellowship hall, are Mrs. Richard Keidel, Mrs. Al Ehlers and Mrs. Jim Marsh. Shoppers should enter the north door of the church.

Wishes, pie and coffee will be served from 11 a.m. to 1:30 p.m. at a cost of \$1.55. Theme for this year's event will be "Country Fair," with workers donning red and white checked gingham aprons and hostesses wearing coordinating dresses.



EXTENSION NOTES

By Joycelyn Smith

Holiday Hold on Waistlines
Do you have trouble facing yourself in January because of what you ate in November and December?

ing hostesses and say, "Only half that sized portion, please." This works two ways, of course. When people at your table say, "Just a small piece," take them at their word.

Don't taste food while you're cooking. You could end between 200 and 400 calories (or more). Only take small portions. You can always go back for more. If you do take too much don't let your body be a garbage disposal. It's less wasteful to leave food on your plate than to stress your body with too much food.

Entries Sought For Pageant at North Platte
Girls throughout Nebraska are being sought as contestants for the Miss Nebraska Teen-Ager pageant, to be staged at the Holiday Inn in North Platte May 30-31.

Remove visible fat from before and after cooking. Skim fat from gravies and stews before thickening to reduce calories. Get satisfaction from the way food looks. Make low-calorie food festive looking and good tasting. Go creative with vegetables to add color, form and texture to your meals. Then fill yourself up with clear conscience.

To be eligible, a girl must be between the ages of 13 and 17 and a resident of the state. There is to be no swimming competition involved, judging being on the basis of scholastic achievement, poise, personality and appearance. State contestants will write an essay on the pageant theme, "Why I Am Proud To Be An American."

Feature lovely fresh fruit arrangements as a combination centerpiece and dessert. This will permit you to serve rich desserts less frequently or in smaller portions. Think enough of your own well being to stand up to food-push-

On May 31, the Little Miss Nebraska talent contest will be held at North Platte in conjunction with the Miss Nebraska Teen-Ager pageant.

Thanksgiving Program
Thursday, Nov. 28 at 2 p.m.
TREASURE ISLAND
114 Main Street, Wayne, Nebraska 68787 Phone 375-2400

THE WAYNE HERALD
Serving Northeast Nebraska's Great Farming Area
No. 45 Thursday, November 28, 1974
PRIZE WINNING NEWSPAPER 1974
NATIONAL EDITORIAL BLUE RIBBON FOUNDATION
NATIONAL PRESS-ASSOCIATION
114 Main Street Wayne, Nebraska 68787 Phone 375-2400
Established in 1875; a newspaper published semi-weekly, Monday and Thursday (except holidays), by Wayne Herald Publishing Company, Inc. J. Alan Cramer, President; entered in the post office at Wayne, Nebraska 68787. 2nd class postage paid at Wayne, Nebraska 68787.

SUBSCRIPTION RATES
In Wayne, Pierce, Cedar, Dixon, Thurston, Cuming, Stanton and Madison Counties: \$7.50 per year, \$6.00 for six months, \$4.25 for three months. Outside counties: \$8.50 per year, \$7.00 for six months, \$5.75 for three months. Single copies 15c.

CALENDAR OF EVENTS

FRIDAY, NOVEMBER 29, 1974

Senior Citizens Center beginner's Spanish class, 9 a.m.
SUNDAY, DECEMBER 1, 1974
Immanuel Lutheran Ladies Aid soup supper and bazaar
MONDAY, DECEMBER 2, 1974
American Legion Auxiliary Christmas party, Wayne Vets Club
Acme Club, Mrs. Cal Ward, 2 p.m.
Wayne-Carroll Music Boosters, high school music room, 2:30 p.m.
Wayne State College Faculty Wives and Women polluck dinner, 6 p.m., followed by tree lighting ceremony at WSC Willow Bowl, 7 p.m.
Wayne Newcomer's Club meets at Wayne Greenhouse, 7:30 p.m.
Contable Collectables Quilters Club, Mrs. John Struve, 8 p.m.
TUESDAY, DECEMBER 3, 1974
Hillside Club, Mrs. Henry Reithwisch, 1:30 p.m.
PEO, 2 p.m.
Royal Neighbors turkey dinner and Christmas party, Villa Wayne recreation hall, 6 p.m.
Mrs. Jayces progressive dinner
WEDNESDAY, DECEMBER 4, 1974
Sunshine Extension Club Christmas party, Mrs. Orville Nelson, 1 p.m.
St. Paul's Lutheran LCMW Christmas luncheon, 1 p.m.
Altona Ladies Aid Christmas luncheon and guest day, 12:30 p.m.
THURSDAY, DECEMBER 5, 1974
FNC Club, Amos Echtenkamps
Cuzins' Club, Mrs. Don Luft, 2 p.m.
Logan Homemakers, Mrs. Louis Meyer, 2 p.m.

Steve Oltmans Speaks At Woman's Club Friday

Wayne Federated Woman's Club members will hold their Christmas meeting and program at 2 p.m. Dec. 3. There will be "Christmas Around the World."

Nebraska soil and water conservation.

Golden Year Fete Planned

Fomer Allen residents, Mr. and Mrs. John Hutchings of 3473 S. 82nd St., Omaha, will mark their golden wedding anniversary Sunday, Dec. 8, with a reception from 2 to 6 p.m. in the home of their daughter, Mrs. Jim Wishstrom of 12712 Leavenworth, Omaha. All friends and relatives are invited to attend.

Engaged
The engagement of Sharon Nobbe to T. Sgt. Russell Burdum of Sioux City has been announced by the bride-elect's parents Mr. and Mrs. Orville Nobbe of Allen.
Miss Nobbe is employed with McKesson and Robbins Co. of Sioux City.
Her fiancé, the son of Mr. and Mrs. Earl Burdum of Waterbury, is an air technician with the 185th.
A February wedding is being planned.

Annual Tree Lighting Set For Monday Night

As in past years, Wayne State College Faculty Wives and Women will hold their annual Christmas tree lighting ceremony at the campus Willow Bowl.
Lights will be turned on at 7 a.m. for the ceremony this Monday, Dec. 2 and will remain on throughout December.
The public is invited to attend the lighting ceremony. Dr. Lyle Seymour, president of Wayne State College, will extend the welcome. Mrs. Fred Webber will lead singing of Christmas carols and each dorm will present one Christmas selection. Thanks to Club to Meet on 2nd
Mrs. Cal Ward will be hostess to the Acme Club meeting scheduled for 2 p.m. Dec. 2.

Brownie Troop 194

Eleven members of Brownie Troop 194 answered roll call with their favorite food when they met at the Wayne Elementary School gym Monday afternoon. Members made soldiers from potato chip containers.

Gay Starts Wednesday, Nov. 27, Dec. 3 At 7:20 and 9:20 P.M.
BARGAIN MATINEE 2 P.M. SUNDAY...\$1.00 & 75c
"I haven't had such a good time at a new movie in years"
Peter Bogdanovich
New York Magazine
THE THREE MUSKETEERS
TECHNICOLOR
PRINTS BY DE LUXE
WESLEYAN CHURCH
(George Francis, pastor)
Sunday: Sunday school, 10 a.m.
Worship: 11 evening service, 8 p.m.
Wednesday: Midweek service, 8 p.m.

Come to Church

ASSEMBLY OF GOD CHURCH
Rev. Dale P. Priest, pastor
Sunday: Sunday school, 9 a.m.
Worship: 10 a.m. evening service, 7:30 p.m.
Wednesday: Bible study and prayer service, 7:30 p.m.
EVANGELICAL FREE CHURCH
National Guard Armory
Larry Osterkamp, pastor
Sunday: Sunday school, 10 a.m.
Worship: 11 young people's meeting, 8:30 p.m. evening service, 7:30 p.m.
Wednesday: Bible Study, 504 Fair acres Road, 7:30 p.m.
FAITH EVANGELICAL LUTHERAN CHURCH
Wisconsin Synod
(A. R. Damsen, pastor)
Sunday: Sunday school, 10 a.m. Sun. school, 10:30 a.m. National Guard Armory, visitors welcome.
FIRST BAPTIST CHURCH
(Harry Cowles, pastor)
Sunday: Church school, 9:45 a.m. children's church, 11 youth Bible study, 7:30 p.m.
Tuesday: Church choir night, 7 p.m.
Wednesday: Choir practice, 7:30 p.m. Bible study, 8 p.m.
FIRST CHURCH OF CHRIST
Christian
Sunday: 8:30 a.m. 9:30 a.m. 11:30 a.m. 1:30 p.m. 3:30 p.m. 5:30 p.m. 7:30 p.m.
FIRST UNITED METHODIST CHURCH
(Kenneth Edmons, pastor)
Sunday: Worship with communion, 8:30 and 11 a.m. Senior High UMW, 4:30 p.m.
Wednesday: Junior and youth choir, 4 p.m. Bible choir, 5:30 p.m. Methodist Men polluck supper, 8:30 p.m.
GRACE BIBLE CHURCH
(Elton Schuler, pastor)
Sunday: Sunday school, 9:45 a.m. worship, 11 youth Bible study, 6 p.m. evening worship, 7:30 p.m.
Wednesday: Prayer meeting, 7:30 p.m. Bible study, 8 p.m.
For free bus transportation, call 375-2413.
GRACE LUTHERAN CHURCH
Missouri Synod
(Jack Schneider, assist pastor)
Thursday: Thanksgiving service, 9:30 a.m.
Saturday: No junior choir. Sunday school or confirmation class.
Sunday: Sunday school and Bible classes, 9:30 a.m., worship, 10:30 a.m.; Monday: Sunday school staff meeting, 7:30 p.m.
Tuesday: Church followers, Doris Meyer, 3:30 p.m. adult Bible class, 7:30 p.m.
Wednesday: "The Searchers," Tama Krosus and 7:30 p.m. "The Berens," Carol Schmidt, 1:30, Walt her League.
IMMANUEL LUTHERAN CHURCH
Missouri Synod
(A. W. Wade, pastor)
Sunday: Sunday school, 9:30 a.m. worship, 10:30 p.m.
REDEEMER LUTHERAN CHURCH
(S. K. deFreese, pastor)
Saturday: Ninth grade confirmation, 10 a.m., Pro Do, 10 p.m.
Sunday: Sunday school, 9:30 a.m. fellowship forum and Sunday school, 10:30 a.m. 11:30 a.m. 1:30 p.m. 3:30 p.m. 5:30 p.m. 7:30 p.m. 9:30 a.m.
ST. ANSELME'S EPISCOPAL CHURCH
623 East Tenth Street
(James M. Barnett, pastor)
Sunday: Morning prayer, 10:30 a.m.
ST. MARY'S CATHOLIC CHURCH
(Thomas McDermott, pastor)
Sunday: Mass, 9 a.m., 10:30 a.m., 12:15 p.m., 5 p.m., 7:30 p.m., 9:30 p.m.
Monday: Mass, 8:30 a.m.; Inquiry

Sparkling Gift Ideas From
Wayne Book Store
AND OFFICE PRODUCTS
Phone 375-3295 219 Main

FACTS IN FIVE...the game of knowledge
From 3M
See Us For 3M's Complete Line of Games for Adults or Family!
Check Our Nice Selection Of World Famous Hummel Figurines!
Pick Up Your Christmas Bucks Tickets Here!

COUPON Wayne Book Store **COUPON**
We will imprint your name on any Prince Gardner billfold purchased in our store FOR 5 NDC POINTS Effective Thru December 7

COUPON Wayne Book Store **COUPON**
10% OFF with coupon on all boxed CHRISTMAS CARDS Effective Thru December 7

COUPON Wayne Book Store **COUPON**
\$5.00 OFF with coupon On Reg. \$79.95 VICTOR ADDING MACHINE Effective Thru December 7

COUPON Wayne Book Store **COUPON**
We will imprint 1 line on boxed Christmas cards purchased at our store FOR 5 NDC POINTS Effective Thru December 7



New Arrivals

BROWN—Mr. and Mrs. Mabel Brown, Wakefield, a daughter Heather, Allison, 8 lbs. 2 oz., Nov. 23, Wakefield Hospital.
MAHLER—Mr. and Mrs. John Mahler, Wakefield, a son, Jeremy, 8 lbs. 9 oz., Nov. 27, Wakefield Hospital.
MCCOY—Mr. and Mrs. Richard McCoy, Waterbury, a daughter, Rebecca Denise, 5 lbs. 6 1/2 oz., Nov. 21, Wakefield Hospital.
BAHDE—Mr. and Mrs. Patrick Bahde, Wayne, a daughter, Kimberly Jean, 5 lbs. 10 oz., Nov. 23, Wayne Hospital.
PANTOS—Mr. and Mrs. Alex Pantos, Waterbury, a son, Joel Williams, 7 lbs. 7 oz., Nov. 21, Wayne Hospital.
PETERS—Mr. and Mrs. Charles Peters, Dwan, a daughter, Amy Lynn, 7 lbs. 10 1/2 oz., Nov. 20, Wayne Hospital. Grandparents are Mr. and Mrs. Don Peters, Dixon, and Mr. and Mrs. Frances Mattes, Waterbury. Great grandparents are Mr. and Mrs. George Eckhoff, Wakefield, and Mrs. Catherine Peters, Seattle. Was.
TRUBE—Mr. and Mrs. Bruce Trube, Crete, a son, Corey Allen, 7 lbs. 10 1/2 oz., Nov. 18, Grandparents are Mr. and Mrs. Al and Mrs. Allen Trube, Allen. Great grandparents are Mrs. Rose Sorenson, Wakefield, and Mr. and Mrs. Basil Trube, Allen.

Shower Given Nov. 16 For Marilyn Mackey

A miscellaneous bridal shower honoring Marilyn Mackey of Laurel was held Nov. 16 at the Laurel Immanuel Lutheran Church.
Sixty guests were present from Bancroft, Belden, Wayne, Harrington, Crofton, Allen, Dixon, Concord and Waterbury. Decorations were in shades of blue. A reading was given by Mrs. Clayton Schroeder of Laurel. Mrs. Effie Mackey of Bancroft, grandmother of the bride-elect, poured.
Hostesses were Mrs. Francis Mattes of Waterbury, Mrs. Jack Erard of Concord, Mrs. Don Peters and Mrs. Larry Lubberstedt, both of Dixon, and Mrs. Dean Pipgett, Mrs. Clayton Schroeder, Mrs. Harvey Rastede, Mrs. Morris Ebmeier, Mrs. Ben Ebmeier, Mrs. Arnold Ebmeier, Mrs. Glimmer Stark, Mrs. Armin Stark, Mrs. Bob Buss, Mrs. Ed Gadenken and Mrs. Larry Maxon all of Laurel.

Miss Mackey, daughter of Mr. and Mrs. Jerome Mackey of Laurel, is the daughter of Mr. and Mrs. Othmar Steffen of Crofton, will be married Dec. 7 at the Laurel Immanuel Lutheran Church.

Christmas Dance

Town Twirlers Square Dancers will hold their Christmas dance at the Laurel city auditorium Sunday evening. The dance will get underway at 8:30 p.m. Caller is Dennis Kelly.

Thanksgiving Specials

That Are Extra Special!

CANADIAN MIST Quart

VODKA Quart

MOGEN DAVID WINE

YAGO SAN' GRIA

RUM Quart

We Also Give Quantity Discounts!

Special Discounts For Everyone
Having Fireman Ball Tickets.

ALL SPECIALS GOOD THRU SAT., NOV., 29th

D & K Bottle Shop

Wayne, Nebr. Phone 375-3550

Stores Will Be Open
Friday Night, November 29th.

November Bride Feted

Bride-elect Susan Klug, daughter of Mr. and Mrs. Merlin Klug of Hoskins, was honored recently with three bridal courties. Miss Klug and Kent Luebe, son of Mr. and Mrs. Orville Luebe of Pierce, will be married Saturday.

Courtesy is Given
At Belden Church
A miscellaneous shower honoring Luann Rhode of Randolph was held Friday night in the Belden Presbyterian Church parlors.

Serving on the committee were Mrs. Laurence Fuchs, Mrs. Meryle Kavanaugh, Mrs. Lloyd Heath, Mrs. Jerry Falter, Mrs. Clarence Kruger, Mrs. Fred Pflanz, Mrs. Delbert Kruger, Mrs. Chuck Hintz, Mrs. Byron McLain, Mrs. Harold Huelgel, Mrs. Charles Arduser, Mrs. Elert Jacobsen, Mrs. Dick Slapelman, Mrs. Carl Bring, Mrs. Darrell Hesse, Mrs. Robert Wobbenhorst, Mrs. Bill Brandow, Mrs. Darrel Neese, Mrs. Charles Hintz, Mrs. Pete Peder sen, Mrs. Jim Kavanaugh and Mrs. Manley Sutton.

Guests were the bride-elect's friends and former classmates. Thirty guests attended a shower in the Bill Sparleder home at Randolph Nov. 3. Towns represented were Pierce, Magnet, Oakdale, Randolph, Norfolk and Hoskins.

Games served for entertainment with prizes presented the honoree. Mary Grosserode and Dianne Luebe assisted the bride with gifts.

Manhattan Island

Is Lesson at Club

The island of Manhattan was the lesson topic when 13 members of the Minerva Club met Monday afternoon with Mrs. Carl Lentz.

Mrs. Verna Rees told members that Manhattan Island, the most densely populated island in the world, covers 31 square miles and was purchased from the Indians for \$24 during the early 1600's. George Washington was inaugurated on Manhattan Island while it was a temporary capital of the United States for five years during the early 1800's.

The group will hold their Dec. 9 meeting with Mrs. Minnie Rice for a 1 p.m. luncheon. Co-hostess is Mrs. Joe Corbit.



Planning December Rites

Mr. and Mrs. Ronald A. Murphy of Papillion announce the engagement and approaching marriage of their daughter, Brenda Murphy, to John J. Dorcey. Dorcey, son of Mr. and Mrs. Felix Dorcey of Wayne, is a district manager for AC-DeCo Division of General Motors at Wausau, Wisc. Plans are underway for a Dec. 28 wedding at St. Mary's Catholic Church in Bellevue.

Fete Held For Recent Bride

Mrs. Marcus Rotranel was honored Tuesday evening, Nov. 19, with a miscellaneous bridal shower held for her at the Wakefield Evangelical Covenant Church. Devotions were given by Mrs. Iris Larson and games served for entertainment.

Serving were Edna Holm, Mrs. Albert Anderson, Mrs. Dick Everingham, Mrs. Bertil Larson, Mrs. Malcolm Jensen and Mrs. Francis Muller.

The bride is the former Susan Gustafson, daughter of Mr. and Mrs. Marlow Gustafson of Wakefield. The couple was wed Nov. 1 at Sioux City.

Bridal Shower

Held at Hoskins

A miscellaneous shower honoring recent bride Mrs. Rick Bussy of Norfolk, was held in the Mrs. James Robinson home, Hoskins, Nov. 20.

Twenty guests attended from Pierce, Stanton, Norfolk, Winside, Randolph and Hoskins. Decorations were in blue and white. Name tags served for entertainment with prizes going to the honoree.

Hostesses were Mrs. Lloyd Behmer of Winside and Mrs. Robinson.

The bride is the former Kathy Anderson, daughter of Mr. and Mrs. Irving Anderson of Hoskins.

Winside Couple Observe 60th

Mr. and Mrs. O. R. Roland of Winside, who have been married 60 years, marked their wedding anniversary Sunday at the Wayne Care Centre. Approximately 40 friends and relatives from Chester, Wayne and Winside attended.

Rolands were married Nov. 25, 1914 at Pierce and spent most of their married life in the Winside area, moving into Winside in 1940. They have two sons, Ray of Chester and Glen of Washington, and two grandchildren and three great grandchildren.

Hospital Notes

WAYNE

ADMITTED: Mrs. Charles Peters, Dixon; Mrs. Alex Pantos, Wisner; Frances Johnson, Wayne; Donald Gutovsen, Winside; Mrs. Patrick Bahde, Wayne.

DISMISSED: Einoor Cook, Carroll; Mrs. William Sachau and daughter, Allen; Mrs. Ed Coney, Pilsner; Yale Kessler, Wayne; Mrs. Alex Pantos and son, Wisner; Mrs. Charles Peters and daughter, Dixon.

WAKEFIELD

ADMITTED: Paul Lessman, Wakefield; Charles Keyser, Wakefield; Mrs. Mary Donna Ponca, Jody Alvin, Wakefield; Mrs. Barbara Mahler, Waterbury; Mrs. Margaret McCoy, Waterbury; Mrs. Carolyn Brown, Wakefield; Mrs. Ann Boltger, Emerson; Mrs. Leona Grederickson, Pender.

DISMISSED: Lawrence Barg, Carroll; Mrs. Nadine Borg, Concord; Mrs. Francis Erlandson, Wakefield; Mrs. Edna Brownell, Wakefield; Charles Keyser, Wakefield; Melvin Navrak, South Sioux City; Chris Lamp, Emerson; Charlotte Ekeröth, Wakefield; Jody Alvin, Wakefield; Mrs. Ann Boltger, Emerson.

Bequest

(Continued from page 1)
High School, she graduated from Wayne State in 1945 and received her master of arts degree from Northwestern University of Chicago. Forty five years of her life were spent in the field of education. During her career Miss Buettner taught at all levels, kindergarten through college, and for a time served as principal in a Lincolnwood, Ill., school. Several summers she spent at the University of Nebraska doing demonstration teaching.

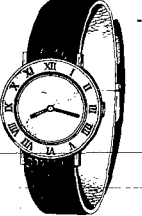
Her first position was at District 40, west of Madison. Subsequently she taught at Battle Creek, Newman Grove, Edgar, Beatrice and Grand Island, all in Nebraska; in Oregon and at Wilmette and Lincolnwood, Ill.



It's Not Too Early
To Think About
Christmas!

— WATCHES —

Bulova
Accutron
Caravelle
Wylor
Signal



B. David
Jewelry
Princess
and
Tru-Blu
Diamond
Engagement,
Wedding and
Dinner Rings



Kremontz
MEN'S & LADIES'
Jewelry
Charms &
Charm Bracelets



Trifari Jewelry
Necklaces
Bracelets
Earrings

Princess AND
Prince Gardner
Billfolds

Music Boxes
Pen & Pencil Sets
Desk Sets
Stone-Set Rings
Clocks

Gifts of All Kinds!

Dale's
Jewelry

211 Main - Wayne

Stores Will Be Open
Friday Night, November 29th.



Winter Coat Clearance

15% to 45% off

Orig. \$45 Orig. \$50 Orig. \$125-\$140

\$29 \$39 \$79

Yes—now when it's cold—and you're watching every penny, McDonald's gives you savings up to \$61! A fabulous group of fur trims, fake furs, fake leathers, genuine sueded pigskins, wool meltons, and quilted nylons, all from regular stock, in pantcoat, full and maxi lengths! Whites, navy, camel, red, plaids and more in the group, sizes 8-16. Come early to find your favorite!

after-McDonald's Thanksgiving SALE



Save \$2 to \$6!
Men's Dress Shirts

6.99 and 8.99

Stock up on famous brand long sleeve shirts for him! All perma-press in knits and wovens, solids and patterns. Sizes—14½-17. Reg. \$9-\$12. 6.99; reg. \$12-\$15. 8.99



Save \$10 to \$20!

MENS

SPORTCOATS

Values to \$40 \$29.90

Values to \$65 \$44.90

WOMEN'S

Pant Suit Clearance

Values to \$24 \$19.90

Values to \$34 \$24.90

Values to \$46... \$37.90

Famous name polyester doubleknit pantsuits in wanted styles. Solids and jacquards for yourself and gifts.



SPORTSWEAR CLEARANCE!

Choose from over 1000 pieces of Jrs., Misses Coordinates and Separates.

TOPS

Values to \$10

\$7.97

Values to \$15

\$9.97

Values to \$18

\$14.97

BOTTOMS

Pants & Skirts

Values to \$15

\$8.97

Values to \$21

\$14.97

Jackets/Vests

Values to \$19

\$8.97

Values to \$28 \$14.97

Famous brand pants, skirts, shells and jackets in easy-care knits! Not all colors and styles in every size—so shop early for best choice!

HOURS: Daily 9:30 - 5:30 — Tues/Fri - 9:30 - 9:00 Sun. 1 - 5



CHARLES STELLING, director of informational services at WSC, works at evaluating the collection of books donated to the college library by the late Hilda C. Buettner.

Now 1-1, WS Cagers Look to Mount Marty

Wayne State cagers have a seven-day gap between games this week to regroup for the next one, against Mount Marty Saturday night at Yankton.

Last Saturday the Wildcats met more than their match in a fired-up Briar Cliff quint determined to beat Wayne for the first time in seven games. The Chargers came off a 34-38 half-time deficit to win by 86-72.

The difference appeared to be Briar Cliff's subtle hustle on defense, which handily aug-

mented hot shooting through the second half. Time after time Charger defense intercepted passes or punched the ball out of Wildcat hands from behind.

By contact, first-half action went nip and tuck. Briar Cliff started the scoring, and Wayne matched it. That's the way it went — Briar Cliff ahead by two points, Wayne tying, et cetera, with a dozen tie scores until 2 1/2 minutes before intermission. Then Wayne pulled ahead by four points.

The second half started out similarly, but after a John Redmond three-point play put the Cats up by 47-44, the tempo changed. Briar Cliff began its

overhaul five minutes into the half, and 10 minutes later the Chargers enjoyed a 78-58 lead.

Compared with Wayne's 97-81 defeat of Northwestern last Tuesday, when the Wildcats hit 50 per cent from the field and 70 per cent from the free throw line, Wayne found the Sioux City auditorium baskets hard to hit. Shooting percentages dropped to 44 and 48.

Only two Cats scored big, Rick Anderson with 20 and Charlie Henderson with 16. Briar Cliff got 23 points from Ed Warren — 17 of them peppering the late rally — and 12 or more from three points.

Redmond's drawing three

fools in less than four minutes may have hurt Wayne efforts. The handicap curbed his typical changing type of play, and he fouled out with 7:27 left in the second half.

Wayne's junior varsity bombed the BC reserves 95-67 in the preliminary, led by Andy Adams added 20, Mark Riewer 16 and Dave Pfaltzgraf 13.

Coach Bill Sharpe has the much the same as Briar Cliff, says coach Jim Seward after scouting the Yankton team. They play free lance work on the fast break, try to make the toe play their game, Seward explains.

Inside Shooting May Boost Devils' Game

The biggest change Wayne High fans will notice about this year's basketball team won't be the new faces up from junior varsity. It will be more-and perhaps better-inside shooting.

Coach Bill Sharpe has the height in the front court that might turn Wayne's outside shooting game of a year ago back to the inside.

"We'll look inside more than we did last year, but we'll still have good outside shooting," Sharpe pointed out. "We won't have to rely on the outside as much."

Although all three seem like possible starters, Sharpe is quick to point out he has seven seniors and nine juniors and sophomores vying for positions.

The edge the seniors have is a vital one — experience. Besides Keating, Froehlich and Emry, Sharpe has Rick Mitchell, Earle Overin, Mike Meyer and Marty Hansen. All have shots at starting.

Hansen, the only other returning starter, appears to be a solid choice to retain his guard position. The 5-10 three-year veteran may give Sharpe the outside

edge plus the ability to move the ball quickly down the court.

"We'll try to run the ball when we can. I don't know if we can do as well as last year since we'll be minus the speed," Sharpe said.

Wayne will miss the quickness of graduates Rod Bigelow and Scott Ehlers, two guards who gave the Devils quick shots from the outside that forced many opponents to open up their defense.

Hansen, Sharpe is looking to the juniors to help close the gap for the quick outside shots — Rob Mitchell, Paul Mallette, Dave

Hix and Monte Lowe have reserve varsity experience to help them blend with Sharpe's game.

Wayne's schedule: December — 6 at Blair, 13 at South Sioux City, 14 Columbus Lakeview, 17 at Laurel, 20 at Wayne, 23 at Kearney, 24 at Wayne State holiday tournament; January — 10 at Madison, 17 Stanton, 18 at Bloomfield, 24 Neligh, 31 at Pierce; February — 1 Schuyler, 3-4-4-7 West Husker tournament at Wakefield, 11 at Randolph, 14 Creighton, 21 at Tekamah; February 25 Hartington Cedar Catholic.



HAVING TROUBLE... GETTING AUTO INSURANCE?

Too young or too old?
High performance or sports car?

Let me help. I have insurance for all drivers. And I'd like to insure your car.

YOUR AMERICAN FAMILY GROUP AGENT
A MAN FOR ALL DRIVERS

BILL WOEHLER
Woehler Trailer Court
Phone 375-1310
Wayne, Nebraska

AMERICAN FAMILY INSURANCE
AUTO HOME HEALTH LIFE
AMERICAN STANDARD INSURANCE CO.
Member
American Family Insurance Group
Madison, Wisconsin 53701



BRIAR CLIFF'S defensive action in recovering loose balls like this one helped shackle Wayne State, 86-72, Saturday night.

WANTED RAW FURS

Good demand for Prime Raccoon
Muskrat - Fox - Coyote - Mink

BRING IN YOUR CATCH FOR TOP PRICES

STURGES CO.
2630 N St., South Omaha, Nebr.
DEALERS
Hides - Furs - Wool - Horse Hair

Bird Stories Vary

Nebraska's pheasant hunters apparently had two different stories to tell about their success on opening weekend, say Game and Parks Commission biologists.

Hunters contacted by conservation officers complained of rather poor success, but when more complete data from check stations was compiled, the season opener showed up much better.

In fact, hunters fared about 20 per cent better than last year on the statewide average. Only the panhandle experienced a decline in opening day success. In Northeast Nebraska, success was up 37 per cent.

SPORTS

Local, Area Shooters Win 22 Turkeys

Local and area shooters won a total of 22 dressed turkeys in the Wayne Izaak Walton League's pre-Thanksgiving turkey shoot Sunday at the club's shooting range at the municipal airport east of Wayne.

Big winner in the shooting competition was Randy Ellis of Allen, winner of six turkeys in the blue rock shoot.

Winning a pair of turkeys each in the blue rock shoot were Dick DeNaeyer of Wayne and another Allen shooter, Sam Knepper.

Winning one turkey each in the competition were William "Skip" Kinslow, Albert Anderson, Paul Koptin and Lynn Jeffrey, all of Wayne.

Bill Wilson, another Wayne shooter, won two turkeys in the rifle shoot, while Marvin Dranska of Wayne and Allen's Knepper won a turkey each.

Wayne's Harry Lesberg won two turkeys in the still shotgun shoot, while two other Wayne shooters, Lynn Jeffrey and Le Roy Barber, won one each.

Enjoy the Holiday Season... But make sure your car is ready for the winter months ahead!

SKELLY Skelly Supreme Motor Oil • Skelly Tagolene Motor Oil • Keolane Gasoline

Batteries for All Your Needs! Passenger Car, Farm, Truck

SERVICE

- Tune-ups • Wheel Balancing • Complete Brake Service
- Specialized Radiator Repair • Wheel Alignment • Lubrication
- Free Pick Up and Delivery.

We Are An Authorized Motor Vehicle Inspection Station

GOODYEAR TIRES

Passenger Car - Pickup - Farm - Truck

More People Ride on Goodyear Tires Than on Any Other Kind!

(Nebraska Motor Vehicle Inspection Standards Require At Least 7/32" of Tread on Your Tires.)

M & S OIL CO.

71h and Main Wayne Ph. 375-1830

Don't Miss The **BIG** Carpet and Furniture

Stock Reduction SALE

— AT —

FINLEY'S Home Decorating
In Laurel, Nebraska

<p>CARPET IN STOCK</p> <p>HIGH LOW NYLON ON RUBBER Reg. \$7⁵⁰ (2 colors) \$4²⁵ sq. yd.</p> <p>HIGH LOW SHAG Reg. \$12⁵⁰ (6 colors) \$8⁹⁵ sq. yd.</p> <p>NYLON SHAG ON RUBBER Reg. \$7⁹⁵ (4 colors) \$4⁹⁵ sq. yd.</p> <p>See Roll End Specials!</p> <p>NYLON PLUSH Reg. \$8²⁵ (2 colors) \$5⁹⁵ sq. yd.</p> <p>KODEL GREEN SHAG Reg. \$9⁹⁵ \$5⁹⁵ sq. yd.</p> <p>KITCHEN CARPET Reg. \$7⁹⁵ (3 colors tweed) \$4²⁵ sq. yd.</p>	<p>COCKTAIL TABLES (2 left) \$39⁹⁵</p> <p>1 ROCKER Reg. \$95⁹⁵ \$69⁹⁵</p> <p>1 ROCKER Reg. \$145⁹⁵ \$99⁹⁵</p>	<p>USED DANISH MODERN GREEN VELVET 3 pcs. \$125⁰⁰</p> <p>1 ORANGE FUR ROCKER \$69⁰⁰</p> <p>2 PATCHWORK ROCKERS Reg. \$109⁹⁵ \$79⁹⁵</p> <p>4 BLACK VINYL GAME CHAIRS Reg. \$71²⁷ \$44⁹⁵</p> <p>MANY OTHER CHAIRS UP TO 1/2 OFF</p> <p>1 WHITE COUCH Reg. \$475⁰⁰ \$295⁰⁰</p> <p>2 GREEN & WHITE VELVET COUCHES Reg. \$647⁹⁵ each \$395⁰⁰ each</p> <p>2 PC. BLACK VINYL COUCH with recliner Reg. \$654⁹⁵ \$395⁰⁰</p> <p>1 HYDE-A-BED Reg. \$408⁰⁰ \$269⁰⁰</p> <p>1 — 3-PCS. BLUE VELVET (in window) \$747⁹⁵ \$525⁰⁰</p> <p>1 — 5-pc. WHITE & GREEN French Provincial 1 - Couch 2 - Chairs 2 - Tables Reg. \$1950 \$995⁰⁰</p>
---	--	--

EVERYTHING IN OUR STORE PRICED TO GO!

30 - 75% OFF

Sale Starts Friday, Nov. 29th
Thru Tuesday, Dec. 24th!

PRICED TO SELL

ORIGINAL HAND PAINTED OIL PAINTINGS
In Beautiful Wood Frames

PRICED TO SELL

FINLEY'S Home Decorating

Phone 256-3610 Laurel, Nebraska

Permalux & Griffaw
CUSTOM MADE COUCHES

STOCK ITEMS ONLY **30% OFF**

30% OFF

Devil Wrestlers Reversing Pattern

In past years, Wayne High's wrestling team has been noted for being strong in heavier weights. This year the Blue Devils are reversing that pattern.

Wayne grapplers will be strong in the lower division, with state contenders vying for the 105 and 119-pound positions.

Junior Ken Daniels, who went to state last year at 112, might move up to 119 while senior Randy Surber, '98 last year, moves up to 105. "Randy didn't go to state last year," said coach Dan Koenig, "but he was only one-point away from making the trip." Koenig, in his eighth year at

the helm, isn't relying on those two veterans alone to win duals this year. His hopes of strong low weight classes are strengthened by reserve power plus other veterans.

Joe Teeler and Byron Wacker appear to have shots at 112 pounds if Daniels goes to 119. Otherwise, either have equal shots at the 119 level, the coach pointed out.

Presently, Koenig has three trying out for 98-pound class—a position that often has been empty in the past. Brothers Jeff and Jeremy Edmonds will be competing in that division along with Keith Echtenkamp. All are freshmen.

Senior veterans Les Thompson and Alan Ekberg will provide some experience at the middle weights. Ekberg, at 126, and Thompson, at 138, are good wrestlers, Koenig said, in fact, Thompson probably is the quickest wrestler on the team, Koenig added.

Looking at the 155-pound division, Koenig labels senior Mike Hank as a "physically strong" wrestler who has had a couple of years reserve experience. "He is a strong choice for that weight class," Koenig pointed out.

Another strong wrestler is junior Larry Creighton. Although this is his first year out, Koenig figures Creighton is a

good candidate for the 166-pound division.

Unlike previous seasons, the Devils won't have a heavy-weight wrestler, senior Greg Godsey, weights 185 pounds. Regardless of the weight difference, Koenig said he'll have someone ready to take the position when the season starts.

Wayne's schedule: December—at Blair Invitational, 9 at Randolph, 12 Blair, 19 at South Sioux City, 21 Wahoo Invitational; January—4 Tekamah-Herman Invitational, 9 at Wisner-Pilger, 13 Neligh, 17 at Albion, 23 Tekamah-Herman, 27 Wakefield; February—at Albion Invitational, 4 Schuyler, 8 Husker Conference tournament at West Point.

3 AH Students Win Honors at Shooting Contest

Three Allen High students came home with third, fourth and fifth place honors following a rifle shoot at Sioux City on Wednesday last week.

Sophomore Brad Chase came in third, freshman Todd Ellis placed fourth and junior Shawn Fingersh finished fifth in the meet, the first contest entered by the Allen High rifle club.

Slightly more than 50 shooters competed in the contest, said Allen High club sponsor Noelyn "Butch" Isom.

Also competing in the shooting were Jeff Isom, Mark Koch, Richard Stewart, Gary Brownell and Steve Lunz.

Allen's team will next compete in a shooting contest at Sioux City on Dec. 18, with the top five shooters selected to take part.

Mat Hopes High at WS

Marion Haeyer, second year head wrestling coach at Wayne State, expects his squad to do well this year despite having a very competitive schedule.

Assisting Haeyer will be former Wayne State wrestler Ron Coles. Coles was chosen by his 1973-74 teammates as the most valuable wrestler while placing sixth in the national tournament.

Haeyer and Coles will be working to uphold the winning tradition of Wildcat wrestling. After 13 years of competition, the won-loss dual record for Wayne stands at 103 wins, 43 losses, and 3 ties.

The Cats have won 9 of 11 Nebraska College Conference championships and placed second in the other two.

Co-captain Jim Meyer is returning. He did his high school wrestling here in Wayne. Meyer will compete at 126 lbs. and will be hard pressed to improve on his 25-3-1 record of last year. The other co-captain will be George Risack, wrestling at 177 lbs. He also is a senior and calls Sterling, Ill. home.

Steve Ellis and Brooks Widner will be in the battle for the 118 slot. Ellis is a junior from Spencer, Ind., trying to recover from a kidney injury. Widner, also a junior, is from Chicago. At 126 along with Meyer is Craig Bellwege, a sophomore from St. Paul, Ne.

Jim Bovee, a junior from Valley, is at 134. Randy Humpal, a sophomore from Butte, will be wrestling at 150. A junior from Lafayette, Ind., Herb Harris will be vying at 158, although he is ineligible for the first semester.

At 190 are Mike Riedman, a junior, and senior Fred Spale. Riedman is out of Omaha and Spale from Schuyler, Ne.

Expected contenders for starting positions are Dave Kelly, sophomore heavyweight from Otterbein, Indiana; Kevin Kane, senior heavyweight out of Clinton, Ia.; Morrie Milldrum, 158 lbs., sophomore transfer from "Sioux City"; Jon Riedman, junior 142 pounder from Chicago; Gary Krajcick, 177 sophomore from Gretna, Ne.; Ed Travers, 190 senior from Waukegan, Illinois.

A fine crop of incoming freshmen will make the veterans work for their jobs. They include Mark Ellis brother of Steve, and a strong contender at 112, Al Koski, heavyweight; Chuck Covey, heavyweight; Lyle Klug, 167; Arnie Siefken, 142; Jim Kahn, 150; Gary Klass, 158; Bob Buck, 142; Chuck Brockman, heavyweight.

Said by Haeyer to be possible national contenders are Meyer, Humpal, Milldrum, and Riedman.

Three meets are scheduled before Christmas vacation: A double dual here with Morningstar and Dakota State, Wednesday, Dec. 4; the University of Nebraska at Omaha tournament, Dec. 7; and the Central Missouri State tournament Dec. 14.

Worth noting: one team competing in the UNO tourney is Iowa State University, frequently a NCAA national champion.

Sportsbeat

By Bob Bartlett



WHAT PRICE will Wayne State have to pay to fund more athletic programs for women in the future? And where are the funds going to come from?

Those are some of the questions confronting WS athletic director LeRoy Simpson, who is faced with expanding women's athletics or losing federal funds that help support the college. Under a new federal law, Title IX, all high schools or colleges which receive federal assistance have to provide equal athletic opportunities for women or lose federal funds allotted them.

The figures still are unknown, but the best guess is that additional financial support of women's athletics will come from the men's athletic budget.

The college has only three sources for money to support expansion of women's athletics: the academic budget, increased taxes or the present men's athletic funding.

"If (funding the expansion of women's sports) means that we're going to have to reshuffle something," said Simpson in an article written by Dave Moritz in last week's college newspaper.

Simpson went on to say the funding will involve re-evaluating the present men's athletic programs. Presently, WS's athletic program allocates \$5,000 to women and about \$44,000 to men, according to the article.

C. J. Willoughby, one of two WS women's coaches, pointed out that the increase in funding won't come overnight. "The college has until 1979 to line

up the program budgets," Miss Willoughby said.

The type of programs Miss Willoughby is referring to are the additions of tennis, track, golf and swimming to the present three-sport slate of basketball, volleyball and softball.

Women's track and tennis are scheduled to start in the 1975-76 school year, she said, but track depends on the college rebuilding its present facility. The board of governors of the state colleges has recommended to the legislature a \$60,000 improvement for an all-weather track.

Hopefully, women's golf and swimming will be offered the following year, Willoughby pointed out.

In the past, women athletes have had to raise most of the funds to support their programs by selling candy and beverages during men's home games. The funds help to pay for food and transportation to away games, but the money didn't cover cost of uniforms. "That came out of the girls' pockets, Willoughby said.

But things have changed in the past five years, she went on. The college is now paying for transportation, referees and the like "and each year it is getting better."

Willoughby figures the addition of more women's athletics can be a plus for the college. "More students are likely to attend Wayne if they know there are a variety of women's sports," she pointed out.

The college's reputation in women's sports already has proven a strong point in attracting more girl athletes, she said. "When students read about WS ranking among the top teams in the country, they naturally become interested," she said, referring to the college's softball team which played in the College World Series this spring.

If the college expands the present three-sport program for women, chances are the coaching staff of Mrs. Bernice Fullton (volleyball) and Willoughby basketball, softball will have to be expanded. "It would be pretty hard for both of us to take over coaching other sports with our present load," Willoughby said.

One way the college might cut down the expense of additional women's sports is to have men and women basketball teams travel together. "I think if inflation continues, this combination of men and women teams traveling together will take effect across the nation," she said.

Area Hunters Bag Over 50 Deer This Season

More than 50 area hunters bagged deer during the nine-day firearm season in mid-November.

Wayne hunters fared the best with 13 reporting downing deer at Ponca State Park and two reporting at West Point. Twelve Wakefield hunters and 11 Allen hunters also reported success during the short season.

According to figures from the Game and Parks Commission check stations, Nebraska's 25,237 permit holders bagged 15,999 deer, 1,393 more than last

year when 60 per cent of the hunters were successful. This year 63 per cent of the hunters were successful.

No area hunters are listed from the Norfolk check point because names were unavailable.

Area hunters bagging deer and checking them in at Ponca and West Point:

WAYNE: Ludwig Thos, Henry Woodward, Harold Severs, Karl Otte, Richard Brown, Ken Ulecht, Keith Doerschner, Wayne Bates, Carol Wilters, Darrell

Doescher, Gaylin Woodward, Leon Lamp, Brad Pflueger, Todd Beiermann, Robert Jenkins.

ALLEN: Brad Chase, Pete Snyder, Craig Blohm, Doug Smith, Rick Chase, Jule Swanson, Ken Swanson, Ernest Swift, Howard Kimbell, Charles Wilson, Todd Koester.

DIXON: Steve Dieckler, David Dunn, Richard Abts, David Abts.

CONCORD: Harlan Woodward, Thaine Woodward, Van-

delwyn Hanson, Oscar Johnson, Robert Taylor.

WAKEFIELD: Dean Greve, Eugene Ery, Dan Gustafson, Jim Woodward, Melvin Mortenson, Carol Mortenson, Merle Schwarzen, Doug Schwarzen, Dean Salmon, Herman Addink, Charlene Schroeder, Ken Schroeder.

LAUREL: Seward Van Buskirk, James Hirschman, Clair Hirschman, Charles Hirschman, Mike Hirschman.

Congratulations
Ron Fillon and Karen Black
Winners of our Thanksgiving Turkeys!

**WE WILL BE CLOSED
THANKSGIVING DAY!**

Lil' Duffer
BURGER BARN

7th and MAIN WAYNE PH. 375-1900

WHAT HAVE WE GOT?
The Newest Most Modern Car Service Plant in Northeast Nebraska.

WHAT DO WE BELIEVE?
We Believe We Can Give Our Customers The Quickest and the Finest Car Service for Less Money Than Any Place Else Around. JUST GIVE US A TRY!

WHERE ARE WE AT?
We're Located Just West of Wayne on Highway 35. P.S. We Will Even Give You A Car To Drive While Yours is In The Shop.

IT'S ALL HAPPENING AT —
Coryell Auto Co.
Just West of Wayne on Highway 35

Brighten the Holiday Season with these

COUPON DAYS SPECIALS FROM

Swan-McLean
Clothing for men and young men
WAYNE

VAN HEUSEN DRESS SHIRTS Long or Short Sleeve \$2.00 OFF

\$5.00 OFF Any Acme, Dingo or Chipewa WESTERN, CASUAL OR WORK BOOTS

Men's & Boys' WINTER JACKETS ENTIRE STOCK 1/4 OFF

50% OFF ALL SUITS
In Stock!
GOOD SELECTION

SPORT COATS 25-30% OFF
Pick Up Your Christmas Bucks' Tickets Here!

CLIP & SAVE \$4.00 OFF OSH KOSH Insulated Coveralls (deep olive color)

CLIP & SAVE \$5.00 OFF ANY FREEMAN OR MANLY Dress or Sport Shoes

\$4.00 OFF ANY DOUBLE KNIT Dress or Casual PANTS

\$2.00 OFF Any Cotton Flannel Shirt Osh Kosh and Campus

\$1.00 OFF Any 3-Pak of Underwear T-Shirts, U-Shirts, Briefs, Boxers (Nationally Known Brand)

Make Sav-Mor Drug Your —

Christmas Gift Headquarters



max-MEN

THE MAN'S HAIRDRYER by Gillette

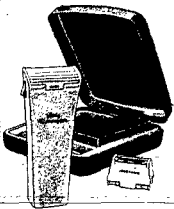


Now 650 watts for faster drying

2 grooming attachments

\$19⁹⁹

Introducing The New **LADY REMINGTON MS-160 Cord Shaver.**



Two heads are better than one.

A beautiful contour-shaped shaver featuring the two-headed shaving system... one head gentle enough for underarms, the other tough enough to give legs a close shave. Now with exclusive super-sharp replaceable blade feature and a built-in shaving light. Designed in lavender with a floral motif and packaged in a contemporary sapphire-blue transparent case. Includes a coupon good for free set of Replacement Blades.

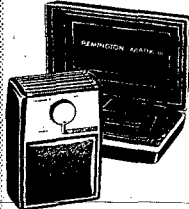
*22⁹⁵ Value

ONLY

\$19⁹⁵

SPERRY-REMINGTON ELECTRIC SHAVERS

The **REMINGTON MARK III Deluxe Cord Shaver.**



It's the deluxe cord shaver that makes the close shave comfortable.

This deluxe cord shaver gets more shots at your beard and fewer shots at your skin thanks to the new COMFORT HEAD SHAVING SYSTEM. With the Mark III you get close, comfortable shaves plus these great features: 4-position comfort dial, sideburn trimmer, replaceable blades, power clean setting. Comes in gift case with free set of Replacement Blades.

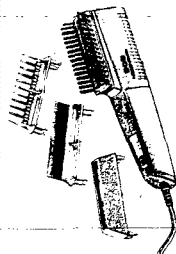
*38⁵⁰ Value

ONLY

\$31⁹⁵

SPERRY-REMINGTON ELECTRIC SHAVERS

Style for Men or Women



REMINGTON™ **600 Deluxe Hair Dryer for Men.**

- Fast drying and styling with 600 watts
- Concentrator spot-dries
- Hi-low drying/styling switch
- Brush and 2 comb attachments for styling
- Simulated leather travel case
- Thermostatically controlled

*23⁹⁵ Value

ONLY

\$21⁹⁵

SPERRY-REMINGTON PERSONAL CARE PRODUCTS



Receive Double National Dividend Checks On Items In This Ad

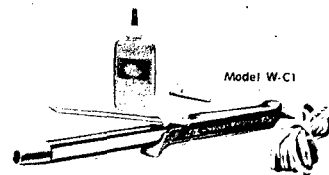
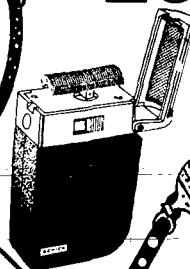
Effective November 21 thru November 24

Schick Model 300 Foil Screen Shaver

*32⁹⁵ Value

ONLY

\$26⁹⁵



Sunbeam "MIST-STICK" ELECTRIC CURLER/STYLER

ONLY

\$15⁹⁵



THE SCHICK HOT LATHER MACHINE

Refills available in regular, menthol, lemon & lime.

*19⁹⁵ Value

\$13⁹⁹



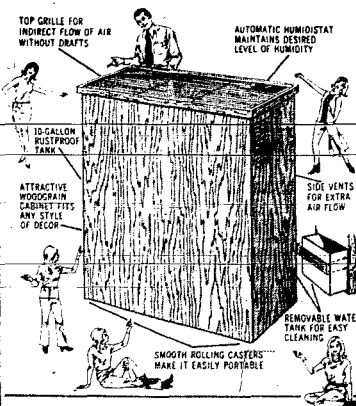
MR. COFFEE

Automatic Home Coffee Brewer

\$39⁹⁹

Model G-S M3

Add moisture to your home this winter!



NEW PRESTO Standard Humidifier Model 501

Does your skin feel dry? Is your furniture starting to split? Presto humidifiers help you solve your winter heating problems. Here's how:

- Big Humidity Output.** Gives you up to 12 gallons of moisture daily—enough to humidify the average 2- or 3-bedroom home.
- Automatic humidistat.** Just set the dial, and Presto maintains the desired level of humidity. The top-mounted humidistat can be easily seen and set without stooping or bending.
- Removable Water Tank.** The 10-gallon rust-proof tank makes the unit easy to fill, easy to clean.
- Portable.** Smooth-rolling casters make it simple to move to any part of the home.

GILLETTE HOT SHAVE SYSTEM

Reg. *21⁹⁵

\$18⁸⁸

PRELL SHAMPOO



11 oz.

Liquid Family Size

*1⁹⁵ Value

99c

BUY YOUR GIFTS WITH NDC'S

REDEEM AT SAV-MOR DRUG

Superstars

Dry and style your hair in a flash with professionally designed Superstars. 500 watts of power in an unbreakable case. Four-way temperature control, styling nozzle, professional balance. Full one-year guarantee. UL approved.

Super styles, super quick, with Superstars.



supermax HAIRDRYER/STYLER by Gillette

THE COMPLETE HAIRSTYLING SYSTEM

- NOW 650 WATTS FOR FASTER DRYING
- 5 STYLING ATTACHMENTS
- 2 SETTING POSITIONS

\$19⁹⁹

500 watt

\$13⁴⁹

\$59⁹⁵

Get \$100 WORTH OF Head & Shoulders COUPONS

BY MAIL when you buy HEAD & SHOULDERS. See our display for required certificate and complete details. Mail in by March 8, 1975.

\$1²⁹

COUPON SAV-MOR DRUG COUPON

SCOPE
Super Size - 24-oz.

\$2.05 Sugg. List **\$1¹⁹**

WITH THIS COUPON

Offer Expires 11-26-74
Good Only at Sav-Mor

Code KC25

COUPON SAV-MOR DRUG COUPON

SURE
ANTI PERSPIRANT

14-oz. Size **\$1⁶⁹**

WITH THIS COUPON

Offer Expires 11-26-74
Good Only at Sav-Mor

Code KC25

SAV-MOR DRUG

Stop at the Door and Park

Walgreen AGENCY

Stop at the Door and Park.

1022 MAIN

PHONE 375-1444

Guests Honor Mrs. C. Schroeder

Mr. and Mrs. Clarence Schroeder entertained members of the Birthday Club Thursday evening in honor of the hostess' birthday. Other guests were Clinton Rebers and Mrs. Lucille Asmus.

Card prizes were won by Mr. and Mrs. Ernest Machmiller, high, and Mrs. Clinton Reber and Erwin Ulrich, low.

The birthday cake was baked by Mrs. Ernest Machmiller.

Hoskins News

Mrs. Hans Asmus
Phone 363-4112

kins Garden Club met Thursday afternoon in the home of Mrs. Myron Walker. Mrs. Irene Tunink was a guest.

President Mrs. Bill Fenske told about the flower of the month, the chrysanthemum. The group sang the hostess' favorite song, "Come Ye Thankful People Come."

A poem entitled "Thanksgiving Prayer" was read by Mrs. Erwin Ulrich. Roll call was to bring an autumn leaf with a short prayer to be hung on a tree.

Mrs. Myron Walker gave the comprehensive on African violets and conducted two Thanksgiving contests. A poem, "The Ant and the Grasshopper," was read by Mrs. Bill Fenske and the lesson on poinsettias was given by Mrs. Carl Hinzman.

Plans were made for a 1 p.m. Christmas luncheon Dec. 19 in the George Wittler home.

Garden Club
Twelve members of the Hos-

Mrs. Bruggeman is Guest
Mrs. Elmer Peter entertained members of the Gel-To-Gether Card Club Thursday afternoon. Mrs. Gerald Bruggeman was a guest.

Pitch prizes were awarded to Mrs. Walter Strate, high, Mrs. Irene Fletcher, second high and Mrs. Vernon Behmer, low. Mrs. Bruggeman received the guest prize.

The Dec. 19 meeting will start with a 12:30 p.m. dinner at Prenger's in Norfolk, followed by cards and cookies or candy and gift exchange.

PTA Sponsors Party
PTA members sponsored a merchandise party Nov. 20 at the Hoskins Fire Hall. Mrs. Bev Gilmer of Norfolk was demonstrator. Everyone received a thank you gift.

Proceeds of \$20 will be donated to the Hoskins public grade school.

ZION LUTHERAN CHURCH
(Jordan Arft, pastor)
Thursday: Thanksgiving worship, 9 a.m.
Saturday: Saturday school, 9 a.m.
Sunday: Worship with communion, 9 a.m.; Sunday school,

10:15; Christmas program practice, 1:30 p.m.

HOSKINS UNITED METHODIST CHURCH
Harold Mitchell
Glenn Kennicott
Carol Roeltmer Brewer
Sunday: Church at worship, 9:30 a.m.; church at study, 10:30; congregational meeting, 3 p.m.
Wednesday: Esther Circle, church basement, 1 p.m. luncheon.

PEACE UNITED CHURCH OF CHRIST
(Dale Coakley, pastor)
Saturday: No Saturday school.
Sunday: Church, 10 a.m.; Sunday school, 11.

TRINITY LUTHERAN CHURCH
(Andrew Domsom, pastor)
Thursday: Thanksgiving service, 10:30 a.m.
Friday: Finance committee, 8 p.m.
Sunday: Worship at Faith in Wayne with communion, 8:45 a.m.; Sunday school, 10; worship at Trinity, 10:30 a.m.; Sunday school, 9:30.
Monday: Choirs, 7:30 p.m.
Tuesday: Adult information class.
Wednesday: Bible class at Faith, 8 p.m.

Fighters

(Continued from page 1)
a thief or burglar at work, Chase explained. This increases the possibility of successful daytime crimes and, coupled with the longer hours of darkness, intensifies the problem of preventing or controlling crime, he says.

Chase noted that opportunity plus desire equals crime, but Dixon County residents "can do a lot to decrease the opportunity for crimes to be committed in your neighborhood." All they have to do is ask for the information kit available through the county sheriff's office, he concluded.

Stores

(Continued from page 1)
opening night, Dec. 23, a \$500 prize will be awarded.

Tickets shoppers are now receiving are numbered so they can be used on the days those Christmas Bucks prizes will be awarded.

A list of 20 numbers will be drawn at random each of those days and the person holding the ticket closest to the top will win that day's prize. Holders of tickets will have until 8 p.m. to present their ticket to the Chamber of Commerce office.



MERLIN WRIGHT'S Thanksgiving message to Wayne Kiwanians at Monday's luncheon pointed out the need for everyone to look at themselves.

Wright: Be Thankful You Are You

Merlin Wright's Thanksgiving message to Wayne Kiwanians was simple: "Be thankful you are you."

"Man is what he thinks," Wright said during Monday's luncheon. "You never are any more than what you think," he emphasized.

Wright, one of four probation officers from Wayne serving a 12-county area in Northeast Nebraska, said, "I'm thankful for my job because it means accepting a world of reality. A world that needs changing."

Wright suggested that Thanksgiving is a good time to recognize self value and express your appreciation for your fellow man. Reflecting on some of your work, Wright pointed out that some people do not have a

clear picture of themselves, losing their self-identity. "In cases like these we try to help the person find himself so that he or she may reconstruct his life," Wright pointed out.

Using a calculator, tape recorder and camera for illustrations, Wright explained, "I can add all the things about you, record all your words and even take a picture of you, but I still wouldn't have the real you; it would only tell us about the

exterior person, not the real you," he added.

"You are you. There will never be another person like you," he pointed out.

Before Wright's talk, three members were presented membership pins for perfect attendance. Dick Manley received a 16 year pin, Harland Pankratz one for three years and Leon Meyer one for two years. Last week Dan Sherry was awarded a seven year membership pin.

Cars, Trucks Registered

WAYNE COUNTY CAR REGISTRATIONS	Wayne County
New	Leo Dietrich, Wakefield, Buick
	Gerald Hale, Carroll, Chev. Pickup
	1968
	Merlin M. Wright, Wayne, Chev. Van
	1964
C. Whitney Slabaugh, Jr. Lessee of	Leonard Schwanke, Wayne, Chev.
"Coryn" Auto Co., Wayne, Chev.	Neal J. McQuistan, Pender, Fd.
Joe Dorsey, Wayne, Chev. Pickup	1963
Farmers' Mutual Hail Insurance, Wayne, Chev.	Gary Hicke, Wayne, Dge. Trk
Edwin Strate, Hoskins, Chev.	1968
Diane Christensen, Wakefield, Ply.	Edith E. Evans, Wayne, Buick
1973	William G. Watson, Jr., Wayne, Fd. Pickup
Dale Johnson, Wayne, Chev. Pickup	1952
1972	David Swanson, Wayne, Chev.
Betty Jo Anderson, Winona, Fd.	Gerald Hix, Wayne, Fd. Pickup
1971	1956
Melvin Stuthman, Wayne, Ply.	Philip W. Gries, Wayne, Dge.
James L. Robinson, Hoskins, GMC Pickup	1950
1970	Vakoc Construction Co., Wayne, Chev. Pickup
Robert W. Dolata, Wayne, Cad.	
1969	
Warren L. Schultz, Wayne, Ply.	

V. Q. & A.

Q. I have an "RS" National Service Life Insurance Policy as a result of service during the Korean Conflict. Does the Veterans Administration pay dividends on this policy?

A. Not yet. However, beginning January 1, 1975, the VA will pay dividends on the anniversary dates of both "RS" and "W" prefixed policies, as authorized under Public Law 93-289 (May 1974).

PRE HOLIDAY CARPET SALE

Kitchen Prints
As low as **\$5.95**

Hi-Low Shags
Rubber & Jute
\$7.95

Rubber Backed Nylon Plush
\$4.95

Candy Stripe
Level Loop Nylon
\$3.95

Multi-Colored Shags
Rubber Backing
\$5.95

Mohawk's Dawn Fantasy Island Holiday
Reg. \$14.95
\$11.95

Outstanding VALUES

ROOM SIZE RUGS
AREA RUGS

ROLL ENDS	WAS	NOW	WAS	NOW	
12 x 11'3" Plush slate green jute back	\$163.06	\$105.00	12 x 9'5" Concert Scotchgard kitchen print	\$124.90	\$ 84.00
12 x 9'5" Kitchen print rubberback	\$112.35	\$ 54.00	12 x 16'4" Brand Plateau nylon HI-low	\$176.95	\$158.98
12 x 9'2" HI-Low shag rubberback	\$108.00	\$ 70.00	REMNANTS		
12 x 11'10" Brown-beige shag rubberback	\$ 93.15	\$ 70.00	12 x 7'8" Brown-Burnt orange shag rubberback	\$ 66.00	\$ 49.50
12 x 12'8" Short shag gold jute back	\$164.70	\$119.00	5'9" x 6' Shag brown-green-white, jute back	\$ 36.48	\$ 24.00
12 x 8'10" HI-low shag, off white, jute back	\$128.92	\$ 84.00	7'10" x 9'6" Gold kitchen rubberback	\$ 74.38	\$ 32.00
12 x 13'7" Red shag, jute back	\$201.97	\$144.00	7'2" x 8'3" Black-gold kitchen rubberback	\$ 56.47	\$ 30.00
12 x 8'10" Multi-colored shag stripe rubberback	\$ 70.07	\$ 60.00	8'6" x 8'3" Sculptured bronze-gold	\$ 62.60	\$ 28.00
12 x 8'6" Nylon Shag Casino Blue rubberback	\$ 85.30	\$ 65.00	12 x 7'8" Red print kitchen rubberback	\$ 50.60	\$ 41.00
12 x 11'2" Green Garden shadows jute back	\$118.34	\$ 75.00	12 x 5'2" Natural Charmer Gold shag	\$ 70.63	\$ 35.00
12 x 15' Short shag, red jute back	\$219.00	\$140.00	10 x 7'9" Cadon nylon sculptured gold	\$ 72.96	\$ 36.00
12 x 14' Shag blue, jute back	\$204.40	\$110.40	9'9" x 11' HI-low shag, green-gold	\$112.00	\$ 81.25
12 x 11' Brown tweed commercial rubberback	\$131.26	\$ 80.00	12 x 7'7" Kitchen gold-orange rubberback	\$ 60.00	\$ 44.00
12 x 9'8" Pink shag rubberback	\$ 75.96	\$ 65.00	15 x 6'3" Green Antron nylon	\$ 60.00	\$ 30.00
12 x 12'2" Yellow shag rubberback	\$101.14	\$ 60.00	10'0" x 7'10" Gold Len Del	\$ 44.55	\$ 35.25
12 x 15 Red acrylic plush rubberback	\$160.00	\$ 80.00	5'9" x 6' Spring Mesa	\$ 36.60	\$ 24.00
12 x 9'5" HI-low shag, candle glo	\$121.00	\$ 97.00	12 x 12 Green-white tweed	\$112.00	\$ 48.00
12 x 17'4" Blue plush rubberback	\$140.00	\$115.00			
12 x 13'4" Gold-green tak dye splash	\$216.00	\$126.00			

Friday - Saturday - Sunday Only!

ENTIRE STOCK
Dimity Delight
by Spring Mills

NOVELTY SHEETS

1/2 PRICE

TWIN FLAT - Reg. \$7.00 **\$3.50**
TWIN FITTED - Reg. \$7.00

DOUBLE FLAT - Reg. \$8.50 **\$4.25**
DOUBLE FITTED - Reg. \$8.50

QUEEN FLAT - Reg. \$11.50 **\$5.75**
QUEEN FITTED - Reg. \$11.50

CASES
42x36 - Reg. \$5.50 **\$2.75**

Matching DIMITY DELIGHT

Bath Towels (Reg \$3.50) - Hand Towel (Reg \$2.50) - Wash Cloth (Reg \$1.00)

A \$7.00 VALUE **\$4.97** SET

McDonald's

KING'S CARPETS

104 Main

375-2890

Wayne, Nebr.

Officers Named at Rebekah Lodge

Rebekah Lodge members met Friday evening in the Mrs. Minnie Anderson home. A Christmas cash gift will be sent to the home in York. Officers elected were: Mrs. Leonard Andersen, vice president; Mrs. Minnie Andersen, secretary; and Johanna Jensen, treasurer. Articles were read by Mrs. Leonard Andersen, Gladys Reicher and Mrs. Elmer Nielsen. Mrs. L. Andersen served. Plans were made for a Christmas party Dec. 13 in the Mrs. Andersen home.

Brownies Meet
Brownie Troop 167 met Nov. 20 in the home of their leader, Mrs. Donovan Leighton. Members answered roll call by telling what animal they liked best. An outdoor game was played prior to the business meeting. The group read from their Brownie books and made trays out of various foods. Treas. Kim Schluerer, scribe.

Winside News

Meel for Pinchle
GT Pinchle met Thursday afternoon in the Mrs. Meta Niemann home. Prizes were won by Mrs. Gottlieb Jaeger, high and Mrs. Cora Carr, low.

Senior Citizens
Winside Senior Citizens met Nov. 19 afternoon at the auditorium with 16 present. Cards provided entertainment. Mrs. Adolph Rohlf was collie chairman. A Christmas dinner has been planned for Dec. 3.

Meet in Willers Home
Three Four Bridge met Friday afternoon in the Louie Willers home. Mrs. C. O. Witt and Mrs. F. Gaebler were guests. Prizes were won by Mrs. Frank Weible, Mrs. Alvin Carlson and Mrs. C. O. Witt.

Sewing Circle
Sewing Circle of Trinity Lutheran Church women met Nov. 20 and Nov. 22 at the church to do quilting. There were 13 present.

Trinity Lutheran Church
(Paul Reimers, pastor)
Sunday: Sunday school, 9:30; worship, 10:30.
Tuesday: Sunday school teachers.

United Methodist
(James Scovill, pastor)
Sunday: Sunday school, 10; worship, 11.

ST. PAUL'S LUTHERAN CHURCH
(G. W. Gotberg, pastor)
Saturday: No Saturday school or youth choir.
Sunday: Sunday school and Bible classes, 9:30; worship, 10:30.
Wednesday: Ladies Aid and LWML, Christmas party.

Social Calendar
Tuesday, Dec. 3: American Legion Roy Reed Post 752, Legion Hall, 8 p.m.; Winside Senior Citizens pot-luck dinner, auditorium.
Wednesday, Dec. 4: Federated Woman's Club, city auditorium.

Guest Attends Meet
Center Circle met Thursday afternoon in the Roy Davis home with 13 members and a guest, Mrs. Warren Jacobsen, present. Roll call was "Hints From Heloise". Plans were made to hold a Christmas dinner at 12 p.m. Dec. 6 at Prengers. A grab bag gift exchange will be held. Mrs. Adolph Meyer presented

the lesson of making chenille flowers and chenille swans.

Honor Hostess
Seven-Birthday Club members gathered in the Clarence Apking home Friday afternoon to help the hostess celebrate her birthday. Cards provided entertainment and a co-operative lunch was served. a888

PUBLIC NOTICES

BECAUSE THE PEOPLE MUST KNOW

Every government official or board that handles public moneys, should publish at regular intervals an accounting of the moneys received and how each dollar is spent. We hold this to be a fundamental principle to democratic government.

NOTICE TO CREDITORS
In the County Court of Wayne County Nebraska, in the Matter of the Estate of Herman C. Thum, Deceased.

WAYNE COUNTY BOARD PROCEEDINGS
Wayne, Nebraska November 19, 1974
The Wayne County Board of Commissioners met for adjournment with members present: Edger and Burt present. The minutes of the preceding meeting were read and approved.

GENERAL FUND

Warrants	FoTax	SoSec	SITax	Balance
Salaries				14057.28
Shirley Towel & Linen Supply				
October 5				32.55
A Check Printer Sales & Service				
Maintenance Agreement				110.00
Fry's National Agency Inc bonds				40.00
Nuxtel Printing Co supplies				74.68
Rothfield & Co. Inc supplies				120.51
Hammond & Stephens Co supplies				20.70
Wayne Herald, October service				1764.33
Western Typographical supplies				4.37
IHM Corporation maintenance agreement				46.08
Merchant Oil Co gas				15.80
Dept of Agricultural Communication				29.00
supplies				20.78
Meyer & Son Supplies				
Nebr Dept of Health water sample				
services				3.00
Superman Crane firm				2.90
Norman Optics - head of fire hall				5.06
Agricultural Extension Service area				
agents & water line				442.50
University of Nebr. Wayne Co share				
of work study student				276.00
Christian E. Barnhart rent & util				106.00
supplies				
Wagner Paper & Supply, Inc. sup				43.05
plies				34.02
Propp Natural Gas nat				187.80
l's Enterprises, supplies				8.90
Co. Lock & Key repairs lock				
Inspector Wayne Nebr. 500 10c				50.00
clamps				

REGIONAL CENTER FUND

Beatrice State Home, in patients	379.00
COUNTY ADMINISTRATION FUND	
Salaries	1260.40
Thelma Moeller travel expense	152.51
Norfolk Office Equipment supplies & new equipment	643.56
Northwestern Bell Sept service	25.02
Charles E. McDermott legal serv	29.00
Wayne County Court, cit adnspp reports	9.00
COUNTY RELIEF FUND	
Nebr Dept of Public Welfare, Octo ber medicals	2422.85
COUNTY ROAD FUND	
Salaries	3319.90
Koplin Auto Supply, repairs	20.66
Morris Machin Shop supplies & repairs	16.50
Dean's Standard Service, gas	225.00
Merrill Egan O-Way, gas and etc	21.50
Nebr Sand & Gravel Co. gravel	2466.52
Warnemunde Ins. & R E Agcy, insur ance on Co vehicles	
Yes. Ellinger Agency, insurance on Co shop	788.67
Koplin Auto Supply, repairs	348.00
Nelson Repair, repairs	38.90
Sandart Repair, repairs	55.15
21.50	
Erving Sand & Gravel Co. gravel	476.95
Mid West Bridge & Construction, gravel	1069.35
Mid Continent Equipment Co. new equipment	3365.00
Wheeler Div. St Regis Paper Co., lumber	3210.00
Farmers State Insurance Agency, in surance on Co shop	262.00
Warnemunde Ins. & R E Agcy, in surance on Co vehicles	288.67
Wayne Co Public Power Dist. Octo ber electricity	8.00
Koplin Auto Supply, repairs	4.76
Witt Welding, repairs	388.70
Tri Co. N 5 Coop Ass'n, diesel and etc.	349.80
Erving Sand & Gravel Co. gravel	105.70
Mid West Bridge & Construction, gravel	105.70
Warnemunde Ins. & R E Agcy, in surance on Co shop	234.00
Warnemunde Ins. & R E Agcy, in surance on Co vehicles	288.66
NOXIOUS WEED CONTROL FUND	
Salaries	463.60
Merchants Oil Co. gas	22.88
Northwestern Bell, Sept serv	15.32

COUPON DAYS

FRI.-SAT. NOV. 29-30

ANIMAL WORLD
KUHNS

Unfilled stuffed dolls and animals - in Rich Red and White of Christmas. Including reindeer, mouse, dog, elf and Santa of course.

99¢

Budget Basement Without Coupon \$1.79

FLOUR SACKING
KUHNS

Flour sacking - washed and mangled, 36 inch square. Slight irregulars. Just 500 to go Budget Basement

57¢ Limit 1

Without Coupon 77c

SLEEPERS
KUHNS

Flame retardant sleeper for infants 1 to 4. With feet. Solids and prints. Irregulars.

\$2.47 Limit 2

Budget Basement Without Coupon \$4.98

BED SPREADS
KUHNS

First quality discontinued styles of Lady Linda quilted spreads. Puffy dacron fill. Twin and full size. Save \$5.00 to \$10.00. Think of Xmas.

\$15 Limit 2

Budget Basement Without Coupon \$28 & \$25

KNIT MITTS & GLOVES
KUHNS

WITH THIS COUPON

20% DISCOUNT

Main Floor

BUBBLE UMBRELLAS
KUHNS

What a buy. Full size Bubble Umbrella. Assorted colored trim. Ideal Xmas gift.

\$1.27 Limit 1

Main Floor Without Coupon \$2.25

BEACON BLANKETS
KUHNS

Big 72 x 90, 2 pound beacon acrylic blanket. Assorted colors. Wide satin binding, limited quantity.

\$4.77 Limit 2

Budget Basement Without Coupon \$5.99

LADIES PANTIES
KUHNS

The panty that fits with comfort. Two way stretch panel. Holly wood brief. White. Sizes 7 to 10.

2 for \$1.00 Limit 4

Budget Basement Without Coupon 79c

Shop Friday Night Til 9
We Give XMAS Tickets!

Kuhns
"We Never Say No"

GIBSON'S gibson discount

WAYNE, NEBR

WE WILL BE CLOSED Thanksgiving Day

— NEW HOURS —
Monday - Saturday — 9 a.m. - 9 p.m.
Sundays — 11 a.m. - 7 p.m.

VA Q&A

Q. I am a 100 per cent service-connected disabled veteran entitled to CHAMPVA benefits. My wife is entitled to Medicare. Can she obtain her prescriptions under CHAMPVA?
A. No. Dependents eligible for Medicare are not entitled to benefits under CHAMPVA.

Q. I am eligible for a GI loan, and wonder if the Veterans Administration will guarantee a loan for both a mobile home and land to place it on?
A. Yes. The maximum quantity for mobile homes is \$10,000. But if the loan includes site acquisition, it can be increased to \$17,500.

Give RCA The Gift That Keeps On Giving.

Just in time for Christmas

Time is running short, but we still have some great values in "The Gift That Keeps On Giving" by RCA. Everything - from budget-priced RCA black-and-white TVs to magnificent RCA XL-100, 100% solid state color consoles. Don't settle for less. But hurry. Christmas is almost here!

RCA

Value-priced RCA XL-100 table model. only \$499.95

The ACCENT Model F7470 19" diagonal

Look what you get in every RCA XL-100

1. XL-100, 100% solid state reliability
2. RCA's best picture tube ever - XL-100 sets with the black matrix picture tube give you sparkling bright, dramatically detailed color pictures and natural, warmer, more pleasing flesh tones.
3. Automatic Fine Tuning convenience.

More TV experts own RCA... More TV program directors, TV station chief engineers, senior TV cameramen and independent TV service technicians own RCA than any other color TV!

The ASHERTON Model G7273 25" diagonal

Great buy in an XL-100 console. only \$649.95

RCA XL-100 100% solid state. Don't settle for less.

Now's the time! Here's the place! Buy today!

SWANSON TV & APPLIANCE

311 MAIN STREET PHONE 375-2690

SELL IT FAST! BUY IT RIGHT! USE WANTADS!

Phone 375-2600

15 Words... Only \$1.20

Run Ad 2 Issues - 3rd Issue FREE

PUBLIC NOTICES

NOTICE
Case No. 6105
In the District Court of Wayne County, Nebraska
Susan Otte, Plaintiff, vs. Ronald Otte, Defendant

To Susan Otte Gowen:
Take notice that the defendant has filed an application in the above entitled court action for the custody of Becky Otte, and to delete the Order for child support previously entered. That unless you answer or plead to the application of the defendant filed herein on said action on or before the 12th day of December, 1974, judgment will be rendered against you to transfer the custody of Becky Otte to the defendant and an Order entered making all previous orders for child support payments.

RONALD OTTE, Defendant,
By John V. Addison,
His Attorney
John V. Addison
Attorney at Law
Wayne, Nebraska 68787
(Publ. Nov. 7, 14, 21, 28)

NOTICE OF MEETING
The Wayne County Board of Commissioners will meet on Tuesday, Dec. 3, 1974 at the Wayne County Courthouse from 9 a.m. until 4 p.m. The agenda for this meeting is available for public inspection at the County Clerk's Office.

N. F. Weible, County Clerk
(Publ. Nov. 25)

NOTICE OF MEETING
The Wayne County Board of Education will meet in regular session at 7:30 p.m. on Monday, December 2, 1974 at the high school, located at 611 West 7th, Wayne, Nebraska. An agenda of said meeting, kept continually current, may be inspected at the office of the superintendent of schools.

(Publ. Nov. 28)

We Have So Much To Be Thankful For Today

Each day offers us a horn of plenty overflowing with family, friendships and wonder. These joyful blessings are best shared. Let's get into the habit of sharing... now!

JOHNSON FROZEN FOODS



4006 NOV 74 M.P. 52

For Sale

FOR SALE: 1971 Camaro Good condition. Power steering and brakes, new tires, stereo, new paint job with pin stripping. Call anytime after 6 p.m., Ponca, Nebr., 1-755-2748. n2513

PRICES SLASHED - Reheat cookware. Call 529-6375 to see. n418

FOR SALE: 1966 Yamaha motorcycle. Phone 375-3613 after 5 p.m. n2911

Help Wanted

WANTED TO HIRE Experienced Nurses Aides. WAYNE CARE CENTRE Phone 375-1922

\$2.17 Per Hour

We have immediate openings in our plant for full time people on both day and night shifts at \$2.17 and \$2.12 per hour. We also have openings for part time people on both day and night shifts at \$2.00 and \$2.02 per hour. Apply in person at the office of:

The Milton G. Waldbaum Co.,
Wakefield or call collect at 287-2211 between 8 and 5 p.m. An equal opportunity employer

Part-Time Help

Four openings now. \$40-\$50 per week, working from your home. For interview, call R & J Associates, 529-6375 between 4 and 7 p.m. n418

WANTED: Full time bookkeeper and secretary capable of handling full set of books. Five days per week. Monday through Friday, 8:30 to 5:30. Write Box BPW, c/o The Wayne Herald, Wayne, Nebr. n711

HELP WANTED: Kitchen help. Black Knight Upstairs. Good pay. n2911

HELP WANTED: Man to work for insulation crew. Must be dependable. Good opportunity for advancement. Stop in for more information. Maxra Home Improvement Co., 220 So. Main St. Phone 375-1343, Wayne, Nebr. n2411

Business Opp.

MANAGER NEEDED Exceptional opportunity for a married man interested in fast advancement and a successful future. Our company is growing and expanding. We need a man who can learn and accept the responsibility of an expanding business. The sky is the limit for an ambitious man willing to learn and not afraid of a challenge. If you are enthusiastic and would like to work towards owning a business, call

Mr. Thomas 379-0686

Wanted

BUYING COINS: All coins, gold, silver, etc. Also appraisal coins for sale for estates. Frank Prather, P. O. Box 143, Wayne. n2113

WANTED: Stacked hay and custom hay moving. Have truck mover. Call Darrel Farran, 329-4351, Pierce. j111

WANTED: Unfurnished apartment to rent. One or two bedrooms. Middle-aged woman. Phone 375-4375. n2114

COBS WANTED: We buy cobs and pick them up on your farm. For prompt removal, call Landholm Cob Company, 372-2690, West Point. j2111

Sports Equipment

LARGE SELECTION of 1974 Yamaha motorcycles. Many used cycles—all sizes—and makes. Call 373-4316 for an evening appointment. Complete Sales and Service. Thompson Implement, Bloomfield, Nebr. m2311

For Rent

FOR RENT: Water conditioners, fully automatic, life time guarantee, all sizes, for as little as \$4.50 per month. Swanson TV and Appliance. Phone 375-3690. n411

BE RIGHT WITH WATER RIGHT

Water Softener
Rent or Buy
See Us NOW

L.W. "Bud" McNatt
OK Hardware
Wayne
203 Main St. Phone 375-1533

Special Notice

WE HAVE CHRISTMAS CARDS designed for every profession. Stop in and see yours today. Have them personalized for that extra touch. The Wayne Herald.

Real Estate

WAYNE COUNTY 160 acres, gently rolling, improvements are old. All tillable, except building spot. Priced for quick sale at \$435 per acre. Located 8 miles south, 3 1/2 miles west of Wayne, Nebraska. Call Earl McDonald 402-393-7012 collect or office 397-2990. Mid-Continent Properties, Inc. Suite 117 8990 W. Dodge Rd Omaha, Nebraska 68114

FOR SALE: Nice residence in Hadar. On highway, next to store, close to church. Call 371-3339 or 375-1151 for more information. n8111

Land Auction

Thursday, Dec. 5, 1 p.m., at farm located one mile south and one mile west of Wakefield, Nebr., known as the Clare Buskirk farm. NE 1/4 Section 7, T26, R5E., Wayne County. 160 acres more or less, choice farm land. Will be offered as two-80 acre tracts and as one unit. Good fences, ideal location. Terms 20 per cent day of sale, balance on or before Feb. 1, 1975. This farm will be sold to highest bidder without reserve. Down payment will be held in escrow at Wakefield Bank until clear title is furnished and settlement is made. Owners William E. Spader and John H. Fritsch.

HERBOLD AUCTION and REALTY

Lawton, Ia. Phone 712-944-5123

For Sale

Custom built homes and building lots in Wayne's newest addition. There's a lot to like in the "Knolls."

Vakoe Construction Co.
Phone 375-3374 - 375-3055 or 375-3091

FOR SALE: New house at 710 West Third. Al Reeg Construction n3111

WE HAVE 2 STORES FOR YOUR SHOPPING CONVENIENCE!

106 MAIN A Full Line of New - Frigidaire and Maytag Appliances
115 MAIN A Wide Selection of Guaranteed Used Appliances

WE SERVICE WHAT WE SELL

KUGLER ELECTRIC
Russ Tiedtke, Owner

HAVE ELECTRICAL PROBLEMS? Call us for everything in electrical needs. Swanson TV and Appliance, phone 375-3690.

PRESCRIPTIONS

The most important thing we do is to fill your doctor's RX for you.

GRIESS REXALL STORE
Phone 375-2922

MOVING?

Don't take chances with your valuable belongings. Move with Aero Mayflower, America's most recommended mover.

Abler Transfer, Inc.

Cards of Thanks

THE FAMILY OF LaVerna Wagner would like to thank everyone for the food, flowers and memorials for our loved one. A special thanks to Pastor Paul Reimers for his prayers and sermon. Mrs. Paul Reimers and Mrs. Lyle Krueger for their music to the Trinity Lutheran Ladies Aid for the lunch and to everyone who helped us in any way. n28

MOLLER AGENCY REAL ESTATE

RESIDENTIAL FARM COMMERCIAL
112 WEST 3RD STREET 375-2145

Misc. Services

HELP US LIGHTEN the Christ mass rush. Order your cards now. There is plenty of time to have them personalized. The Wayne Herald.

State National Bank & Trust Company welcomes the opportunity to handle your orders for purchase or redemption of **U.S. Government Securities**

MARKED DOWN PRICES!!!

- 1975 NOVA Custom Coupe, automatic, tinted glass, radio, power steering, white tires, rally wheels, light saddle color, only \$3890.00
- 1975 NOVA Custom Hatchback, automatic, power brakes, tinted glass, space mirrors, radio, power steering, rear seat speaker, white tires, rally wheel covers, light grey with black vinyl top, only \$4210.00
- 1975 VEGA Hatchback, automatic, custom interior, body side moldings, radio, white tires, deluxe bumper, front & rear, white color, only \$3545.00
- 1975 CHEVROLET 1/2-Ton, 4-wheel drive, V-8, automatic, power steering, radio, gauges, heavy shocks & springs, medium blue color, only \$4895.00
- 1975 CHEVROLET 3/4-Ton, Pickup, 4 wheel drive, V-8, automatic, power steering, gauges, heavy duty shocks, power brakes, yuba gold color, only \$5215.00
- 1975 BLAZER, power steering, rear seat, heavy duty shocks, gauges, Grecian bronze, with white top, only \$5550.00
- 1974 MUSTANG II, Coupe, V-6, automatic, air conditioning, power steering and brakes, AM-FM radio, only 27,000 miles, only \$3795.00
- 1973 CHEVELLE MALIBU, 4 door, 350 V-8, automatic, power steering and brakes, air conditioning. See this one! only \$3295.00
- 1973 NOVA, Custom Hatchback, 350, V-8, hydromatic, air conditioning, power steering and brakes, red in color, sharp! only \$3195.00
- 1973 INTERNATIONAL, 1/2-Ton, 4 wheel drive, V-8, 4 speed transmission, only 24,000 miles, only \$3695.00
- 1970 CHEVROLET, 1/2-Ton Fleetside, 307 V-8, automatic, 2 tone paint, only \$1595.00
- 1970 FORD F-600, Chassis and cab, V-8, 4 speed, 2 speed rear axle, 900 rubber, HD throughout, only SAVE

CORYELL AUTO CO.

State-National Farm Management Co.

Real Estate Sales and Loans
Henry Ley — REALTORS — Felix Dorcay

Sheryl Jordan, Ted Bahe, Gwen Brandenburg, Tom Dorcay, Alex Liska, Salesmen - T.J. Hughes, Broker Salesman
111 WEST SECOND BOX 307 PHONE 375-2990



NEW LISTING
Four bedroom home — centrally located. Dining room, living room, kitchen, hallway and half bath on main floor. Near new carpeting in dining room and living room. Four bedrooms and full bath on second floor. Full basement with near new forced air gas furnace.



Older four bedroom home located on choice 75' x 150' lot near downtown. Dining room, living room, kitchen, bath and one bedroom on main floor. Three bedrooms on second floor. Large, detached garage with extra storage space.

COMMERCIAL

Large brick building located on main street in Wakefield. Excellent condition.

CHOICE BUILDING LOTS AVAILABLE IN WAYNE!



Extra nice commercial building located on main street in Wayne (150 feet frontage). Over 5700 square feet on main floor plus 1200 square feet in basement. 450 feet of parking surrounding the building. Exceptionally well built — in excellent condition.

Check With Us Before You BUY - SELL - RENT



Quality built four bedroom home located on 75' x 150' lot near downtown. Kitchen, dining room, living room and parlor on main floor. Open stairway leading to four bedrooms and bath on second floor. Full basement. Forced air heat. Fully insulated. Detached garage.



Remodeled four bedroom home with new family room, newly remodeled kitchen, living room and half bath on main floor. Three bedrooms and full bath on second floor. Located on large lot between elementary and middle schools. New all steel 36' x 24' detached garage.

New Listings! APARTMENTS

Five unit apartment house in excellent repair located near downtown. Fully occupied with excellent tenants — one dating back over 25 years.

Both Units Priced for Good Return on Investment!

Near new four unit apartment house located near college and close to new hospital. History of 100 per cent occupancy. All units in excellent condition.

FARMS FOR SALE

160 acres in Dakota County. 75 acres corn base (72 bushel yield), 45 acres alfalfa, 16 acres pasture. Farrowing facilities for 40 sows. New water works with four automatic waterers in lots. Two bedroom home, new bath.

CLIP THESE COUPONS

Griess Rexall

Schick **HOT LATHER MACHINE**
\$19.95 Value
With Coupon **\$11.99**
Coupon Expires Dec. 1.

Griess Rexall

\$100 off
on purchase of
ANY COTY PERFUME
or gift set — Friday & Saturday only.
Free Gift Wrapping

Griess Rexall

Kodak **Smile Saver**
Camera Kit
\$29.95 Value
With Coupon **\$23.95**
Coupon Expires Dec. 1.

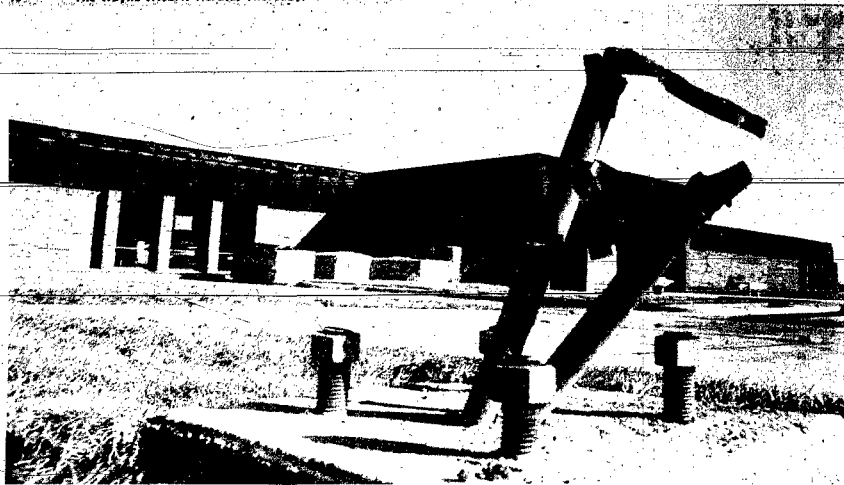
Griess Rexall

Uniroyal 252
Golf Ball Gift Set
\$15.00 Value
With Coupon **\$7.50**
Free Gift Wrapping

Griess Rexall

FLASHCUBES 99¢
or
MAGICUBES \$1.29
Coupon Expires Dec. 1.

Griess Rexall Store
221 Main St. Phone 375-2922



'Pledges to Hospital Need A Boost'

Pledges for construction of the new Providence Medical Center in Wayne are about two-thirds collected, according to the secretary of the Pledge Service Committee.

The Committee has collected about \$530,000 of the \$885,500 pledged to help build the facility just east of Wayne State College, said Mrs. Laura Dion.

Mrs. Dion pointed plans are to have the hospital open in April

and completely paid for the following year.

The Medical Center Building Program started in 1971 to raise enough money to build a hospital. According to Mrs. Dion, the pledge program is a five-year program, and if pledges continue to come in, the committee should have the necessary funds to pay off the construction bills by 1976.

Construction of the 26-bed

hospital began last year. So far construction crews have completed most of the exterior work and most of the paving.

Kenneth Olds, chairman of the group working on pledges, said all funds collected to date have been spent except for one \$10,000 certificate of deposit.

"We have had to borrow \$34,000 in order to meet our obligations to contractors for material and labor as work

progresses," he said, noting that all those whose pledges are due in 1974 or the early part of 1975 should consider paying at this time.

"A payment now, even though payment may not be due until the end of this month, will save additional borrowing and will save the interest we would prefer to see going into the project," he said.



A WORKMAN from a Yankton plumbing firm cuts threads for part of the water line under construction at the one story medical center.

Prize —

(Continued from page 1) The exact date drawn, she would have won the \$675 prize.

The winning date this week will be announced in all stores at 8:15 Friday night.

Area residents do not have to purchase anything to be eligible for the weekly drawings, but a person must be present in one of the stores to win either the grand prize or the consolation prize. Each week there is no grand prize winner, the \$25 consolation prize is awarded.

Buying Power —

(Continued from page 1) 46.7 per cent, this was high. The breakdown figures for the local area list 22.3 per cent of the households with net incomes

of \$5,000 to \$8,000, 12.7 per cent at the \$8,000 to \$10,000 level, 20.5 per cent between \$10,000 and \$15,000 and 21.7 per cent higher than that. The others have \$5,000 or less left after taxes.

The bigger incomes have not improved the buying power of the average family, however, the cost of living has been rising at a faster clip than incomes in the last year or so.

Winners —

(Continued from page 1) National Honor Society, Rainbow Girls and drill team.

Krei, a 1974 graduate of Cole ridge Community School, is a W.C. teacher. His high school activities included football, basketball, track, letterman club, honor society and student council.

OBITUARIES

Arthur Munson

Arthur Judgick Munson, 86, of rural Wakefield died Saturday at the Wakefield Health Care Center. Funeral services were held Tuesday at the Evangelical Covenant Church, Wakefield, with the Rev. E. Neil Peterson officiating. Burial was in the Wakefield Cemetery.

The son of John S. and Ellen Oberg Munson, he was born March 16, 1888 at rural Wakefield. He was united in marriage to Esther Nelson March 15, 1922 at Wayne.

He is preceded in death by his wife and daughter. Survivors include two sons, Carroll and Conrey, both of Wakefield; two granddaughters, Julie and Heidi; and two brothers, Clifford and Harry, both of Wakefield.

BEN FRANKLIN TOYTOWN

Gay Wrap Your Gifts for Pennies Apiece!

CHOICE OF

- Jumbo Log Rolls of colorful paper 75-94 ft. roll, 30 sq. ft. All 30-in. wide. **157**
- Color co-ordinated wrapping paper in 6-roll packs. 26-in. wide. **99¢**
- choice **157** each

Candy Treats

- SOLID CHOCOLATES** - Best of delicious individually wrapped chocolates. Christmas balls, sets to Savas. 8 to 10 oz. in bag. **99¢** bag
- Bank-O-Matic BUBBLE GUM BANK** - Helps them save! Contains 100 pieces of gum and key and gum tabs. **99¢** each

PKG. OF 25 CRYSTAL BOWS

Luxurious package toppers of 1/2-in. ribbon. Holiday colors. **57¢** pkg.

BOX OF 18 CHRISTMAS CARDS

25 different designs per box. Wide selection. Envelopes included. **77¢** box

SANTA'S BOOK OF CANDY

10 rolls of delicious candies in delightful gift-book box. **79¢** pkg.

CHRISTMAS GIFT TAGS

Wide choice! Cards and folders in many festive designs. **37¢** pkg.

HOLIDAY GIFT TIES

Whimsical figures, wreaths, foils and festive holidays. **47¢** pkg.

LINEN CALENDAR TOWELS

100% pure linen in your choice of patterns. About 16 1/2 x 26 in. size. **149**

Happy Huff 'n' PUFF TRAIN

More than a toy! A train that's big and fun and warm and friendly with his own story book. Powered entirely by a child's imagination. **997**

SCHOOL DAYS PLAY DESK

Make school fun at home. Complete with alphabet numbers, activity cards, chalk, eraser. 3 to 8 years. **697**

Walt Disney's TREE ORNAMENTS

Snow White and the 7 Dwarfs. 12 different ornaments for your tree. **87¢** each

DOOR DECORATIONS

Large 34 x 44 inch designs for your door. Christmas, New Year. **197** each

GARLAND TRIMS

20 ft. elegant trim. 12 ft. 18 in. Moss green. **197** each

Spark-Tax. Drapes. TREE SKIRTS

Flattering non-fam. make curtains, battens, drapes, covering for tree stands. **87¢** each

TWINKLE-LITE TREE TOP STAR

Many color mixing. Turn the star on. **199**

Trees and Trims!

Artificial SCOTCH PINE TREES

Use them year after year. So realistic you can almost smell the pine! Rich, lush, moss green trees. Flame retardant. Complete with stands. 2 & 4-ft. fully assembled. 6 & 7-ft. come with 3-ft. assembled tops.

- 2 FOOT SIZE **247**
- 4 FOOT SIZE **997**
- 6 FOOT SIZE **1597**
- 7 FOOT SIZE **1997**

BOX OF 12 GLASS ORNAMENTS

2 1/2 in. size. All with satin white. **119**

COOL-BURNING LITES

15 lite set. Ideal for all trees. Assorted colors. **297**

Scotch & Righter SCRABBLE

A family favorite for 2 to 4 players. Spell words on crossword-style board. **497**

Yahzee

Makes thinking fun. An exciting game of skill and chance. **199**

BATTLESHIP

A fascinating strategy game. **497**

CHESS AND CHECKERS

Set includes everything you need to play these two games of skill, both popular favorites. **249**

PUSH-BUTTON CASH REGISTER

10 rev. plastic toy works just like a real one. **349**

10-1/2-in. BEAN BAG CHARACTERS

Stuffed with styrene pellets. **297** each

BEN FRANKLIN The Pick of Santa's Pack!

207 - 209 Main Street WAYNE, NEBRASKA

ETCH-A-SKETCH

Write, draw, just turn the knobs. **377**

OPERATION

Patented. **497**

MB

397

SPIROGRAPH - DRAWING SET

Contains everything you need to make beautiful designs. **399**

Begging PUPPY

A lovable little puppy. **397**

SUPER WIND-UP LOCOMOTIVE

Will delight every young engine fan. **397**

WIND-UP TANK

Features climbing action. **397**

MUSICAL ANIMALS

Soft foam, hand-decorated. **497**

Mrs. Leroy Penlerick Hosts Sunshine Club

Mrs. LeRoy Penlerick entertained the Sunshine Club in her home Nov. 20. Nine members were in attendance. The afternoon was spent playing bingo.

Mrs. Oliver Noe was the door prize recipient.

The Dec. 11 meeting which will be the Christmas party and gift exchange, will be in the Clarence McCaw home.

The lesson on "Environment Awareness" was presented by Mrs. Florence Johnson and Mrs. William Penlerick.

A fruit basket was prepared and taken to the Sausser Home.

Mrs. George Rasmussen received the door prize.

A Christmas party for members and their husbands will be held in the Mike Dirks' home, Dec. 17 at 2 p.m.

Papa Partners

Nine members of Papa's Partners Extension Club met Nov. 19 in the Amanda Schutte home, Laurel.

7 Answer Roll Call

Twilight-Line Extension Club met Nov. 19 in the Marvin Nelson home. Seven members answered roll call.

Dixon News

Mrs. Dudley Blatchford Phone 584-2588

The lesson "Let's do something about our environment" was given by Betty Anderson Mrs. Ernest Knoll, received the door prize.

The next meeting will be Dec. 10 in the Ernest Knoll home, with a gift exchange.

ST. AGNES CATHOLIC (Rev. Thomas Adams) Sunday: Mass, 8 a.m.

LOGAN CENTER UNITED METHODIST (A. M. Ramos, pastor) Sunday: Sunday school, 10 a.m., morning worship, 11 a.m.

DIXON UNITED METHODIST (A. M. Ramos, pastor) Sunday: Morning service, 9:30 a.m. Sunday school, 10:30 a.m.

Dinner Guests

Guests Sunday in the Clifford Strivens home for a pre-Thanksgiving dinner were the Carl Strivens, Bloomfield, the Bob Strivens and David, the Bill Strivens and daughter, and Bruce Jorgensen, all of Wausau.

The Gary Strivens and son, and the Gaylord Strivens of Norfolk, Gordon Yunkers and son, Coleridge, the John Urishes, Columbus, the Allen Jorgensen and son, Yunkers and the Dale Strivens and Rod, Allen.

The Richard Schulte family,

THE WAYNE HERALD

99th Year — No. 45 Wayne, Nebraska 68787, Thursday, November 28, 1974 Section 2 — Pages 1-12

giving dinner were the Casper, Wyo., and the Mike Schuffles, St. Cloud, Minn., came Sunday to visit in the Walter Schulte home.

The Garold Jewells, the Warren Palehoids, and the Milo Palehoid family were guests Sunday in the Merlin Smith home, Audubon, Ia., for a pre-Thanksgiving dinner.

The Sterling Borgs and Anna attended the Oklahoma Nebraska football game at Lincoln, Saturday.

Darlene Oxley, Omaha, spent Wednesday-Friday in the Don Oxley home.

The Fred Frahm visited in the Ed McKain home, Blair, Tuesday afternoon.

The Russell Westadts, Hawarden, were Saturday dinner guests in the J. T. Craven home.

Mrs. Walter Rahn, Mrs. Lola Rahn, Ponca, spent Friday afternoon in the Newell Stanley home.

The J. L. Saunders and the Lowell Saunders were Tuesday dinner guests in the Stanley Binkman home, Minden, Ia.

Sunday supper guests in the Leroy Penlerick home were the Alvin Havikosis, Fremont, the Earl Eckerts and the Dave Abts.

COUPON DAYS



Coupon Days in Wayne, City-Wide — Friday, Nov. 29 & Saturday, Nov. 30.

Shop Friday Evening Until 9 p.m.

All items listed on this ad good for these two days only. Clip your coupons and come to Wayne, you will find many items which you will want and you can have tremendous savings too. Be sure to plan to visit Swans' Ladies Store, ask for your Free Cash winning tickets. FREE GIFT WRAPPING on all the items which you buy for Christmas or otherwise, pretty handmade bows and the trimmings.

We Give & Redeem National Dividend Coupons

DRESSES

Our entire stock of better dresses included on this sale. "Prices good for these two days only." High quality garments and new this fall styles and shades. Full sizes and straight sizes. Clip the coupons below, come to Swans', make your selection and save many dollars. Brands like Butte Knits, R & K Originals, Mendels, Mynettes, Hob Nobby, City Scene, Leslie Fay, and many others.

SWAN'S COUPON

Dresses Regularly priced at \$25 - \$34

\$5⁰⁰ COUPON

SWAN'S COUPON

Dresses Regularly priced at \$35 - \$43

\$6⁰⁰ COUPON

SWAN'S COUPON

Dresses Regularly priced at \$45 - \$52

\$8⁰⁰ COUPON

SWAN'S COUPON

Dresses Regularly priced at \$54 - \$68

\$10⁰⁰ COUPON

SWAN'S COUPON

Dresses Regularly priced at \$70 - \$75

\$11⁰⁰ COUPON

SWAN'S COUPON

Sale Dresses & Pant Suits Reduced price \$59⁰⁰ - \$80⁰⁰

\$8⁰⁰ COUPON

SWAN'S COUPON

NANCY FROCKS Day Time Dresses Sizes 12 1/2 to 24 1/2 and 10 to 20 Reg. \$10⁰⁰

\$2⁰⁰ COUPON

SPORTSWEAR

Our entire stock of fall and holiday sportswear on this sale. Jack Winter, Pykettes, Terry, Booth Bay and others. Slacks, jackets and tops.

SWAN'S COUPON

Sportswear Jackets Reg. Price from \$26 - \$34

\$5⁰⁰ COUPON

SWAN'S COUPON

Sportswear Jackets Reg. Price From \$35 - \$47

\$6⁰⁰ COUPON

SWAN'S COUPON

Sportswear Slacks Reg. Price from \$14 - \$16

\$3⁰⁰ COUPON

SWAN'S COUPON

Sportswear Slacks Reg. Price from \$17 - \$20

\$4⁰⁰ COUPON

SWAN'S COUPON

Sportswear Slacks Reg. Price from \$22 - \$26

\$5⁰⁰ COUPON

SWAN'S COUPON

Sportswear Tops Reg. Price from \$14 - \$16

\$3⁰⁰ COUPON

SWAN'S COUPON

Sportswear Tops Reg. Price from \$17 - \$22

\$4⁰⁰ COUPON

PANT SUITS

Our entire stock of ladies fine Pant Suits, popular brands like Butte Knits, R & K Originals, Leslie Fay, Terry, Mynette and others. Half Sizes and straight sizes.

SWAN'S COUPON

Pant Suits Reg. Price from \$38 - \$50

\$7⁰⁰ COUPON

SWAN'S COUPON

Pant Suits Reg. Price \$55 - \$65

\$9⁰⁰ COUPON

SWAN'S COUPON

Pant Suits Reg. Price from \$70 - \$75

\$11⁰⁰ COUPON

SWAN'S COUPON

Pant Suits Reg. Price from \$77 - \$90

\$13⁰⁰ COUPON

A Christmas BONUS For YOU!

Christmas Gift Certificate

TO BE USED AS CASH WHEN MAKING PURCHASE

Worth \$10.00 on a Purchase of \$100.00 or more
 Worth \$5.00 on a Purchase of \$50.00 or more
 Worth \$2.50 on a Purchase of \$25.00 or more
 Worth \$1.50 on a Purchase of \$15.00 or more
 Worth \$1.00 on a Purchase of \$10.00 or more

Offer does not apply to previous purchases.
 Offer effective December 2-8 & offer limited to one check per sale.

Swans' Apparel For Women
 205 MAIN ST., WAYNE, NEBR. 68787

SWAN'S COUPON

Mojud Panty Hose Petite, average, average tall & tall tall.

Reg. \$2⁰⁰ **50¢** COUPON

SWAN'S COUPON

Mojud Nylon Hose Regular seamless, as well as nonrun stretch and Cantreese.

Reg. \$4⁰⁵ **\$1¹⁵** COUPON
 3 pair in box

Shop Here & Receive 'Christmas Bucks' Tickets

In Nebraska, there is much to be grateful for this Thanksgiving

CAPITOL NEWS
LINCOLN— Blessings abound for which we give thanks this season. There is peace — shaky as it is in some areas. There were crops to harvest — not as much as had been hoped, but skilled husbandry by the farmers and research by the scientists blunted the edge of a drought which could have caused more misery. The nation's economic ills — devastating as they are — may strike Nebraska only a glancing blow compared to her more industrialized sister states. A state economy rooted in agriculture, assuming the weather provides at least half-hearted cooperation, is better equipped to survive. There are blessings, even, in state government, maligned as it often is.

Nebraskans can be proud of programs for the mentally retarded which have a national reputation for excellence. Changes in attitude and treatment techniques have assisted the mentally ill to return to productive roles in society much more quickly. Politicians of all political faiths and on both sides of the constitutional line which divides the executive from the legislative have endorsed reforms in the handling of legal offenders. Programs to rehabilitate — rather than merely to warehouse — lawbreakers are being expanded. Again, Nebraska is acknowledged nationally as a leader. A three-layer system of higher education has been developed, provid-

ing post high school programs which range from the most sophisticated academic subjects to the most practical job skills. The University of Nebraska at Lincoln, the two largest cities, conducts research and trains minds for the urban centers and the farm fields. A medical center acclaimed for its work in cancer and cardiology, among other areas, is supplying the physicians who are in need. The state colleges, though struggling in a financial vise, provide an alternative for the Nebraska student who wants a four year higher education program without the crowds of a major university campus. The courts have put question marks behind the financing of the two year

programs offered by the technical community college system, but state officials almost unanimously have remained loyal to the principle of a system of institutions able to offer vocational training and basic academic education. Again, the Nebraska package of junior colleges and technical schools has drawn admiring glances from around the country. There continues to be confusion — heightened by the voters' rejection of a significant increase in state aid — about the financing of the elementary and secondary schools. But Nebraskans have a tradition of more than a century in length that basic education is the birthright of each of their sons

and daughters. Programs, especially those which provide special education for the handicapped, re-emphasize that commitment. To whatever extent buildings serve as evidence of a state's prosperity and progressive attitudes, several major projects are under construction. The biggest, measured by dollars, is the new state office building and adjacent parking facilities being built just north of the Statehouse. Farther north on the State Fair grounds — a trellishouse to be shared by the fair board and the University of Nebraska is being closed in. It will provide arenas for the university's basketball, swimming and indoor track — as well as wrestling, gymnastics and other sports. The fair will

use it for entertainment previously held before the grandstand of the horse race track. Major improvements are underway, as a matter of fact, in other fair grounds facilities — including the racetrack and grandstand. In Omaha, a new building to serve as central offices for state agencies which operate in the metropolitan area is to be constructed. All three campuses of the university have had significant construction in recent years and workmen are busy now on many projects. New facilities for life sciences and expansion of the library are two of many Lincoln campuses examples. There are others in Omaha. There is much to be thankful for. Peace most of all.

OBSERVATIONS

Wanted: Ideas, workers

Another dozen communities and counties in the state have been recognized by the American Revolution Bicentennial Administration (ARBA) as national Bicentennial Communities.

The closest one to Wayne is Ponca. Other communities which have received the official designation include such towns as Burwell, Dodge, Verdigris, Walthill, Sutherland and Riverton, all of them smaller than Wayne and many of them no larger than the small towns surrounding Wayne.

Here's some examples of what those other communities in the state are planning.

Burwell will reprint a book titled "Trails of the Loup" which was first published in 1906. Copies of the book are difficult to come by now. Also, Burwell will publish a pictorial history of the famous Burwell Rodeo, now in its 53rd year, and the Burwell city park will sport its name in plant letters.

Verdigris has a 100-year-old grist mill that has been moved to the downtown area to serve as a museum. The Kolach Days of 1976 will stress more than usual the heritage of the community through demonstrations of Czech dances, crafts and music. And the community's bicentennial committee will raise money for a flagpole and memorial to the area's servicemen.

Sutherland plans to erect a railroad museum and to have groups of all ages

help outfit it. The basement of the museum will be finished for use by local groups for meetings in 1975, and that year the community will name a "community tree" so it can be planted through the town to replace those killed by Dutch Elm disease.

Walthill's old city jail will be turned into a museum, and a mini-park is being planned for the area surrounding the museum jail. The community also plans a youth center.

These are simple ideas, things which the communities should have little trouble in getting public support in accomplishing. We find it a little difficult to understand why Wayne, Winside, Hoskins, Carroll, Laurel, Dixon, Concord, Allen, Wakefield and other communities in the area can't come up with some similar ideas so citizens of this part of the state can do their part to mark the 200th birthday of this nation. — **Norvin Hansen**

Letters Welcome

Letters from readers are welcome. They should be timely, brief and must contain no libelous statements. We reserve the right to edit or reject any letter.

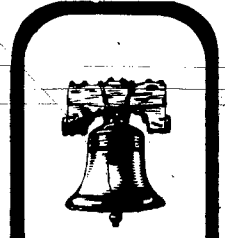
Letters may be published with a pseudonym or with the author's name omitted if so desired. However, the writer's signature must be a part of the original letter. Unsigned letters will not be printed.

In Washington:

'A two-bit burglary and years of service go right down the drain'

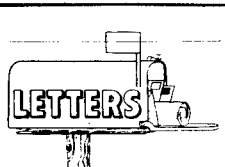
By **RON HENDREN**
WASHINGTON—Last week, in an unprecedented move, the Justice Department revealed that its own F. B. I. was engaged in a widespread campaign of "dirty tricks" as early as 1956. Lacked veteran Justice official Joe "Magaret" Tapes' Crowley why the Department had chosen to wash its dirty linen in public. "Dirty linen?" Crowley shot back angrily. "Nobody is washing any dirty linen. It's just that our reputation was at stake." "I can certainly see that," I responded gingerly. "And you wanted to let people know that you weren't going to tolerate illegal wiretapping, character assassination, and needless snooping into the private lives of thousands of innocent citizens." "Balderdash and whipsnoot," Crowley retorted impatiently. "Young man, I've been around here for 30 years, and we've forgotten more about dirty tricks than those bumblers who were over at the White House will ever know. Yet, just look at all the press they've gotten. It's not fair, and we wanted to set the record straight once and for all on who the experts were. Why, we were pulling off dirty tricks before some of those chubbies were even born." "I can see that you're pretty upset," I ventured. "You'd be upset too if your whole career was very nearly ruined and your profession discredited by some jerks who didn't have enough sense to

pull a piece of tape off a door lock or change a reel on a recorder or launder a few dollars without getting caught. Why it's a disgrace!" "Yes," I agreed, "they were pretty inept." "You're right, and we just wanted to let the American people know that we've been doing this kind of thing for years, and not once has anyone ever been caught," Crowley said. "I guess that's a record to be proud of," I offered. "You're darn right it is, and I think it's about time you people in the press gave a little credit where credit is due. Why, we've pulled off more than 2,000 different snooping programs — some legal, some touch-and-go, and some, well, anyway, they were all successful and you didn't read about any of us spilling the beans to a grand jury. No sir, we did our jobs and kept our mouths shut." "You've certainly worked hard," I said, for I could see that he was a proud man who had been deeply hurt. "Yes, and now it'll never be the same. One two-bit burglary and we have to dump the whole apple cart just to protect our good name. Years of dedicated service down the drain." "What will you do now?" "Oh, I guess I'll retire. Maybe go into the tape recorder business. I'll be a dull existence after being here, but at least I'll be at peace knowing that at long last American people can appreciate all that we've been doing for them."



EDITORIAL PAGE

Our liberty depends on the freedom of the press; and that cannot be limited without being lost. — **Thomas Jefferson, Letter, 1786.**



Winter's column riddled with errors

Dear Editor
 William Winter's column, published in the November 21st Herald, is in exactly the same vein as the Jiresome rubbish with discredited nineteenth century economic ideas that he used to broadcast on the radio 20 years ago. The particular column is so riddled with errors of grammar, fact and interpretation that it is beneath-detailed criticism. It is also beneath the readers of the Herald. — **T.H. Stevenson, PhD**

[Editor's Note: Dr. Stevenson refers to the column written by former radio and television commentator William Winter which appeared on the editorial page of last Thursday's issue of The Wayne Herald. In it, Winter severely criticized the Central Intelligence Agency for trying to overthrow the government of Salvador Allende in Chile. Winter also criticized the United States for supporting dictators around the world when it was in the best interests of private American companies.]



American Fork, Utah, Citizen
 "One of the essential qualities of a good leader—even on the lowest level, is the ability to know when to depart from the normal: when to take risks. On the other hand, the person who always upsells the applicator can be a disruptive influence. The art of leadership is to retain the adventurous spirit without going overboard."
 Covington, Tenn. Leader
 "Some fear that in the not-distant future people will stop asking, 'What is happening to the dollar?' and start asking, 'What happened to the dollar?'"

GRANDPA'S BOY



By **BRAD ANDERSON**



WAY BACK WHEN

30 Years Ago
 Nov. 22, 1942 Harold Bryngelson, Wayne, has been chosen new county agent at Pierre. Marguerite Einung, Wayne, has earned her wings as a Pioneerama Central airline hostess, and has been assigned to a station in Washington. Col. Herman Carlsons, who received an honorable discharge from the Army at Ft. Logan, Colo. arrived in Winside Wednesday. Word was received by AAA office stating that gun pickers have been removed from remaining restrictions. Jim Morrison was awarded the bronze palms to the Eagle Scout award at district court of honor of Logan, Valley District Covered Wagon Council of Boy Scouts Wednesday evening.

70 Years Ago
 Nov. 25, 1914 Warm, dry weather prevailed over the area again this week, making nearly a month since measurable precipitation fell in Wayne. Construction of the new Wayne salarum is nearing completion with only the interior yet to be finished. Chris Bargholz, Wayne, was elected County American Legion commander at a joint Legion Auxiliary dinner meeting Friday night at Carroll. The only set of hogs to top the Sioux City market Monday came from Watson and Bajer, Wayne. The 11 hogs weighed 201 pounds at the \$18.64 top. Woman's club sponsored a community bake sale and served pie and coffee Saturday. A total of \$156.25 was raised for research on muscular dystrophy.

Wednesday at Wisner Laurel Cooperative Marketing association this week announced consolidation with Osceola County Cooperative creamery, Sibley, Ia.

10 Years Ago
 Nov. 26, 1964 One of Spain's most popular song and dance troupes, Jose Melma's Bailes Espanoles, will perform in Wayne on Tuesday night at 8:15 in the college's Rice auditorium. Wayne Mayor Chris Tietgen received word last week that the Urban Planning Assistance application for Wayne has been approved. The State Normal Board Monday authorized a capital fund request of \$1,787,500 for Wayne State College in the 1965-66 biennium. Clifford Dahl was elected zone chairman at a Lion's club District 38 B meeting at the El Rancho Sunday.

15 Years Ago
 Nov. 26, 1959 Suggestions from local citizens for means of solving Wayne's traffic problems were invited this week by City Councilman W. A. Koerber, chairman of the street committee. Fifty-one student council members from nine Nebraska colleges traded ideas on student affairs this weekend at WSTC. Nearly 2,000 acres of Wayne county cropland will be added under the 1960 conservation reserve program of the soil bank. ASC Chairman Carl O. Sundell reported this week. Thirty-one Wayne High musicians will participate in the annual Husker conference band clinic.



GOOD YEAR

SNOW TIRE SALE

SUBURBANITE XG POLYGLAS

Why Risk Unknown Makes When Goodyear Quality Costs No More

Blackwall Size	Pair Sale Price	Plus F.E.T. Per Tire No Trade Needed	Blackwall Size	Pair Sale Price	Plus F.E.T. Per Tire No Trade Needed
A78-13	2 for \$59	\$1.80	G78-14	2 for \$75	\$2.67
C78-13	2 for \$66	\$2.00	H78-14	2 for \$80	\$2.92
B78-14	2 for \$64	\$2.05	F78-15	2 for \$74	\$2.58
C78-14	2 for \$66	\$2.17	G78-15	2 for \$82	\$2.74
D78-14	2 for \$67	\$2.25	H78-15	2 for \$82	\$2.97
E78-14	2 for \$68	\$2.33	J78-15	2 for \$85	\$3.13
F78-14	2 for \$70	\$2.50	L78-15	2 for \$89	\$3.19

*Whitelias Only

Use Your Derby Credit Card!

Coryell Derby Service

Phone 375-2121 — Wayne, Nebraska — 211 Logan Street

This Thanksgiving

Let's Throw Off

Our Apathy and

Make A Fresh Start'

Thanksgiving Day, the day of turkey and trimmings, the day of rest and relaxation for those not busy in the kitchen preparing the tempting taste treats for which the day is noted. Thanksgiving Day, a day of football or perhaps a nap after eating too much, which on this day is permissible and even encouraged by those who have survived over the storm.

But there is a deeper and more lasting significance for this day, for it is a day of national thanksgiving. It is an American holiday, established in memory of the first Thanksgiving held in the 17th Century by our Pilgrim fathers after the first harvest had come in, marking an end to a long and difficult struggle for survival in the

promised new land.

Thanksgiving for America is a national holiday, although with deep religious significance, a day in which Jew and Christian are able to unite for prayer and the celebration of the very act of Thanksgiving. It is a day when even the non-religious person can be grateful, if for no other reason than that this person lives in a nation where an enforced religion is not allowed.

We can all be grateful, although our gratitude may take many different forms. We can be grateful for an on-going government that has found ways to change direction by prescribed and orderly methods. Most, though not all, can be grateful for an

abundance of nourishing food and a level of living that is far from the poverty known almost universally.

We can be grateful even though we readily admit that there are mammoth problems which confront us, that all is far from perfect, and still there is the belief that it will eventually be worked out, for this has been the American way. We can be grateful for services for friends and for the fellowship that joins various groups of people together.

We can be grateful, but are we truly grateful? We can be grateful, but do we let our gratitude show? One of the great strengths of the Psalmist was his clear cut insistence on praise and thanksgiving. "Sing to the Lord a new

song, for He has done marvelous things. Make a joyful noise to the Lord, all the earth; break forth into joyous song and sing praises." (Psalm 98: 1, 4).

So quickly do we lose our perspective of gratitude. In times of abundance we grow complacent; we take for granted that the abundance will continue. In good times, we tend to forget the bad times. It is a human trait. The ancient Hebrews, led from slavery into a new, promised land, all too soon forgot whose power had brought them out. The psalmist continually calls them to remembrance, and challenges them to praise and thank this gracious God.

Perhaps we too have grown compla-

cent, perhaps our efforts to give thanks and praise are not all that they should be. Perhaps we have grown apathetic.

If need not be a continual state, however, this Thanksgiving Day it is possible to begin again, to make a fresh start, to take inventory of all for which we may be thankful. And perhaps from just such a beginning we can begin to more regularly express our gratitude and learn first hand just what the psalmist meant when he declared, "For the Lord is good; His steadfast love endures forever, and His faithfulness to all generations." (Psalm 100: 5).

—By the Rev. Robert Haas,
Wayne United Presbyterian Church.

DIXON COUNTY COUNTY NEWS

COUNTY COURT
Eileen M. Hynes, Ponca, \$33, violation of stop sign.

Reginald V. Cook, Newcastle, \$33, hunting with aid of artificial light.

Larry L. Nelson, Ponca, \$33, hunting with aid of artificial light.

William R. Moore, Jr., Dixon, \$38, hunting with aid of artificial light.

Klaus E. Kamrath, Ponca, \$18, violation of stop sign.

Douglas Russell, Ponca, \$18, exhibition driving.

REAL ESTATE TRANSFERS
Ester S. Malberg to Kenneth O. and Elizabeth Anderson, lot 7, block 14, Pacific Townsite Company's first addition to Aiton, revenue stamps, \$13.20.

Sacred Heart Church of Emerson to William F. Jager, lots 11 & 12, block

5, original Emerson, revenue stamps, \$12.05.

Ernest R. and Mildred I. Bates to State of Nebraska, part lot 9, block 72, Ponca, average.

Lawrence E. and Erma Peterson to State of Nebraska, part lots 4 & 6, block 57, part lots 13, block 52, part lot 6, block 51, part lot 18, south addition all in Ponca, tax exempt.

Daniel J. Jr. and Joann J. Sullivan to State of Nebraska, part SE 1/4, SE 1/4, 22 1/2, tax exempt.

Thomas J. and Marian Warnock to State of Nebraska, part SE 1/4, SW 1/4, 22 1/2, tax exempt.

Kurtell and Francis L. Anderson, Charles J. and Bonnie M. Harder,

Oscar O. and Marion L. Harder, Mary Katherine and Dennis B. Gregory to State of Nebraska, part lot 9, block 23, Ponca, tax exempt.

Donald and Audrey Dohma and Mary Dohma, to State of Nebraska, part NW 1/4, 35 30 6, tax exempt.

Darrel L. and Mary J. Iversen to Wayne Federal Savings and Loan Association, W. lot 4, W. of N25 feet of lot 5, block 29, West addition to Wakefield, tax exempt.

Walter and Sylvia McAuliffe to Eric and Yvonne Nelson, lots 15 & 17, Block 14, Concord, revenue stamps, \$2.20.

Emil W. and Hildagard Ekberg to Lawrence V. and Doris D. Ekberg,

SE 1/4, 47 5, revenue stamps, \$32.20.

MOTOR VEHICLES REGISTERED
1973
Great Plains Supply Company, Ponca, Cd Fd Trk
Lawrence Fox, Dixon, Merc
Frank W. Frey, Emerson, Olds
Brown Oil Co., Ponca, Dpe Trk
Donald E. Miller, Wakefield, Chev

1974
Gary Whichel, Newcastle, Dpe
Dudley's Cycle Center, Ponca, Ka
wawa
Larry D. Shorer, Wakefield, Toyota

1973
Penny Hughes, Newcastle, Fd

1972
Charles L. Heikes, Wakefield, Fd

1971
Janet Barnes, Wakefield, Merc
Michael D. Dougherty, Newcastle, Fd, Pickup

1970
Jerald Chapman, Aiton, Rebel

1969
Darwin Rubick, Aiton, Dpe

1968
Gary Lamprock, Ponca, Chev
Charles H. Promes, Newcastle, Pont
Kenneth Thorpe, Waterbury, Fores
ter

1967
Morris LeRay Wayman, Dixon,

Chev

1966
Eileen M. Knott, Newcastle, Buick

1963
Lois M. White, Concord, Chev

1962
Michael S. Wigg, Aiton, Fd, Pickup

1962
Eugene W. Freeman Sr., Wakefield, Chev

1960
Artand Wurdeman, Wakefield, Fd
Pickup

1955
John A. Russell, Ponca, Chev.



In India, the howling of jackals is thought to be a sign of approaching misfortune.

GOBBLE UP THESE TURKEY DAY BUYS



STORE HOURS:
Monday-Friday — 9 a.m. - 9 p.m.
Saturday — 9 a.m. - 6 p.m.
Sunday 8:12 Noon - 6 p.m.

WAYNE, NEBR.
EAST HWY. 35

Prices Effective Thru
Wednesday, Nov. 27!

<p>Birds Eye COOL WHIP 9-oz. 69¢ Value 53¢</p>	<p>County Fair Brown & Serve ROLLS 65¢ Value 2/73¢</p>	<p>Libby Stuffed OLIVES 5 1/2-oz. 7 1/2" Value 2/89¢</p>	<p>Blue Bonnet MARGARINE Pound 79¢ Value 59¢</p>	<p>Jumbo WALNUTS In the Shell 59¢ Pound</p>
<p>Taylor Vacuum or Syrup SWEET POTATOES 55¢ Value 49¢</p>	<p>Shilling Black PEPPER 64¢ Value 4-oz. Can 37¢</p>	<p>18-oz. Good Value Strawberry Preserves 59¢ Value 47¢</p>	<p>Morrell No. 1 BACON 12-oz. vacuum pack *1.09 Value 87¢</p>	<p>Vlasic 32-oz. PICKLES Kosher Dill 83¢ Value 59¢</p>
<p>TV FROZEN CONCENTRATED LEMONADE 6-oz. Frozen TV 2/29¢</p>	<p>Tony's PIZZA *1.19 Value Hamburger. Canadian Bacon. \$1.09 Pepperoni, Sausage</p>	<p>100-ft. Roll HANDI-WRAP *1.19 Value 69¢</p>	<p>Aluminum Foil 12"x25" REYNOLDS WRAP 4/\$1.00</p>	<p>16-oz. COFFEE RICH Creamer 42¢ Value 29¢</p>
<p>Cove OYSTERS 8-oz. Can Victor's 75¢ Value 59¢</p>	<p>Grade A Medium EGGS Dozen 47¢</p>	<p>Freeze Dried Coffee 4-oz. Taster's Choice *1.37 Value \$1.37</p>	<p>Viva 140 Count NAPKINS Decorated Colors. 53¢ Value 2/89¢</p>	<p>Bondware PAPER PLATES 100 Count *1.09 Value 69¢</p>

Drugs & Cosmetics
STOCK UP AT CUT RATE PRICES

<p>Antiperspirant 2.5-oz. BAN ROLL ON Regular or Unscented \$1.29 *1.81 Value</p>	<p>Gillette 9-oz. FOOT GUARD Spray Powder or 9-oz. Clear *1.99 Value \$1.29 YOUR CHOICE</p>	<p>DESITIN Ointment 4.25-oz. Tube *1.98 Value 99¢</p>	<p>BRECK Hair Color *2.50 Value 99¢</p>	<p>Mentholated, Regular or Children *1.29 Value 69¢</p>
<p>Antiseptic for Dry Skin 10-oz. SEA BREEZE 99¢ *1.48 Value</p>	<p>New Dawn with milk color controller eliminates unnatural color, unwashed red, hairdresser. Shampoo-In Hair-Color *1.99 Value 80¢</p>	<p>Chapstick or Blistex 59¢ Value All Flavors 3/\$1.00 LIP BALM YOUR CHOICE</p>	<p>BRECK HAIR COLOR \$1.25</p>	<p>BEN GAY Ointment Regular 3-oz. *2.19 Value \$1.49</p>
	<p>Excedrin THE ULTRA STRENGTH PAIN RELIEVER 225 Analgesic Tablets \$2.29 *3.76 Value</p>	<p>BAYER Aspirin *1.25 Value 69¢ Good Only at Gibson's, Wayne, Nebr. Valid Thru Wednesday, Nov. 27.</p>		

FARM PAGE

NU Economist: Cattle Industry Might Stay Depressed Into 1976

Choice slaughter steers are likely to be in the \$40-45 range most of the next eight months, and prices of cows and nonfed steers and heifers probably will not change much from present levels unless good grass next spring causes marketings to drop.

Dr. Al Wellman, extension economist at the University of Nebraska-Lincoln, in analyzing the cattle situation for the remainder of 1974 and on into 1975.

"There is a tendency to think that when prices of fed cattle, feeder cattle and cows are as low in relation to costs as they are at the present time, the market is just temporarily low. On the contrary, it seems likely that the cattle industry may continue to be depressed through most of 1976, and some observers say until 1978," Wellman reported.

Wellman recalled that in 1973, many cattle feeders declared that "fed cattle prices can't go below 50 cents because our break-even point is higher than that."

Citing today's economic environment, he noted this statement "could be true in the long run, but feeders are finding they can't wait for the long run, they must survive in the short run."

"Cow-calf owners frequently have operated with feeder prices below their cost of production, he noted. This is because "many of the producers' resources have little alternative use, land values have appreciated and the cow herd is a secondary source of income for many operators."

Noting that the market for many commodities seems "very nervous and uncertain," Wellman ticked off some of the factors influencing the cattle industry which make management decisions tough to come by and live with.

"Current feeder cattle prices are the lowest since 1969, yet few are being bought for feedlot replacement."

In the face of expanded domestic use by livestock and exports, feed grain stocks have diminished and hay production is anticipated to be 11 per cent below last year. Pastures are below average. The high cost of feed grains and roughages has coincided with rising slaughter and continuing increases in cattle numbers.

"Many people think producers are leveling out cow numbers or liquidating them because cow slaughter has been up sharply since July. But this expansion is from a low point of slaughter and the total cow herd is larger now than previously," Wellman pointed out.

An increase in cows nationally over a year ago is likely, in January, even if cow slaughter continues sharply in the last half of this year, he continued. This upswing, plus another possible increase in cow numbers by January, 1976, promises an increase in the calf crop. Wellman observed.

Wellman explained the interaction of prices relating to

calves and feeders which has put pressure on "harned" stockmen to sell while at the same time feedlot operators have been reluctant to fill their lots.

Owners of young beef animals have been discouraged with low prices and feedlot buyers have been uncertain about profit prospects. Calf prices frequently are less than half of what they were a year ago. Prices of feeders are about the same per 100 pounds regardless of weight.

Even if a mild rise in fed cattle prices takes place this winter, a substantial rise in feeder cattle prices is not likely because of the large total beef supplies and the lack of optimism regarding future fed cattle prices, Wellman predicted.

Faced with little prospect for higher prices, owners of feeder cattle are under increasing pressure to sell because of high roughage and concentrate costs. Costs of maintaining cattle on farms and ranches will increase seasonally this fall and winter.

On the other side of the coin, placements of cattle on feed this year probably will be under 21 million head, down about 61 million head from two years ago. Wellman reminded. Changes in slaughter patterns have emerged in 1974 and are expected to change more in 1975. Calf

slaughter is up about 500,000 head this year over 1973, and the slaughter of steers and heifers has increased about 3 1/2 million head in 1974.

An expected increase of about 10 per cent in commercial slaughter in 1975 is expected to reflect a decrease in fed cattle marketings. In 1973, fed cattle provided 77 per cent of total cattle slaughter. Fed cattle probably will provide only two-thirds of this year's cattle slaughter and possibly about 60 per cent in 1975.

Wellman warned that "percentage fluctuations can be misleading in times of rapid change. Whereas cattle on feed inventories could reach 30 per cent less than a year earlier, an increased proportion will be in the heavyweight group, eating large amounts of feed daily. Thus, consumption of feed grains might be down only 20 per cent. And because of a shorter period of time on feed, the number of fed cattle marketed could be down by only five to 10 per cent."

Total employment rose by 2.7 million during 1973, leading to a sharp reduction in the number of unemployed workers and a significant decline in the overall jobless rate, according to the U. S. Department of Labor.

slaughter is up about 500,000 head this year over 1973, and the slaughter of steers and heifers has increased about 3 1/2 million head in 1974.

An expected increase of about 10 per cent in commercial slaughter in 1975 is expected to reflect a decrease in fed cattle marketings. In 1973, fed cattle provided 77 per cent of total cattle slaughter. Fed cattle probably will provide only two-thirds of this year's cattle slaughter and possibly about 60 per cent in 1975.

Wellman warned that "percentage fluctuations can be misleading in times of rapid change. Whereas cattle on feed inventories could reach 30 per cent less than a year earlier, an increased proportion will be in the heavyweight group, eating large amounts of feed daily. Thus, consumption of feed grains might be down only 20 per cent. And because of a shorter period of time on feed, the number of fed cattle marketed could be down by only five to 10 per cent."

Total employment rose by 2.7 million during 1973, leading to a sharp reduction in the number of unemployed workers and a significant decline in the overall jobless rate, according to the U. S. Department of Labor.

Area Farmer Branching Out Into Pheasants

An area farmer who raises pheasants as a hobby was featured in this week's Farm Weekly, Monday supplement to the *Sioux City Journal*.

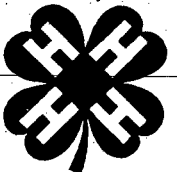
He is Gilbert Rauss of rural Wakefield, who runs the pheasant raising operation as a partner with brother, Walter, a businessman in Wayne.

Rauss says he and his brother had to learn how to raise the game birds from scratch, changing the operation as they went along.

He said he hopes to develop the hobby into a farming sideline which might bring in a little profit in the form of sales to out-of-state hunters or to area residents who like the flavor of pheasant.

One problem they have run into is that the birds will do much more fighting than chickens when they are raised in confinement. To keep them from harming each other as much as possible, the birds are de-beaked from time to time.

The Rauss brothers ordered the chicks from a Denver firm which flew the birds here last June after the brothers got their commercial permit required by the state of Nebraska for raising the pheasants and selling them.



Loyal Lassies

Loyal Lassies 4-H Club met Nov. 11 in the Waldron Bull home. Judy Temme, president, opened the meeting with the 4-H pledge.

Debbie and Lori Prenger became members with an initiation ceremony and received their 4-H pins.

The group discussed coming year plans and members chose their projects. Secret sisters name's were drawn.

Plans were made for a Christmas party Dec. 2 in the Vic Haase home.

Debi Penn, news reporter



Some people believe that a firefly in the house brings good luck.



This and That...
from YOUR COUNTY AGENT
DON C. SPITZER
WAYNE COUNTY EXTENSION AGENT

Pruning Roses in Fall
Be careful about pruning roses in early winter. If they are pruned severely, cold weather may kill them.

Fall pruning should remove only enough wood to eliminate damage from wind, snow and ice. Wait until spring to prune roses back for flower production.

Weak roses should be pruned hard. Hard pruning of strong roses is suggested if large flowers are desired.

Hybrid Tea roses should be pruned so three to five canes are left. Weak ones should be pruned so each cane is six inches high. Strong Hybrid Teas should be 10 inches tall before pruning.

Floribunda roses should have one third to one-half of the cane removed.

Climbing roses should be pruned after spring flowering. All canes that flowered should be removed because they will not bloom again.

Everblooming roses should be pruned late in the dormant season. Everblooming roses flower on the new spring growth.

The old laterals should be cut back to two or three buds. Some of the old canes should be removed each year. And all surplus shoots should also be removed.

Carcass Meeting
Fifty-six beef carcasses were entered in Wayne County's first 4-H beef carcass contest.

Carcasses were evaluated on the basis of information provided by USDA graders at the packing plants where the beef was slaughtered. Each 4-H beef was tagged last March with a USDA carcass data tag that enabled the 4-H'er to receive this information.

Carcass placing was determined by the following formula:
Purple—Minimum of low grade carcass quality grade and 2.49 yield grade.

Blue—Minimum of low grade carcass quality grade and 2.50 to 3.49 yield grade.

Red—Minimum of high-good carcass quality grade and 2.99 yield grade or low choice carcass quality grade and 3.25 to 3.99 yield grade.

White—All others.

Dads Invited to UN-L Activity

Dads will get a chance to observe and become acquainted with their son's or daughter's surroundings when the University of Nebraska-Lincoln Agromy Club on Saturday, Dec. 7.

The program is designed to allow fathers to develop a better understanding of college studies and to give students, an opportunity to see more research labs. The Agromy Club has invited all agromy majors and their fathers, along with all agromy instructors.

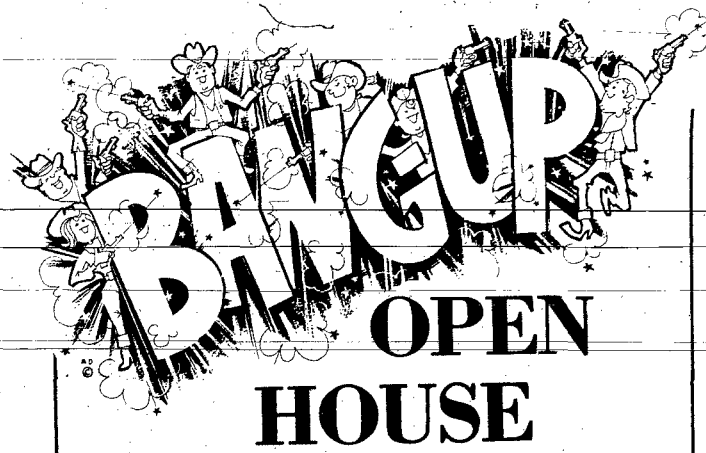
Area students who belong to the Agromy Club include: Layne Mann of Wayne, James Hansen of Winside and Keith Boeckenhauer of Wakefield.

Dad's Day will include a talk by Dr. T. A. Hartung, dean of

the College of Agriculture, at the evening banquet, a free smorgasbord for fathers. Also, there will be two tours, one a repeat of last year's for newcomers and one for those who had previously attended. Tours will be conducted through Keim Hall research facilities, Loeffel Meat Lab, Tractor Testing Lab, wheat and seed science facilities, Miller Hall's computer section and Plant Industry.

Classroom like discussions will be presented by professors, on such topics as feedlot pollution, fertilizer shortages, irrigation, computers in agriculture, the new grading system in beef, soil testing and tractor testing.

Around 130 persons are expected to attend the event.



Thursday, Dec. 5th

From 11 a.m. - 4 p.m.

Ham Sandwiches - Beans & Coffee Will Be Served!

Free PRIZES
—Just Register—

Wayne Grain and Feed
East Elevator Office - On Logan Street



Town & Country WINTER TIRE



SAVE \$620 TO \$970 PER PAIR

Famous *Town & Country* with deep-biting center "Z" bar tread and strong 4-ply cord body

- ✓ Concave molded to put aggressive Town & Country tread in full contact with road for excellent traction
- ✓ Four plies of polyester cord provide the strength and smooth ride you want in winter tires
- ✓ 96 stud holes for insertion of "Ice Grip" studs (studs not available where prohibited by law)



You go thru ice, mud and snow...or WE PAY THE TOW!

SIZE	SALE PRICE Blackwall (each)	SALE PRICE Whitwall (each)	R.E.T. per tire
B78-13	\$27.50	\$30.60	\$1.83
C78-13	28.00	31.00	1.99
C78-14	29.05	32.25	2.07
E78-14	30.20	33.65	2.24
F78-14	31.40	34.85	2.41
G78-14	32.70	36.35	2.55
H78-14	35.20	39.15	2.77
F78-15	32.20	35.80	2.42
G78-15	33.65	37.30	2.63
H78-15	36.05	40.10	2.82
J78-15	—	41.55	2.99
L78-15	39.10	43.45	3.13

All prices plus taxes... NO TRADE-IN NEEDED!

MERCHANT OIL CO.
121 West 1st Street Phone 375-3340

'It's Tough, But It's Been Tougher,' Speaker Says

Nebraska farmers may be facing tough times today, but it's wrong to think that the pioneer farmers had it any easier. In fact, they probably faced much tougher times when they were trying to scratch out a living in the early years of this state.

That's the message Dr. Robert Manley, history instructor at the University of Nebraska-Lincoln brought with him for his talk at Saturday night's annual Chamber of Commerce Farmer Appreciation Dinner at Wayne State's Student Center.

The dinner attracted nearly 500 area farmers and local businessmen — close to 100 more than attended last year's dinner.

Dr. Manley spiced his talk with songs popular with pioneer farmers and a story about the trouble one pioneer had in attracting his sweetheart to Nebraska. After several years the man finally enticed her to



EMIL VAHLKAMP

come to Nebraska and marry him, but only after she had raised serious doubts about a land without trees, homes made

out of "Nebraska marble" (sod) and using cow chips to cook and heat with.

Manley also threw in a couple jokes along with his talk and singing. He noted that "a recession is when your neighbor is out of work and a depression is when you're out of work."

That was similar to the one told by the master of ceremonies, C. O. Emrich of Norfolk, who said the only difference between the recession now and the recession of the 1930s is that "back then we didn't have to work."

Manley said that his study of history has led him to believe that nations are strong when communities such as Wayne are strong. "Being here gives me an enormous sense that America is well," he said after noting that town and rural people have to have a strong sense of community and have to work together to get things done.

The Chamber during the evening was Emil Vahlkamp of Wayne, the farmer present at the dinner who has been active in farming for the longest period. When asked how long that was, he said simply, "All my life." He is 76 years old.

Vahlkamp retired from his farm and moved to Wayne seven years ago, but he noted that he is out on his farm about every day helping with some kind of work.

Also winning turkeys were Harvey Echlenskamp, who had the marked program, and Wes Rubeck, selected because his birthday was closest to the date for the dinner. Rubeck turned 72 Sunday.

Recognized by dinner chairman Ken Liska, local veterinarian, were the members who worked on the committee in charge of the dinner. They include Maurice "Red" Carr, Gene Cornett, Fred Gilder, Steve, Don Spitz, Pat Gross,



WITH NEARLY 500 businessmen and area farmers in attendance, the Student Center at Wayne State College was nearly filled Saturday night for the Wayne Chamber of Commerce's annual Farmer Appreciation Dinner. At the head table, from left, are Dr. Ken Liska, Dr. Wayne

Wessel, C. O. Emrich, mayor Freeman Decker and the Rev. S. K. deFrees. Listening to master of ceremonies Emrich (bottom left) is Liska, and welcoming the farmers to the dinner is Wessel.

NOW . . . YOU CAN PUT YOUR FINANCIAL PICTURE TOGETHER EASIER . . . NORFOLK 1ST FEDERAL HAS LOWERED THEIR MINIMUM DEPOSIT FOR 7.50% CERTIFICATES TO \$1,000.00.



TRY OUR

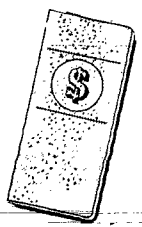
48-Month

7.50%
Annual Rate
Compounded Continuously
\$1,000.00 Minimum
EFFECTIVE ANNUAL YIELD
7.788%

SAVINGS CERTIFICATES
SECURE INVESTMENT

YOU COULD START COLLECTING TODAY!

We'll be glad to show you how easy savings can be and how fast they add up — especially with our high interest! If you're interested in your own financial future — come see how interested we are!



A substantial penalty will be imposed upon early withdrawal of Certificate accounts.

217 Norfolk Avenue

THE GO-AHEAD PLACE FOR GET-AHEAD PEOPLE

NORFOLK 1st FEDERAL SAVINGS AND LOAN ASSOCIATION

Phone 371-9388

Norfolk, Nebraska

Keith Jech, George Thorbeck, Roy Korfh, Bob Merchant, Dean Peterson, Russ Tiedtke and Bob Jordan.

A total of 91 businesses and individuals contributed to help make the dinner possible. They include:

- Arnie's, Associated Insurance & Investor, Ben Franklin Store, Bill's Cafe, Bob's Farm Service, Carhart Lumber Co., Carr Implement Co., Coast to Coast Store, Corpell Auto, Daters Jewelry, D & K Bottle Shop, Evans' Standard Farm Services, Gen. S. K. deFrees, Dr. Richard DeNayer, Daescher's Appliances, Fleming Concrete, Ellis Barber, Fat Kat Feeders Fertilizer & Chemical, Wayne F. Scher, Wayne F. Hess, First National Bank, Fredrickson Insurance Agency, Gerald's Painting and Decorating, D. J. Gosage, Goehring, Grady, Rexall Store, Dr. S. S. Hiler, Henry Schumacher Funeral Home, Jack & Jill Store, Keith Jech, Johnson's Frozen Foods, Kauf's, King, Karpels, Dr. William A. Krumpholtz, Laska Supply, KITCH Radio, Kayser Electric, Kub's Department Store, Loan Valley Implement, Max Lundstrom, Charles E. McDermott, McNatt Hardware, M & H Apco, M & S Oil Co., Morris Home Improvement Co., Dr. Roy Watson, Melody Cleaners, Merchant Oil, Midwest Land Co., Miller Agency, Morning Shopper, Morris Machine Shop, Northstar Nebraska Insurance, Northwestern Bell, O & L Interiors, Olds & Swartz, Orle, Construction Co., Pat's Beauty Salon, Property Exchange, Sav Mor Drugs, Lytle Seymour, Shrader Allen Hat, chery, Dr. Gordon W. Shupe, LeRoy Simpson, Dick Sorvosen, Dennis Vangelier, State National Bank & Trust Co., State National Farm Management, Surturf's, Swan's, Luan, Swan's Ladies Store, Swan's TV, George Thorbeck, Tri- angle Finance, Col. Ward, Wayne Auto Parts, Wayne Book Store, City of Wayne, Wayne County, Public Power, District, Wayne Federal Savings & Loan, Wayne Grain & Feed, Wayne Greenhouse, Wayne Herald, Wayne Shoe Co., Wayne Veterinary Clinic, Wayne Vets Club, Dr. Wayne Wessel, Justice Squary, Wolke Auto Service, Bill Workman, Workman Auto.

4-H CLUB NEWS

Dad's Helpers
Dads Helpers 4-H Club met Nov. 18 at the Northeast Station, near Concord. The meeting was opened by the pledge to the flag and the 4-H pledge.

Record books were distributed and planning sheets for the year were filled out.

Lorrie Garvin gave a talk on cameras and Anita Fritschen on the uses of pig skin.

The Garvins and the Gunners' sons served lunch.

The next meeting will be a chili supper Dec. 14 at 7 p.m. for members and their families. Everyone should bring a bowl and silverware. There will be a grab bag gift exchange. Each member is to bring a white elephant for bingo prizes. The Hartmans and Roy Hansens will furnish dessert.

Gary Kessinger, news reporter.

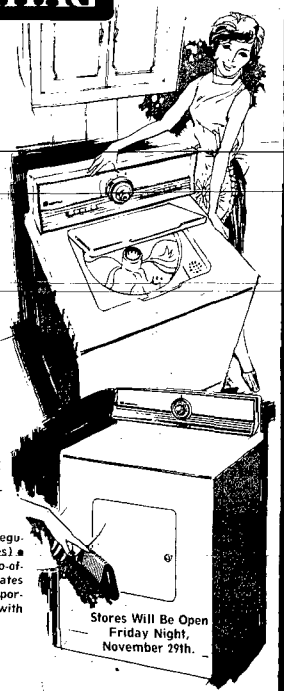
3 Good Reasons

Your Next Laundry Pair Should Be



The One To Buy In The First Place!

1. Quietness of Operation
2. Washability
3. Dependability



BIG CAPACITY MAYTAG WASHPOWER AUTOMATIC

FAST, GENTLE MAYTAG HALO-OF-HEAT DRYER

Permanent Press and regular fabric cycles • 3 water temperature settings • 3 water levels • Zinc-coated steel cabinet with tough acrylic enamel finish • Regular size tub with Power-Fin agitator.

Permanent Press (regular and air-fluff cycles) • Famous Maytag Halo-of-Heat drying eliminates "Hot spots" • Large porcelain enamel drum with easy-to-clean filter.

Stores Will Be Open Friday Night, November 29th.

MAYTAG . . . THE ONE MORE OF YOUR

NEIGHBORS OWN THAN ANY OTHER!

KUGLER ELECTRIC



We Service What We Sell

Russ Tiedtke, Owner
106 Main St., Wayne, Nebr., Ph. 375-1112
110 Norfolk Ave., Norfolk, Nebr., Ph. 371-1118

Community Thanksgiving Services To be Held at Methodist Church

Community Thanksgiving Services will be held at 7:30 p.m. Wednesday evening at the United Methodist Church in Allen. The message will be given by Rev. Clifford Lindgren of the First Lutheran Church. Special music will be furnished by the three participating churches which include First Lutheran, United Methodist and Springbank Friends. Rev. Waylen Brown will assist in the service.

Community Club
Members of the Allen Community Development Club voted to order 400 seedling trees at their meeting held Monday evening. The trees, to be delivered in April, will be made available to residents of Allen free of charge.



COUNTY COURT:
Nov. 22 — Pamela A. Schriener, 24, Wayne, speeding; paid \$25 fine and \$8 costs.
Nov. 22 — David A. Tuttle, 20, Laurel, speeding; paid \$17 fine and \$8 costs.
Nov. 25 — Daniel J. Hendrickson, 18, Murdock, speeding; paid \$23 fine and \$8 costs.
Nov. 25 — Frances J. Langenberg, 31, Hawkins, no motorcycle qualification; paid \$10 fine and \$8 costs.
Nov. 25 — Howard F. Hansen, 37, Laurel, speeding; paid \$19 fine and \$8 costs.

to encourage replacing trees destroyed by Dutch elm disease. Allen businessmen who are members of the Community Development Club will sponsor a Christmas promotion Dec. 1 through 21 when a drawing will be held. Businessmen and members of their immediate household will not be eligible to participate in the promotion. Chairmen are Keith Hill and Craig Williams. Speaker at Monday evening's meeting was Pat Costigan, for-ester at the Northeast Station.

Concord: Costigan talked about the replacement of trees and programs that are available for such projects.

Rescue Unit Called
Allen rescue unit was called to the Horace Tibbetts home on Thursday evening where Mrs. Tibbetts was ill. She was taken to St. Joseph's hospital, where she remains a patient.

Hold Luncheon
ELF Extension Club will meet with Mrs. Clarence Jeffery Dec. 6 for a pot-luck luncheon, at 12:30 p.m. Those with last names beginning with A thru I are to bring a salad. The rest of the members are to bring a hot dish. Members 1-X are to bring a home made Christmas decoration for exchange.

LCW Meets Dec. 5
First Lutheran LCW will meet

Allen News

Mr. Ken Linafelter
Phone 635-2403

Dec. 5 for a 12:30 pot-luck luncheon. Mrs. Clarence Schroeder will be in charge of the lesson. Devotional leader will be Mrs. Richard Chapman.

Pack Packages
Friends Missionary Union will meet Dec. 5 at 1 p.m. to pack cheer packages for shut-ins. Everyone is to bring goodies for the packages plus enough for the lunch following the meeting which will begin at 2 p.m.

Plan Tour
Chattersew Club met Friday afternoon with Mrs. Basil Wheeler. The group decided to tour the House of Creation at Bancroft Dec. 7. Members will leave Allen at noon.

The Christmas pot-luck luncheon will be held Dec. 27 with Mrs. Jule Swanson.

Is Initiated
Kathy Chapman McGhee was initiated into the Omicron Nu Nov. 19. It is the highest Home Economic scholastic honorary. Requirements to belong to Omicron Nu you must have a grade average that is in the upper 10 per cent of the class.

FIRST LUTHERAN
(Rev. Clifford Lindgren, pastor)
Wednesdays: Community Thanksgiving Service, United Methodist Church.
Thursday: No bible study or choir.
Sunday: Worship, 9 a.m.

Sunday school, 10 a.m.
Wednesdays: Council meeting, 8 p.m.

SPRINGBANK FRIENDS
(Rev. K. Waylen Brown, pastor)
Wednesdays: Community

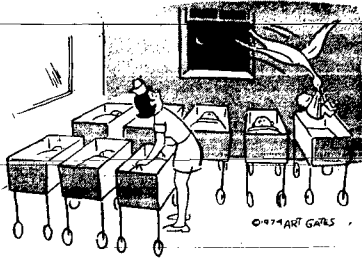
Thanksgiving service, United Methodist Church, 7:30 p.m.
Sunday: Sunday school, 10 a.m.; Worship, 11; FUMY Christmas party, 7:30 p.m.

Sunday school, 10; FUMY Christmas party, 7:30 p.m.

Community Calendar
Wednesday, Nov. 27: Community Thanksgiving Service, United Methodist church, 7:30 p.m. Public invited.
Monday, December 2: Town Board, 7:30 p.m.
Basil Wheeler returned home Thursday from Pender Community hospital where he had been a patient the past week.

Q. I am attending high school under the GI Bill. I had 12 months of active duty. Will I be eligible to attend college under the GI Bill?
A. High school training is provided without charge to your basic entitlement under the GI Bill. You will have 18 months eligible for college training under the GI Bill.

Q. I was discharged from military service June 15, 1966. How long do I have to enter on-the-job training?
A. Veterans discharged since January 31, 1955, now have ten years from date of last separation or until August 30, 1977, whichever is later, to complete eligible for on-the-job training.



Deadlines for Parcels, Letters Getting Close

Wayne area residents planning on sending packages and letters to persons scattered across the country and overseas are reminded that mailing deadlines are just around the corner. Wayne postmaster Wilbur Giese reports that the deadline for surface mail sent anywhere in the continental United States are Dec. 10 for parcels and Dec. 15 for letters. Deadline for both parcels and letters sent by airmail is Dec. 21, according to Giese. Although packages and letters sent after the deadlines may reach their destination by Christmas, those sent before the deadlines are more likely to arrive on time, according to Giese. Deadlines for surface mail going to Alaska and Hawaii are Nov. 30 for packages and Dec. 15 for letters. Airmail letters and packages sent to those two states are likely to reach their destination if mailed before Dec. 20. Although some deadlines have already passed, most surface parcels, surface greeting cards, air parcels and air greeting cards will still reach their destinations in Canada, Mexico, Central and South America, Europe and overseas countries, if mailed within the next few days.

WIN NOW

SALE... The Inflation Fighter

Your Used Car Is Worth More Today!

	1975 Ford Pinto Station Wagon. Radial ply tires, white sidewalls, bumper guards, radio. List price — \$3,505.00. On Sale \$3,302.00		1975 Ford Mustang II Hardtop. Bright yellow. White sidewall tires, radio, body side moldings. List price — \$3,858.00. On Sale \$3,572.00
	1975 Ford Granada 2-Dr. Dark Red, 6-cylinder, 3-speed. White sidewall tires, radio. List price — \$4,077.00. On Sale \$3,742.00		1975 Ford LTD 4-Dr. Sedan. Air conditioning, radio, tinted glass, white sidewall tires. List Price — \$5,516.00. On Sale \$4,576.00
	1975 Mercury Cougar 2-Dr. Ivory Bronze, white sidewall tires. Tilt wheel, speed control, air conditioning, AM-FM radio, tinted glass. List Price — \$6,492.00. On Sale \$5,539.00		1975 Ford F150 Pickup. 360 V-8, 4-speed transmission. Power steering, radio. Burns regular gas. List Price — \$4,840.00. On Sale \$3,935.00
	1974 Maverick 2-Dr. White, 6-cylinder, automatic transmission, power steering, radio, etc. List Price — \$3,984.00. On Sale \$3,499.00		1974 Pinto Squire Wagon. Automatic, Air Conditioning, luggage rack, tinted glass. List Price — \$4,020.00. On Sale \$3,521.00

New 4-Wheel Drive Pickups Arriving Every Day. Get Them Before Bad Weather Sets In!

Only Two 1974's Left at Great Savings This Week!

Sunbeam
Model W-C1

"MIST-STICK" ELECTRIC CURLER/STYLER ONLY

Now have beautiful hair fast without fuss. Add water, plug in and 5 minutes later you can mist curl, wave, make tendrils, tame stray locks, style — on the spot. Does it with all the gentle care of mist application and controlled heat. No rollers, clips or long waiting. Compact travel size, beautiful gold, white and copper tone color.

\$15.95

SAV-MOR DRUG
1022 Main Phone 375-1444

SHOP FOR **Holiday Savings** at your **Derby Gasoline Station!**

CLYDE
Loveable 25-
PLUSH PUPPY
\$3.99

Bulford the 40' Giant
\$19.95

SCENTED CANDLE
in Reusable Old-fashioned Crock
\$1.59

THE GASHOUSE GANG HAS WHAT IT TAKES!

TAKE IT EASY—
Slow down, conserve fuel and enjoy life!
Derby markets Star-Kleen Unleaded Gasoline and Leaded Regular, Premium and Blended Gasolines thru participating dealers.

WORTMAN AUTO CO.

119 East 3rd Street Your FORD-MERCURY Dealer Phone 375-3780

Even Dozen Club Plans Annual Christmas Supper

Mrs. Elsie Tarnow was hostess to the Even Dozen Club Tuesday with 11 members present. Guests were Mrs. C. V. Agler and Mrs. Joyce McGuire. Plans were made to hold the annual Christmas supper at the Wayne Vet's Club at 7 p.m. Sunday, Dec. 1.

Newly elected officers are Mrs. Elsie Tarnow, president, Mrs. Dean Meyer, vice president; Mrs. Arnold Hammer, secretary; Mrs. Emil Greve, treasurer and Mrs. Verona Henschke, gift committee.

Pitch served for entertainment with prizes going to Mrs. John Greve and Mrs. Dean Meyer.

The club will meet Dec. 17 with Mrs. Arnold Hammer for a 12:30 p.m. cooperative dinner and Christmas party.

Attend Meet
The Farm Fans Extension Club met Thursday with Mrs. Eldon Heinemann, hostess. Nine members were present and Mrs. Terry Meyer was a guest.

Mrs. Jim Nuernberger presented the lesson, "Many Faces of Vegetables." A report was given on the visit to the House of Creations in October.

Plans were made for a Christmas party to be held Dec. 12 at 7:30 p.m. at the Vet's Club in Wayne.

Extension Club Meets
Ten members and a guest, Mrs. Emil Lund, attended the Nov. 20 meeting of the Serve All Extension Club in the home of Mrs. Fred Ulecht. Members answered roll call by naming biodegradable and non-biodegradable items and telling how they waste electrical energy.

A report was given by Mrs. Kenneth Gustafson, reading leader. The lesson, "Let's Do Something About Our Environment," was presented by Mrs. August Longe and Mrs. Wilbur Ulecht.

Plans were made for a Christmas luncheon and party to be held at 12:30 p.m. Dec. 6 in the home of Mrs. Norman Haglund. There will be a gift exchange.

ST. PAUL'S LUTHERAN CHURCH
(H. L. Hennig, vacancy pastor)
Sunday: No worship service. Installation service for Rev. Carl Braecker, First Trinity Lutheran, Altona, 7:30 p.m.

Mrs. Ervin Böttger, Mrs. Jerry Anderson and children and Mrs. Verona Henschke, Betty and Cheryl, attended a demonstration party Sunday afternoon in the home of Sandra Henschke, Yankton, S. Dak.

Leslie News

Phone 287-2346

The Albert L. Nelson family and the Emil Tarnows attended the junior class play at Boemer Friday night. All were coffee guests in the LeRoy Giese home following the play.

Mr. and Mrs. Russell Johnson, Scribner, were Tuesday evening visitors in the Robert Hansen home.

Mr. and Mrs. Robert Hansen and girls attended the golden wedding anniversary of Mr. and Mrs. John Schnecko at Minden, Ia., Saturday. They were overnight guests in the Charles Tawzer home, Council Bluffs, Ia.

The Robert Hansen family, the Bill Hansens and Kristi and Arnold Brudigam were Sunday

guests in the Mrs. Mabel Schroeder home, Fremont, for a pre-Thanksgiving observance.

Mr. and Mrs. Clarke Kal attended funeral services for Frank Zach at Humphrey last Monday morning.

The Jim Thomsen family, Denver, were Saturday dinner guests in the Kemy Thomsen home and visited in the Bill Greve home in the afternoon.

The Jerry Anderson family were Friday evening supper guests in the Carl Anderson home to observe the wedding anniversary of the host and hostess, and the birthday of the hostess.

Mr. and Mrs. Jerry Anderson and family joined other relatives in the Larry Anderson home Saturday evening for Lisa's first birthday.

Mrs. Roger Hansen entertained at lunch last Monday afternoon for Mrs. Robert Masteller, Matt and Mindee, Fargo,

N. Dak., Mrs. Clarence Baker, Mrs. Kenneth Baker, Mrs. Emil Muller, Mrs. Clifford Baker and Mrs. Louie Hansen.

The Wilbur Ulechts, the Melvin Kraemers and the Walter Biermanns of Wisner met in the Clifford Baker home Friday night for an executive board meeting of the Aid Association for Lutherans, Bierman, an area representative, assisted in planning activities for the local AAL for the coming year.

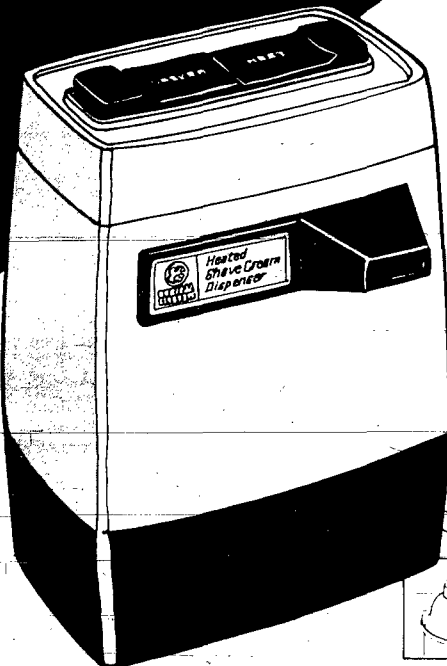
Unlike the eye, which is protected from harsh light by the eyelid, the ear is exposed to a continual barrage of environmental noise that can be hazardous to human hearing ability, says the Beltone Crusade for Hearing Conservation. To protect against the tragedy of an undetected hearing loss they urge everyone to have their hearing tested at least once a year.



GIFT IDEAS

FROM Gambles

Save up to 29%

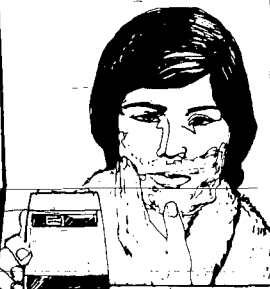


SAVE \$3.07

HEATED SHAVE CREAM DISPENSER

\$14.88 REG. \$17.95

Hot moist shave cream for a smoother more comfortable shave.



ALL PURPOSE
Holds 6- or 11-oz. aerosol cans with standard top.

Handy beater extender

Beater clips for storage

SAVE \$2.07

DELUXE 3-SPEED PORTABLE MIXER

Fingertip speed control and easy-grip balanced handle. 42 5294

\$9.88 REG. \$11.95

Compact handle

Carve and slice professionally

Fingertip control

Detachable 6 cord

CUSTOM ELECTRIC SLICING KNIFE

9" hollow ground stainless steel slicing blade

\$13.88

Surge of steam

Water window

34 steam vents

SAVE \$5.07

'SURGE OF STEAM' STEAM & DRY IRON

An extra surge of steam for deep-down wrinkles. 42 5299

\$17.88 REG. \$22.95

SAVE 29%

GENUINE WOOD CASE

ALARM CLOCK

Large easy-to-read dial, second hand

\$4.88 REG. \$6.88

CHARGE IT

Open Friday Night, November 29th!

Gambles



BARBARA LUHR
Wakefield Girl
Is Winner of
WS-Scholarship

Barbara Luhr, daughter of Mr. and Mrs. Clarence Luhr of Wakefield has received the A. F. Gulliver Memorial Scholarship to study at Wayne State College this term.

Miss Luhr ranked third in her 1973 graduating class at Wakefield High School. A sophomore business major at WSC, she carries a 3.75 grade point average. She is a member of Alpha Lambda Delta.

Pre Christmas Sale

MEN'S DRESS SHOES

\$15.00

Values to \$21.00

BOYS' & GIRLS SHOES \$4.00

WOMEN'S SHOES

Odds & Ends

\$5.00 and \$10.00

(Values to \$21.00)

Wayne Shoe Co.

206 Main

We of State Bank

join with you
our neighbors in
giving thanks
for bountiful blessings

On this Thanksgiving, let us all stop and give thanks for the blessings bestowed on us. For the special joys we know—family, friends, health, peace and prosperity. Here, we are especially thankful for the friendship you have shown us throughout the years. To all, a happy Thanksgiving.

The State National Bank and Trust Company

MEMBER F.D.I.C.

NON-THRU-SAT. 8 AM - 6 PM
THURS. EVE. 6 PM - 9 PM

SERVING YOU IS OUR BUSINESS

Stores Will Be Open, Friday Night, November 29th.



Pioneer Farm Songs Highlight Annual Dinner

SOME OF the nearly 500 area farmers and Wayne businessmen attending the Chamber of Commerce's annual Farmer Appreciation Dinner Saturday night (seen as Dr. Robert Manley of Lincoln sings another of the songs popular with pioneer farmers in Nebraska. Manley, on the University of Nebraska-Lincoln history staff, is an expert

on early farm life in this state, and he spiced up his talk Saturday night with songs early Nebraska farmers sang to keep their minds off the tough conditions they faced daily. The crowd turning out for the dinner nearly filled Wayne State's Student Center.

All Members Present at Delta Dek Bridge Club



Thought for Today
By Rowan Wittse
"Nothing is impossible; there are ways that lead to everything and if we had sufficient will we would always have sufficient means."
La Rochefoucauld

This observation is more appropriate to mankind as a whole than to individuals. We have seen some excellent examples of "impossible" objectives achieved through determination and the willingness to use all necessary resources... atomic power and space travel, to name only two.

As individuals, we can utilize the same concept. There is not limit to what anyone can accomplish if he is willing to pay the price. Is the goal worth the effort? That is a matter each of us must answer for himself, but, when the will is sufficient, the means will be found. Our reputation for sympathetic, understanding service is based on the fact that we truly care about the families who have put their trust in us.

Wiltse Mortuaries
Wayne, Laurel and Winslow

Delta Dek Bridge Club met Thursday with Mrs. Ann Roberts, hostess. All members were present and prizes were awarded to Mrs. John Rethwisch, Mrs. J. C. Woods, Mrs. Lloyd Morris, Mrs. Esther Batten and Mrs. Frank Viasak.

Mrs. Esther Batten, Mrs. Ann Roberts, Mrs. Otto Wagner and Mrs. Lloyd Morris will host a 6:30 p.m. dinner party with husbands as guests to be held in the Mrs. Batten home.

Mrs. T. P. Roberts will be hostess for the next afternoon party on Dec. 5.

SOCIAL CALENDAR
Saturday, Nov. 30: GST Bridge Club.
Sunday, Dec. 1: Adult Fellowship, Saddle Club.
Monday, Dec. 2: Hilltop Larks Christmas party.
Wednesday, Dec. 4: United Presbyterian Women.

Review New Books
The Carroll library board and librarian, Mrs. Lyle Cunningham, met Nov. 16 at the library. The new books were reviewed and five more added to the list. The librarian requests that all past due books be returned or paid for before additional books are loaned to these readers.

Two new view masters have been purchased for use in the library. Two films, "Donald Duck" and "Snoopy" have also been purchased.

The new book list includes "Tower of Babel," by West; "The Rose and the Yew Tree," by Christie; "Absent in the Spring" and "Iron Horse Country," by Cody; "Comanche Interlude," by Roberts; "Action at Beeches Island," by Brown; "Showdown by Mesa Bend," by Wesley; "Trouble Kid and Harigan," by Brand; "Trail of Doom," by Baker; "Proudly They Die," by Patten; "Rails to Thunderhead," by Norwood; "Nowhere Left to Run," by Ballard; "Court Martial," by Moore; "Mandala," by Pearl

Carroll News

Mrs. Edward Fork
Phone 583-4827

Buck: "Life and Death of Jesse James" and "Little Men" by Alcott, "Early Settlers Stories," by Cather, "First Four Years," "Little House in the Big Woods" and "On the Banks of Plum Creek," all three by Wilder. The next meeting of the library board will be Jan. 4

Draw Names
Social Neighbors met Thursday in the Kearney Lackas home with nine members present. Doris Haselhorst of Denver, Colo., was a guest.

Roll call was "A hint as to what I would like for Christmas."

Names were drawn for a Christmas gift exchange which will be held in the Witts Lage home Dec. 12 following a no-host 12:30 p.m. dinner for members. Prizes at cards were won by Mrs. Don Winklebauer and Mrs. Vernon Hokamp.

Hold First Meeting
The Edward Forks were hosts Friday evening for the first meeting of the season of the Pitch Club.

The Lem Joneses joined the club and the Lonnie Forks were guests.

Prizes were awarded to the Marion Glasses, the Clair Swan sons, Robert Peterson and the guests.

The Dec. 6 meeting will be in the Don Davis home.

Hold Card Party
The EDT family card party was held in the Roy Gram-

lich home with Mrs. Dick Longe as assisting hostess.

Card prizes were awarded to the Cyril Hansens, the Dale Claussens, Mrs. Larry Slevers and John Gathje.

Mrs. Ron Rohde will be hostess for the Dec. 5 afternoon club, which will be preceded by a no-host 1 o'clock luncheon.

UNITED METHODIST CHURCH
(Jim Scovil, pastor)
Sunday: Worship, 9:30 a.m.; Sunday school, 10:30.

PRES. CONGRE. CHURCH
(Gail Axen, pastor)
Thursday: Morning worship at Congregational Church, 9:30

a.m. Sunday: Worship at Presbyter-
ian Church, 10 a.m.; Sunday
school, 11.

ST. PAUL'S LUTHERAN CHURCH
(G. W. Gotberg, pastor)
Thursday: Worship, 9 a.m.

Sunday: Worship, 9 a.m.;
Sunday school, 9:50

Cataract, now accounting for 16 per cent of all blindness in the U.S., is most prevalent among those age 65 and over, 75 per cent of whom have or will develop the condition to some extent.

Self employed?



Let me tell you how to accumulate a retirement fund that is **100% Tax-deductible!**

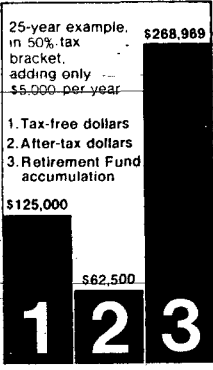
Ralph Mr. Keogh Palmer
Investment Account Executive
(402) 558-5400

Available at Commercial Federal

It's insured safe—IRS-approved—gives top returns and continued growth—won't fluctuate like stocks and mutual funds—saves tax dollars!

Now, if you're self-employed, you can set aside tax-free dollars for your retirement. Under the Keogh Plan, every dollar contributed to the basic plan, for you (and your eligible employees, up to the maximum permitted*) is 100% tax-deductible. And the earnings accumulate tax-free! No income taxes are payable on either the principal or earnings until cash is withdrawn from the fund—usually at a lower rate when you retire.

When full earnings compound continuously without tax deductions, the extent of growth is almost unbelievable! Let's say you add \$5,000 to your fund each year for 25 years. You'll have deposited \$125,000. BUT YOU'LL HAVE \$268,969 at the current Compudaily* interest rate of 5 1/2% per annum, compounded continuously.



—more than TWICE what you've put aside! And in the 50% tax bracket, your fund grows to more than FOUR TIMES the spendable dollars you've put aside! Even more in higher-rate Savings Certificates.

Add the maximum, \$7,500 each year for 25 years, and you'll deposit \$187,500—only \$94,500 of which, in the 50% tax bracket, is spendable dollars. But you'll accumulate over \$403,454—more than FOUR TIMES what you've saved in after-tax dollars at current Compudaily rates.

Don't wait another day to get full details on this amazing plan. Drop a card to Ralph Mr. Keogh Palmer, Commercial Federal Savings, P.O. Box 1103, Omaha, Nebraska 68101 or use the coupon below for complete information.

*The maximum, under the recently passed Pension Reform Law, is \$7,500 a year or 15% of earned income, whichever is less.

COMMERCIAL FEDERAL SAVINGS & LOAN ASSN.
Attn: Ralph Palmer, Dept.
P.O. Box 1103, Downtown Station, Omaha, NE 68101

Yes! I'm interested in a 100% tax-deductible retirement program. Please contact me.

NAME _____ PHONE _____
ADDRESS _____
CITY/STATE _____ ZIP _____

Holiday Enjoyment Starts with Finest Quality Foods

THANKSGIVING SALE

Stuff with Kellogg's Croutettes!

Fresh Produce

PASCAL CELERY
From California
JUMBO STALK **29¢**

OCEAN SPRAY FRESH — BUY TWO, FREEZE ONE

CRANBERRIES 1-lb. 29¢
Pkg.

FRESH SWEET YAMS 1-lb. 19¢

CALIFORNIA NAVEL ORANGES 5 lbs. \$1.00

INDIAN RIVER — RED or WHITE GRAPEFRUIT 1-lb. 17¢

GRAPES 1-lb. 39¢

CALIFORNIA GREEN ONIONS OR RADISHES 2 lbs. 29¢

FRESH GREEN CABBAGE 1-lb. 10¢

Swift's Empire Brand Tom **TURKEYS**

USDA INSPECTED

14-24 Pound Sizes **35¢**

NORBEST TOM TURKEYS
Grade 'A'
16-24 Pound Sizes
lb. **49¢**

NORBEST HEN TURKEYS
Grade 'A'
Tender Times
lb. **53¢**

If You Did Not Receive A Jack & Jill "Thanksgiving Sale" Circular This Week, Come Into Our Store and Check the MANY Holiday Specials! (CIRCULARS AVAILABLE)

<p>SWIFT PREMIUM DUCKLINGS Young Grade 'A' lb. 99¢</p>	<p>LEAN, PORK SAUSAGE lb. 79¢</p>	<p>LEAN, BOSTON BUTT PORK ROAST lb. 87¢</p>	<p>FARMLAND CANNED HAMS 3-lb. Tin \$4.49</p>	<p>Frozen Topping FROZEN TOPPING BIRDS EYE COOL WHIP 9-oz. Tub 63¢</p>
<p>OUR FAMILY CRANBERRY SAUCE STRAINED 3 300 tins \$1</p>	<p>PHILADELPHIA BRAND CREAM CHEESE 8-oz. pkg. 39¢</p>	<p>PLEASMOR GRADE 'A' BUTTER 1-lb. pkg. 79¢</p>	<p>Del Monte TUNA 6 1/2-oz. 49¢</p>	<p>GILLETTE ICE CREAM 5-Quart Bucket \$2.19</p>

We Reserve The Right To Limit Quantities

Kellogg's STUFFING MIX
7-oz. Package **43¢**

TAYLOR SWEET POTATOES
No. 3 Squal Tin **49¢**

PRINGLE'S POTATO CHIPS
Twin Pack **69¢**

Libby's FRUIT COCKTAIL
303 Can **37¢**

IVORY LIQUID
48-Oz. Bottle **99¢**

Prices Good
Tuesday
Wednesday

Jack & Jill
FOOD CENTER

SPECIAL ON SLIDES AND MOVIES

\$1.19

DEVELOPING SUPER 8 MOVIES, 8MM MOVIES, 20 EXP. SLIDES

DEVELOPING 36 EXPOSURE SLIDES... \$1.99

GIBSON'S

Thanksgiving Program Given at Home Circle

Home Circle met Thursday afternoon with Mrs. Francis Miller. Thirteen members were present for the program on Thanksgiving. Roll call was "How Have We Grown Wiser Through This Year?"

Officers for 1975 are Mrs. Marilyn Helm, president; Mrs. Bonnie Weststrand, vice president, and Mrs. Burrell Grosz, secretary.

Members and their husbands will meet at 7 p.m. Dec. 19 for aaffle supper in the Clarence Cur home.

Mrs. Johnson Hostess Friendly Tuesday Club met Nov. 20 with Mrs. Byron Johnson. Thirteen members and Mrs. Fred Johnson and Mrs. Art Walters were guests.

Roll call was "Our Favorite Christmas Recipe."

Next meeting will be a co-

operative Christmas supper at the Firehall, Dec. 9 at 6:30 p.m.

Honey Sunday Nets \$250 The Rev. Donald Meyer, chairman of the Honey Sunday drive in Wakefield, reported \$250 was raised for the Association for Retarded Citizens.

Seven volunteers canvassed Wakefield for the project, sponsored by the Wakefield Ministerial Association.

Circles Meet Rebecca Circle of the United Presbyterian Church met Thursday evening in the Derwin Hartman home with six members attending. Mrs. Phil Rouse gave the lesson. No plans were made for the December meeting.

Mrs. A. L. Pospisil was hostess to the Esther Circle Thursday morning. Five members attended and Mrs. Robert Oster-

Wakefield News

Mrs. Walter Hale Phone 787 2728

gave the lesson. The next meeting will be Dec. 12 with Mrs. Ed Schnasse at 9 a.m.

PEO Meets PEO met Nov. 18 at 7:45 with 25 members present. Faith Nuernberger gave the program on "Minority Groups." Next meeting will be a Christmas supper at the Cornhusker Cafe, Dec. 2.

King's Daughters King's Daughters of the Wakefield Christian Church met Thursday afternoon, Mrs. Pearl

Carlson had devotions and Mrs. Maurice Olson gave the lesson. Lunch was served by Mrs. Harold Olson and Mrs. Norman Jensen.

Next meeting will be a noon luncheon Dec. 12 with all ladies of the church invited to attend.

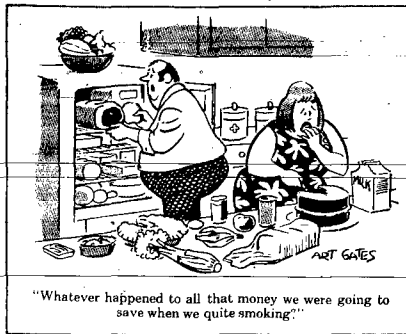
Meet Thursday Rural Home Club met Thursday at 2 p.m. with Mrs. Elvis Olson with eight members present.

Next meeting will be Dec. 12 with Mabel Bard at 2 p.m.

Applications Available Applications for board of trustees scholarships for use at the four Nebraska state colleges are available at the Wakefield High School guidance office.

The scholarship program, now in its fifth year, provides for the remission of tuition at the state colleges. Approximately 85 scholarships will be offered for the 1975-76 school year.

To be eligible for the scholarship, the applicant must be a graduating senior of a Nebraska high school, be a resident of Nebraska, rank in the upper quarter of the high school graduating class, attain a high



"Whatever happened to all that money we were going to save when we quitte smoking?"

standard of performance on the ACT or SAT tests, and be recommended for the scholarship by at least one high school administrator or teacher. Financial need is not a prerequisite for the scholarship.

VFW National Home, \$25 to the Veteran's Home in Grand Island for a bus, and \$50 to the firemen for a Christmas tree for the hospital.

Next meeting will be a Christmas supper at 6:30 p.m. Dec. 17 with Mary Alice Urecht. There will be a \$1 gift exchange.

Auxiliary Meets Eight members of the Allen Keagle VFW Auxiliary met Nov. 18 at the Firehall.

It was voted to send \$10 to the

ST. JOHN'S LUTHERAN CHURCH (Donald E. Meyer, pastor) Sunday Sunday school, 9:15

The Wayne (Nebr.) Herald, Thursday, November 28, 1974

a.m.; worship, 10:30. Tuesday: Elders, 8 p.m. Wednesday: Board of Education, 8 p.m.

SALEM LUTHERAN CHURCH (Robert V. Johnson, pastor) Saturday: Seventh and Eighth grade confirmation. Sunday: Church school, 9 a.m.; worship, 10:30; Wainwright League, 8 p.m.

UNITED PRESBYTERIAN CHURCH (Shin Kim, pastor) Saturday: Worship with "The Children of Hope" at Clarkson. Sunday: Sunday school, 9:45 a.m.; worship, 11.

EVANGELICAL COVENANT CHURCH (E. Neil Peterson, pastor) Sunday: school and confirmation, 10 a.m.; worship, 11. Tuesday: Ladies prayer fellowship, 9:30 a.m.

WAKEFIELD CHRISTIAN CHURCH (John Epperson, pastor) Sunday: Bible hour, 9:30 a.m.; worship, 10:30; Gospel Trave laires, 6 p.m.; family Bible hour 7: choir, 8. Wednesday: Hargens Bible

study, 5 p.m.; Bible study at Eppersons and Pearsons, 7:30. Bible study at Carharis, 8.

No Injuries Reported In One-Car Accident No injuries were reported in a one-car mishap two miles north and almost one mile east of Wayne on a country road about 10:30 p.m. on Sunday of last week.

State patrolman Dave Headley of Wayne, investigating officer, said a car driven by Marilyn Simmons of rural Wainwright went out of control after meeting another car on the road and went into the north ditch, doing a moderate amount of damage to the vehicle.

The accident was not reported until the following morning when farmer Robert Penn, whose fence was damaged in the accident, informed law enforcement officials.

Stores Will Be Open Friday Night, November 29th.

FALL PANELING SALE!

SAVE AT Carhart's

NEW!

NUTMEG Inflation fighter paneling at \$4²⁹

MAHOGANY 4x8 Panel

G-P VINYL-SHIELD Exceptional values in additional beautiful woodgrain panels at \$4⁶⁵

PECANWOOD 4x8 Panel

These fall paneling specials available for limited time only. Hurry in today!

DESERT Plus your choice of top quality paneling at \$4⁹⁵

WINDSONG 4x8 Panel

ABITIBI Top of the line at only \$7³⁶

MEADOWBROOK (avocado) Full 1/4" Thick 4x8 Panel

Phone 375-2110 Waynes, Nebr. 105 Main St

We Are Saying...

Merry Christmas

Stores Will Be Open Friday Night, November 29th.

With 'Merry Christmas Bucks' Prizes Totalling

\$100 to \$500 Prizes On Nights Open!!!

\$1500

Merry Christmas Bucks

Plus Our Regular Thursday Night Drawings for Happy Birthday Bucks - With a \$25⁰⁰ Consolation Prize

Two - \$500⁰⁰ Jack Pots

Five - \$100⁰⁰ Drawings

THE FIRST \$500 DRAWING FRIDAY NIGHT DEC. 9th

THE SECOND \$500 DRAWING FRIDAY NIGHT DEC. 23rd

RULES

- PARTICIPATING FIRMS -

- Persons eligible for prizes must be 16 years of age or older.
- Business owners, employers, managers, and members of their immediate families are not eligible for any of the prizes.
- Grand prize drawings for \$500 Christmas Bucks will be held on December 9 and December 23. Holder of the ticket number nearest the top each day will be the winner.
- Drawings for \$100 Christmas Bucks will be held on each of the following days: December 13, 16, 17, 18 and 20. Holder of the ticket number nearest the top each day will be the winner.
- Fifty (50) numbers will be drawn for each of the \$500 Christmas Bucks prizes on December 9 and 23. Numbers will be posted by merchants by 2:00 p.m. each day.
- Twenty-five (25) numbers will be drawn for each of the \$100 Christmas Bucks prizes. Numbers will be posted by merchants by 2:00 p.m. each day.
- Winning ticket holders must present these tickets at the Chamber of Commerce office before 8:00 p.m. the day the drawing is held in order to claim their prizes. No announcement of winners will be made until 8:00 p.m.
- The regular Happy Birthday Bucks drawings will be held every Thursday evening at 8:15.

One Ticket FREE To Everyone 16 Years Old And Over. Extra Tickets With Each \$1 Purchase Up To \$1000.

- PARTICIPATING FIRMS -

M & S OIL CO.
MCDONALD'S
MCNATT HARDWARE
MERCHANT OIL CO.
MINES JEWELRY
MORNING SHOPPER
SAV-MOR DRUGS
SHRADER-ALLEN HATCHERY
STATE NATIONAL BANK & TRUST CO.
SURBER'S
SWAN-MCLEAN CLOTHING
SWANS' LADIES STORE
SWANSON TV
WAYNE BOOK STORE
WAYNE GRAIN & FEED
WAYNE GREENHOUSE
WAYNE HERALD
WAYNE SHOE CO.
WITTIG'S SUPER VALU
WOLSKE AUTO SERVICE
WORTMAN AUTO CO.

SHOP THESE NIGHTS IN DECEMBER

DECEMBER 1974						
S	M	T	W	T	F	S
					5	
	9		12	13		
	16	17	18	19	20	
	23		26			

Stores Will Close At 4 p.m. on Tuesday, Dec. 24

Shop With Your Merry Christmas Bucks At Any Participating Firm



Area Residents Nearly Through Course on 1st Aid, Personal Safety

Twenty five area residents are nearly through a seven week first aid and personal safety course being taught every Thursday evening at the Northeast Station near Concord. Instructor for the course is Roy Stohler, Dixon County agricultural agent and area youth specialist who works out of the Northeast Station. The Dixon County extension service and the Red Cross are sponsoring the course.

Students in the class have been covering a wide range of first aid and personal safety subjects, everything from how to treat shock, choking, poisoning and drug overdoses. They also are studying such areas as emergency respiration, dressings and bandages, splinting bone breaks, emergency rescue and short distance transfer.

The course will end Dec. 12 with a written and skill exami-

nation which the students will have to pass to receive their certificates indicating they have completed the course.

The students will have put in about 18 hours of class work, about four more than required by the time the course ends, according to Stohler.

Area residents enrolled in the class include Karen Eisberry, Charles Francis, Ed Schroeder, Frank Stech, Ruth Victor, Wallace Victor and Bob Wingert, all

of Wayne. Roy Hanson, Mrs. Roy Hanson, Dello Lindquist and Shirley Stohler, all of Concord; Anna Borg, Frances Borg, Sterling Borg, Leslie Noe and Mrs. Frances Noe, all of Dixon; Barbara Biznie, LaDonna Noe, Veri Noe and Doreen Noe, all of Laurel; Bernice Lunz and Jane Lunz, both of Panca; and Ella Anderson, George Anderson and Mrs. Elinor Jensen, all of Wakefield.

MRS. GEORGE ANDERSON of Wakefield serves as a patient with a broken arm during last week's class on first aid and personal safety at the Northeast Station. Instructor Roy Stohler shows her how to use a magazine as a splint (far left), and then her husband takes over, tying the splint to her upper arm, putting the arm in a sling and cradling the sling by tying it behind her neck. Magazines are just one of many things which can be used as splints, students learned. Newspapers, old boards, tree limbs and the like can also be used.

Holiday Earnings Could Put Crimp In SS Benefits

Earnings from holiday jobs can affect monthly payments of students, housewives, and other people getting benefits from social security, according to Dale Branch, social security district manager in Norfolk.

holiday jobs will cause a reduction in their social security checks if their total earnings for 1974 are over \$2,400. For every \$2 you earn over \$2,400, \$1 in social security benefits is withheld. But no matter how much you earn for

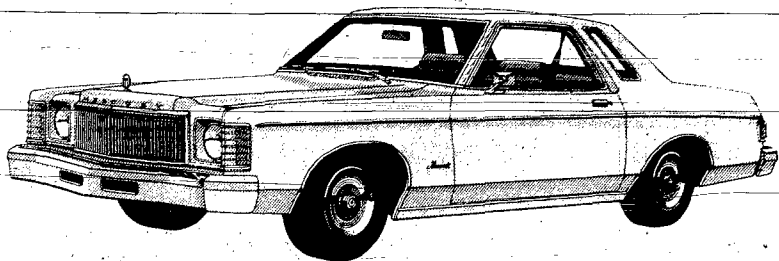
the year, you can get your full social security payment for any month in which you neither earn over \$200 nor do substantial work in your own business, Branch explained. People planning to take holiday jobs should notify social

security as soon as possible if they know their earnings for this year will go over \$2,400, according to Branch.

"Refunding overpayments to social security could cause financial hardship," he said. "People can get information about earnings and social security benefits by calling or writing any social security office."

Stores Will Be Open Friday Night, November 29th.

The right car! The right time! The right price!



MERCURY MONARCH

The new precision size luxury car with good mileage and room for 5 adults.

Monarch—a Mercury ride now in precision size. Monarch's ride is smooth, thanks to a suspension system tuned to standard steel-belted radial tires.

Never before have we engineered so many luxuries into a car of this size. The new Monarch. Available only at the sign of the cat.

Now available for delivery!

Wortman Auto Co

119 E. 3rd

Phone 375-3786



Give Thanks

Let's Join Together and Offer
A Thanksgiving Prayer for
Health, Family, Friends . . .
And for a Nation That Has Given
Us So Much in The Way of
Freedom, Justice and Peace.

We are most thankful for your patronage during the past year. To show our appreciation, KUGLER ELECTRIC will donate \$10⁰⁰ to the Church or Charitable Organization of your choice for Each Major Appliance purchased Thanksgiving Week.

(Nov. 25-30)

Have A
Most Enjoyable
Thanksgiving Holiday
With Your Family
And Friends!

KUGLER ELECTRIC



We Service What We Sell

106 Main St. Wayne, Nebr. Ph. 375-1112

Stores Will Be Open Friday Night, November 29th.

Naomi Circle Gives Program

Concordia Lutheran Church women met Thursday afternoon in the Mary Circle as hostesses. Naomi Circle gave the Thanksgiving program, "Think and Thank." Mrs. Glen Magnusen, vice president, presided at the business meeting. Annual reports were read for the general meetings of the year and for the circles by the leaders. The group voted to buy a Christmas tree for the church basement and a poinsettia. A report was given of the new dishes added to the kitchen. Election of new officers for 1975 was held with Mrs. Quinten Ewin, secretary; Mrs. Keith Erickson, treasurer; Lola Er-

Concord News

Mrs. Art Johnson
Phone 584 2495

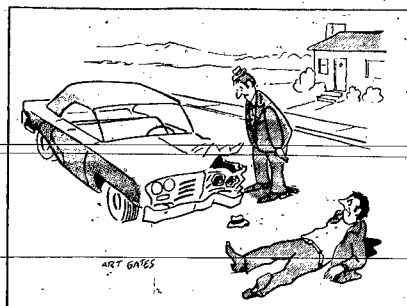
win, Faith and Mite; Mrs. Hans Johnson, outreach and fellowship, and Mrs. George Anderson, Christian action. An advent program by Mary Circle will be held Dec. 5.

Bon-Tempo-Bridge
Bon Tempo Bridge Club met Nov. 20 with Ann Meyer, hostess.

Marge Rastede and Ann Meyer won high score. Lois Witte will be the hostess Dec. 4.

Dinner Guests
The Arthur Johnsons and the Leon Johnsons, Laurel, joined the Pete Blakers, Sioux City for Thanksgiving dinner in the Amos Lukken home South Sioux City. Sunday Birthdays were also observed for Pete Blaker, Nov. 20, Tom Lukken, Nov. 23, Amos Lukken, Nov. 25 and Leon Johnson, Nov. 26.

Elect Officers
St Paul's Lutheran Ladies Aid met Thursday afternoon at the church with Mrs. Cliff Stalling, hostess. The session on "Gullit" was given by Mrs. Harlan Mattes. Officers for 1975 are Mrs. Clearance Rastede, president, Mrs. Clifford Stalling, vice-pres-



2 Initiates At NU Have Local Ties

A specialist at the Northeast Station-east-of-Concord and a student from rural Wayne were among 72 new members initiated into the Nebraska chapter of Gamma Sigma Delta, agricultural honor society, at a banquet Sunday evening at the University of Nebraska-Lincoln.

They are Don Kubik, district extension dairy specialist at the NU research facility near Concord, and Layne Mann, son of Mr. and Mrs. Frederick Mann of rural Wayne. Kubik is also involved in a dairy operation southwest of Wayne; Mann is a senior at the University. The 24 new members include six university faculty members, 24 graduate students and 43 seniors.

Strokes are not hopeless reminds the Nebraska Heart Association. Even severely paralyzed patients may make good progress.

Business notes.

Business to Be Back to Normal By This Friday

Although business activity will grind to a halt in Wayne and surrounding towns on Thanksgiving this week, things will be back to normal come Friday. Wayne County courthouse offices will close for Thanksgiving but will be open again on Friday for normal work, according to county clerk Norris Wetzel. City offices also will close on Thanksgiving and open again on Friday, reports city clerk Dan Sherry. Stores in the city will close for Thanksgiving, of course, but they will be open Friday evening to make up for not being able to open their normal Thursday night this week. The Chamber of Commerce office reports.

The BLACK KNIGHT

Upstairs

Saturday Night Special

Roast Prime Rib of Beef

Served with Salad, Potatoes, Bread & Butter. **\$4.50**

The Black Knight upstairs will be closed Thanksgiving Day!



CHRISTMAS DOLLAR SAVER SALE

Water-Proofed Heavy Canvas Tractor Heater Cabs

Low As **54.99**



SHOP TSC TODAY

Keeps you warm in the coldest weather. 3-section windshield and wings give excellent visibility. Fold down when desired. Engine flops on most models are easily removed on warmer days. Tool pocket in side wing. Models for many other tractors are also available.

FOR MAKE AND MODEL ALLIS-CHALMERS WD, WD45, Gas
IHC H Super W, Super W
DEERE 50, 60, 70, 520, 820, 720 Gas
IHC FARMALLS 460, 560, 580, 680, 780, 880, 980
IHC FARMALLS 100, 800, 1200 (104 Fuel)
DEERE 3010, 70, 4010, 20, 40, 3020, 4070, 510
UNIVERSAL Side Entry Cab, Large
UNIVERSAL Side Entry Cab, Small
UNIVERSAL Rear Entry Cab

STOCK NO	ONLY
2 9300	54.99
2 9375	54.99
2 9387	54.99
2 9472	54.99
2 9531	62.99
2 9638	62.99
2 9895	54.99
2 9898	54.99
2 9897	54.99

TRAVELLER
1949
LOW AS **19.99** Plus 1.95 F.E.T.
Size A-70-13 Blackwall
25% wider tread than regular snow tires, full 4-ply cord for proven durability and tire life.

SAVE 21%
YOUR CHOICE

100cc Effective Penstrep **2.99** Regular 3.79
100cc Fast Acting Combiotic **2.99** Regular 3.79

Effective treatment of many diseases. 2 antibiotics. 22-0755. 22-0648.

Super Snows

BLACKWALLS - F.E.T.	Regular	Sale
A70-13	1.95	19.49
E70-14	2.44	21.37
F70-14	2.59	22.49
G70-14	2.75	23.99
H70-14	2.98	25.12
F70-15	2.68	23.62
G70-15	2.84	25.49
H70-15	3.04	25.87
WHITWALLS		
E70-14	30.49	22.87
F70-14	31.99	23.99
G70-14	32.99	25.49
H70-14	35.49	26.62
F70-15	33.49	25.12
G70-15	35.99	26.99
H70-15	36.49	27.37
I70-15	37.99	28.49

Open **FRIDAY** Night Until **9:00**

Stores Will Be Open Friday Night, November 29th

AM/FM Tractor Radio 88.88 Regular 99.95
For 6 or 12 volts 60-2111. Headphones 60-2102 \$12.95 AM Radio, Reg. 64.95 60-2087 \$52.88

SAVE 11.07

Blue Ribbon Milk Replacer **988** Regular 11.95

- 50 Lbs. "Easy-To-Mix"
- 24% protein, 7 1/2% fat
- Calves will drink it
- Highly digestible
- Contains 100 gm. Tetracycline per ton. 22-1100

SAVE 2.07

500-Watt Booster Charger 48.88 Regular 57.95

Now Only **48.88** Regular 57.95

Charges 6, 8 or 12 volt batteries of 10 AMP or trickle rate. 4-7696. 4-7697-1000 watt - 20 Amp Regular 77.95 Now 64.88

ident; Mrs. Leroy Koch, treasurer; Mrs. Harlan Mattes, secretary and Mrs. Herman Stolle and Mrs. Bill Stalling, shopping committee.

Artemis Club Meets
Artemis Extension Club met Nov. 18 with Mrs. Leroy-Koch as hostess. The program was "What way is Environment Important to us." Mrs. Duane Koster, gave the lesson on "Let's do something about our environment."

Service man Larry Hewitt was remembered with gift. The Christmas potluck supper will be Dec. 14 in the Leroy Koch home.

Senior Citizens
Senior Citizens of Dixon and Concord met Friday in the Dixon parish hall for Thanksgiving dinner. Thirty six attended. The afternoon was spent in entertainment.

Dec 6 will be the next meeting with a noon Christmas luncheon and an exchange of gifts. There will also be a door prize. Everyone welcome.

Birthday Guests
Mrs. Oscar Johnson, Mrs. Arvid Peterson, Mrs. Raymond Erickson and Mrs. Mable Karst were Nov. 20 birthday guests of Mrs. Alice Setton, Laurel.

Attend Services
The Jim Clarksons, the Frances Clarksons, Norfolk, and the Leroy Clarksons, Neligh, attended the funeral of Mrs. J. Clark's brother, Alphonse Reicks Sr. of Petersburg Saturday at Petersburg. She died Wednesday at Elgin at the age of 65 years. The Clarksons were Friday overnight guests in the LeRoy Clarkson home. The Frances Clarksons, Norfolk, were Sunday guests in the Jim Clarkson home.

ST. PAUL LUTHERAN CHURCH
(H. K. Niermann, pastor)
Thursday: Thanksgiving worship, 10:45 a.m.
Saturday: Catechism class, 10:30 a.m.
Sunday: Morning worship, 9 a.m.; Sunday school, 10. Note time change for Sunday.

EVANGELICAL FREE CHURCH
(Detlov Lindquist, pastor)
Sunday: Sunday school, 10 a.m.; morning communion worship, 11. Billy Graham film counseling class, Laurel Methodist Church, 3 p.m.; evening service, 7:30; choir rehearsal, 8:30.
Tuesday: Morning Bible study, 9 a.m.; Womens Mission Society Christmas party, Clifford Carlson home, 7:30 p.m.
Wednesday: Billy Graham film counseling, Worlds Fellowship Church, Laurel, 8 p.m.

CONCORDIA LUTHERAN CHURCH
(Clifford Lindgren, pastor)
Thursday: Thanksgiving service, 10 a.m.
Friday: Fellowship soup supper, 6 p.m.
Sunday: church school and Bible classes, 9:30 a.m.; morning communion worship, 10:45.
Tuesday: Morning Bible study, 9 a.m.

The Dale Pearsons and Paul and the Richard Fishers were in Curtis to visit June Pearson at UNSTA Tuesday. They attended the volleyball double elimi-

Gifts to Remember Long Past December

Norelco SPEEDSHAVER® 20 ONLY **\$19.99**

Norelco 35T \$34.95 Value ONLY **\$29.95**

Norelco 40VIP SHAVERS DARES TO MATCH SHAVES WITH A BLADE. \$40.95 Value ONLY **\$34.95**

The Closeness Gift
The LADY NORELCO TRIPLEHEADER ONLY **\$23.99**

SAV-MOR DRUG Walgreen AGENCY

11 CASH LESS TO GET WELL AT SAV MOR DRUG

Model 30LT

NOW IS THE TIME TO ORDER Christmas Cards Hundreds on display The Wayne Herald

TSC STORE, WAYNE, NEB.

Green Valley Club Meets Thursday

Green Valley Club met Thursday afternoon in the home of Mrs. Bob Sausser with 11 members present. A Christmas gift suggestion was used for roll call. The officers from last year were elected for another term with Mrs. Hazen Boling, president; Mrs. Ed H. Keifer, vice president; Mrs. Emma Folkers, secretary-treasurer; and Mrs. Carl Brings, card lady. Games were played and Mrs. Emma Folkers won the door prize. Mrs. Lawrence Kuchla and Mrs. Dorothy Sausser were guests. Plans were made for a Christmas luncheon to be held Dec. 9 in the bank parlors.

Rebekah Lodge. Several members of the Bel-den Rebekah Lodge were guests Thursday evening of the Rebekah Lodge in Hartington. Mrs. Pearl Fish, Belden, gave her report as a delegate to the Rebekah Assembly held at Lincoln. Attending from Belden were the Elert Jacobsens, the Elmer Ayers, Mrs. Freda Swanson, Mrs. Dave Swanson, Mrs. Muriel Stapelman, Mrs. Wilma Bach, Mrs. Pearl Fish and Elmer McDonald.

Belden News

Mrs. Ted Leasley
Phone 935-2393

Eleven Are Present
Silver Star Extension Club met Thursday afternoon in the home of Mrs. Fred Pfanz with 11 members present. Roll call was answered by naming a biodegradable and a non biodegradable product. Mrs. Elmer Ayer, reading leader, read articles on "Doors," and "Grace Before Meals." Health and Music leaders also gave reports. Plans were made for a Christmas supper and party to be held Dec. 29.

Plan Party
Mrs. Robert Harper hosted the Jolly Eight Bridge Club Thursday evening. Mrs. Ray Anderson won high and Mrs. Fred Pfanz, low.

Royal Neighbors Lodge
Royal Neighbor Lodge met Tuesday evening in the home of Mrs. Pearl Fish with eight members present. A Christmas party and gift exchange was planned for the December meeting. Mrs. Pearl Fish reported on the Tri County Convention she had attended at Wayne.

Historical Society
The Cedar County Historical Society met Thursday evening in the bank parlors at Belden.

Laura Fredrick, Carroll, showed films in Nebraska. Lunch was served by the Floyd Roots and the Jack Baughns.

First Communion
The Ed Keifers, Lorene Keifer and Mrs. Louise Beuck attended the First Communion of Michelle Cook held Sunday in the Catholic Church, Columbus. They and the Ed H. Keifers and Anne were dinner guests in the home of the Gene Cooks in her honor.

Attend Baptism
The Robert Harpers attended the baptism of their grandson, Dustan Wade Robinson, held in the Catholic Church, Fremont and were Sunday dinner guests in the home of the Don Robinsons.

Birthday Guests
The Charles Hintz and the Chuck Hintz were Thursday evening visitors in the home of the Jack Hintz, Newcastle, to help Suzie Hintz celebrate her birthday.

PRESBYTERIAN
(Douglas Potter, pastor)
Sunday: Church, 9:30 a.m. church school, 10:30.

CATHOLIC
(Father Ronald Balliata)
Sunday: Mass, 9:30 a.m.

Steve Fish, Ogalala, and the Mike Murphys, Omaha, were weekend guests in the Earl Fish home.

The Frank Campbells, Wheeland, Mo., are visiting in the Dave Hay home. The John Lynches, Evergreen, Colo. and Lawrence Duggan, Coleridge, were Wednesday afternoon visitors of Mrs. Louise Beuck. Rev. Dale Westadt, Friend, Nebr., was a Monday visitor in the Glen Westadt home.

Invest Your Money Where It Will Earn **TOP Interest!**

INVEST IN A **Wayne Federal Savings Account!**

PASSBOOK SAVINGS

5 1/4 %

Interest Paid from Date of Deposit to Date of Withdrawal

Or Choose One of Our **SAVINGS CERTIFICATES** With Earnings Of **5 3/4 % TO 7 1/2 %**

"YOUR FUTURE IS OUR CONCERN TODAY"



WAYNE FEDERAL SAVINGS AND LOAN

305 Main — Wayne — Phone 375-2043



Stores Will Be Open Friday Night, November 29th!

—NOTICE—
ANNUAL STOCKHOLDERS MEETING OF THE WAYNE COUNTY FAIR AND AGRICULTURAL SOCIETY
Monday, December 10th
ELECTION OF OFFICERS AND OTHER BUSINESS MATTERS WILL BE TAKEN UP AT THIS MEETING.
ALL STOCKHOLDERS AND FAIR ENTHUSIASTS ARE WELCOME AND ENCOURAGED TO ATTEND.
Marlyn Koch
Secretary



BILL'S



Just South of Gibson's

Stores Will Be Open Friday Night, November 29th.

STORE HOURS

8 a.m. - 9 p.m. — Monday - Friday

8 a.m. - 6 p.m. — Saturday

8:30 a.m. - 6 p.m. — Sunday

Prices Effective Thru Wednesday, November 27th

Gorton Frozen WHITING 1 lb. 8-oz. pkg. 79¢	GILLETTE ICE CREAM 5-qt. bucket \$2.19	SHURFINE TOPPING 2 pkgs. 89¢
GILLETTE EGG NOG quart 89¢	KELLOGG'S CROUTETTES 2 7-oz. pkgs. 89¢	
MILK 2 1/2 gal. cartons \$1.39	CRICKET LIGHTERS Reg. \$1.49 99¢	ROLLS 2 pkgs. for 79¢
SHURFRESH CRANBERRIES 3 16-oz. cans \$1	SHURFRESH POTATO CHIPS TRIPLE PACK 89¢	
SHURFRESH BREAD 3 1-lb. loaves \$1	SHURFRESH OLEO 2 lbs. 99¢	
SWEET POTATOES 2 17-oz. squat cans 93¢	GILLETTE BUTTER FULL QUART \$1.39 plus deposit	7-BONE ROAST 69¢ lb.
ROLLS 8-oz. can 39¢	DEL MONTE PUMPKIN No. 303 Can 28¢	ARM ROAST 79¢ lb.
BANANAS pound 10¢	CRANBERRIES Ocean Spray Fresh 25¢ lb.	ARM SWISS STEAK lb. 89¢
RED POTATOES 10 lb. bag 69¢		POLISH SAUSAGE lb. 98¢

WE WILL BE CLOSED THANKSGIVING DAY

CHUCK STEAK
lb. **79¢**

BRAUNSCHWEIGER
69¢ lb.

LEAN STEWING BEEF
\$1.19 lb.

U.S.D.A. CHOICE BLADE ROAST
LB. **59¢**

BONELESS CHUCK ROAST
lb. **99¢**

BEEF SHANK
lb. **69¢**

turkeys

GOLD CREST DEEP BASTED TURKEYS

TOMS 16 to 20 lb. 49¢ LB.	HENS 8 to 14 lb. 55¢ LB.
--	---

We Have Turkeys Priced From 43¢ a lb.

BEEF NECK BONES
lb. **39¢**

GROUND BEEF
lb. **59¢**

BUTTERNUT COFFEE
3-lb. can **\$2.99**
WITH COUPON

JERGEN'S LOTION
10 oz. Reg. \$1.35 **87¢**
WITH COUPON

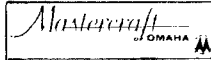
Save On Brand

SOFA SALE

Names by *Mastercraft* — *Kroehler*



Don't Miss This Sale!



Reg. Price		Sale Price
279.95	Kroehler Early American Sofa — Herculon Cover	only 199.95
700.00	Mastercraft Traditional Sofa, velvet	only 499.95
510.00	Mastercraft Sofa Velvet Floral Print	only 429.95
780.00	Mastercraft Sofa, green and gold velvet	only 559.95
660.00	Mastercraft Sofa, green and gold floral velvet	only 499.95
650.00	Mastercraft Sofa, brown and white velvet	only 499.95
630.00	Mastercraft Sofa, gold velvet quilted cover	only 489.95
610.00	Mastercraft Sofa, green velvet, 6" rubber cushions	only 429.95
713.00	Mastercraft Sofa, green & gold velvet. See this	only 519.95
570.00	Mastercraft Sofa, velvet cover, 6" rubber cushions	only 399.95
710.00	Mastercraft Sofa, as pictured, velvet quilted cover	only 499.95
599.95	Early American Sofa with wood trim, quilted cover	only 399.95

Don't Miss This Sale!

Don't Miss This Sale!

DOOR BUSTER		DOOR BUSTER MASTERCRAFT	
Mastercraft Sofa		Mediterranean Sofa	
Reg. \$900.00	ONLY \$489.95	Reg. \$870.00	ONLY \$464.50
Take Along Price		Take Along Price	
DOOR BUSTERS Mastercraft		DOOR BUSTER Mastercraft	
Blue Quilted Sofa		Traditional Sofa	
Reg. \$640.00	ONLY \$449.95	Green & Gold Velvet Quilted Cover	ONLY \$419.95
Take Along Price		Reg. \$780.00 Take Along Price	

COMPLETE 7 PC. LIVING ROOM GROUP

Studio - Herculon Cover
Hi Back Swivel Rocker
End Tables (2) Matching
Table Lamps (2) Matching
Occasional Chair

Reg. Price \$688.75

ALL 7 PIECES ONLY \$459.95

See This and Furnish Your Room Complete One Low Price!

4 PC. LIVINGROOM GROUP 4 pcs.

Consists of — 1 - Herculon Studio — 1 - Fully Upholstered Swivel Rocker — 1 - End Table — 1 - Table Lamp

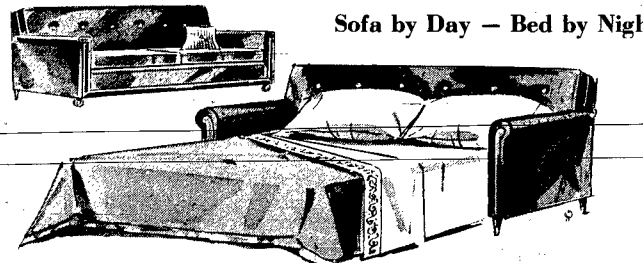
Reg. Price — \$429.00

See This and Save! **\$299.95**

CONVERTIBLE SOFA'S & SLEEPERS

Sofa Beds & Sleepers Designed for Every Home Decor!

Stores Will Be Open Friday Night, November 29th.



Reg. Price	Sale Price	
339.95	Hide-a-bed, green nylon cover, ball casters	239.95
339.95	Hide-a-bed, Nylon mattaize cover, foam cushions	239.95
329.95	Kroehler Sleeper, plaid Herculon cover	239.95
329.95	Kroehler Sleeper, green naugahyde	259.95
389.95	Green tweed Sleeper with foam mattress	279.95
419.95	Nylon Sleeper by Kroehler	339.95

BEDROOM FURNITURE SAVINGS

Triple Dresser - with 9 drawers — 4 Drawer Matching Chest. Regular or Queen Size Headboard

Reg. Price — \$369.00

ONLY **\$269.95**

60" Double Dresser & Mirror — 4 Drawer Matching Chest. Regular or Queen Size Headboard

Reg. Price — \$449.00

ONLY **\$319.95**

6 Drawer Double Dresser - formica top — 4 Drawer Chest — Matching Headboard

Reg. Price — \$269.00

U-HAUL PRICE **\$149.95**

ODDS & ENDS MUST BE SOLD 1 Of A Kind

Serta Hotel Reg. \$74.50

Perfect Sleeper, Box Spring — Blue & White Tich **\$49.95**

Take Along Price

SEVTA POSTURE CLASSIC

Queen Size Box Spring Reg. \$74.50 **\$49.95**

Take Along Price

TWIN SIZE

Bunkie Foundations Reg. \$119.00 **\$9.95**

Take Along Price

Diante Table Reg. \$49.95 **\$39.95**

Take Along Price

EASY TERMS

Nothing Down — 36 Months To Pay!

Buy Now & No Payments Till January '75!

Don't Miss This Sale!



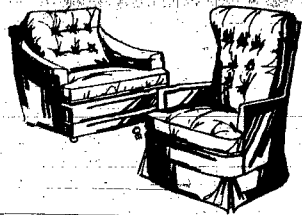
STUDIOS

Reg. Price	Sale Price	
189.95	Herculon plaid studio	only 149.95
239.95	Green Naugahyde studio	only 169.95
199.95	Herculon covered Studio, brown & gold	only 159.95
199.95	Herculon plaid studio	only 159.95
199.95	Herculon gold tweed Studio	only 159.95
199.95	Herculon gold & brown stripe Studio	only 159.95
219.95	Naugahyde Studio (black or brown)	only 169.95

14.95	5.95	4.95
-------	------	------

DISCOUNT FURNITURE

1 1/2 Miles North on Highway 11



Chairs & Rockers

Save \$\$\$

Shop Now - We Will Hold till Christmas

Reg. Price	Sale Price
89.95	Wood Arm Swivel Rocker, nylon cover..... \$4.50
49.95	Hi-back Maple wood Rocker..... \$2.50
129.95	Nylon Tweed Swivel Rocker, reversible cushions..... \$9.95
189.95	Hi-Back Swivel Rocker, red & gold stripe, velvet..... \$44.50
169.95	Low-back Green velvet Swivel Rocker, rev. cushions..... \$24.50
124.50	Low-back Green Velvet Occasion Chair, rev. cushions..... \$9.95
159.95	Orange velvet Swivel Rocker, rev. cushions..... \$19.95
159.95	Green crushed velvet Swivel Rocker, rev. cushions..... \$19.95
149.95	Green & gold stripe velvet Swivel Rocker, rev. cush..... \$109.95
159.95	Mini Green crushed velvet Swivel Rocker, rev. cush..... \$19.95
219.95	Gold stripe Hi-back velvet Swivel Rocker..... \$69.95
124.50	Gold Occasional Chair, velvet, reversible cushions..... \$9.95
189.95	Orange & gold stripe Swivel Rocker, rev. cushions..... \$34.50
224.00	Hi-back Decorator Swivel Rocker, rev. cushions..... \$74.50
129.95	Blue & Gold floral Swivel Rocker, rev. cushions..... \$9.95
219.00	Green stripe Hi-back Swivel Rocker, rev. cushions..... \$69.95
239.95	Hi-Back Early American quilted Swivel Rocker..... \$89.95
149.95	Gold Velvet Swivel Rocker, rev. cushions..... \$19.95
134.50	Blue Velvet Swivel Rocker, rev. cushions..... \$9.95
229.95	Gold pin stripe Swivel Rocker, rev. cushions..... \$79.95
229.95	Bronze Velvet Swivel Rocker, rev. cushions..... \$79.95

All Rockers Include Extra Arm Covers. See these and Many Others Too Numerous to Mention. Just Received a New Shipment of Styles and Colors.

Stores Will Be Open Friday Night, November 29th.

Discount Furniture

1 1/2 Miles North on Highway 15

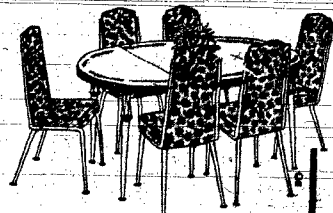
WAYNE, NEBRASKA

ODDS & ENDS MUST BE SOLD!

Dinnette Chairs 2 ONLY \$14.00 EACH TAKE ALONG PRICE	Pictures YOUR CHOICE ONLY \$2.95 TAKE ALONG PRICE
Floor Lamps 6-way switch \$49.95 Value \$30.00 TAKE ALONG PRICE	Stack Tables Set of 3 \$36.00 Value \$29.95 TAKE ALONG PRICE
Beanette Bean Bag Chairs 1 ONLY \$18.88 TAKE ALONG PRICE	Utility Chair Dress With Cushion \$32.00 Value \$26.95 TAKE ALONG PRICE
Magazine Rack Choice of Styles \$24.00 Value \$17.95 TAKE ALONG PRICE	Green & Black Herculon Cover Studio Reg. \$199.00 \$139.95 TAKE ALONG PRICE
Mastercraft Hi Back Rocker Reg. \$270.00 \$164.50 TAKE ALONG PRICE	

DINETTE CLEARANCE

Save 20% - 30% and Even More!



Reg. Price
119.95 36" Round Table with walnut woodgrain, 5 pieces, Formica top and 4 Chairs, 1 extra leaf..... \$4.50
109.95 36" x 48" x 60" Woodgrain Table, 6 Matching Chairs, 7 Pieces only..... \$9.95
219.95 36" x 48" x 60" Table with in-lay Formica top, 6 Matching Chairs, 7 Pieces only..... \$39.95
229.95 36" x 48" x 60" Butcher Block Table, with 6 Matching Chairs, 7 pieces..... \$49.95
119.95 Dropleaf Table, walnut-Formica top, 4 Matching Chairs, 5 pieces only..... \$4.50
159.95 36" x 48" x 60" Walnut Top Table, 6 Matching Chairs, 7 Pieces..... \$9.95
339.95 42" x 60" x 77" Table, 6 Decorator Chairs, 7 Pieces..... \$219.95
319.95 42" x 42" x 60" Pedestal Table, 4 Swivel Chairs, 5 pieces..... \$199.95
176.50 36" x 48" x 72" Table, 4 Matching Chairs, 5 Pieces..... \$119.95

DOOR BUSTERS
24" x 30" x 48" 4 Matching Chairs
Drop Leaf Table
Reg. \$119.00
5 pc's. only **\$69.95**

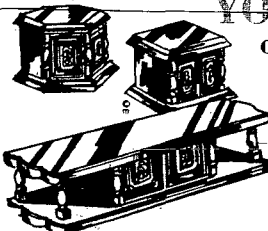


Be Sure and Bring In Your Christmas Coupon!

YOUR CHOICE OF TABLES

Choose from Maple - Pine - Spanish - Early American Traditional

Quality Tables by Mersman



Reg. \$69.00
See At Only **\$54.50**

WAYNE, NEBR.

1 1/2 Miles North

Discount Furniture

1 - 5 p.m. This Sunday Only

Open Sunday

Open Friday & Saturday - 9:30 a.m. - 9:00 p.m.

Sale Starts Friday

Good for any merchandise in our store.

Nothing to Buy - Just Deposit at Our Store!
WINNERS NOTIFIED DECEMBER, 27

Discount Furniture Christmas Bonus

NAME _____ ADDRESS _____

10 Bonus Certificates To Be Given:

1 - \$100.00	6 - \$10.00
2 - \$75.00	7 - \$10.00
3 - \$50.00	8 - \$10.00
4 - \$25.00	9 - \$10.00
5 - \$10.00	10 - \$10.00

COUPON

Notice: We Will Be Closed Wednesday, Nov. 27 & Thursday, Nov. 28!

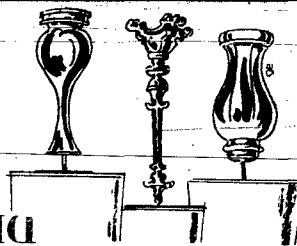
We Guarantee To Save You Money
No One Undersells Us!

On Everything In Our Store!

SAVE 20% - 50%

Supplement to The Wayne Herald

DECORATOR LAMPS
\$6.88 STARTING AT -
All Styles & Colors



DOOR BUSTER
Vinyl Twin Size
HEAD BOARDS
6 ONLY
Reg. \$15.00
\$5.99 ONLY

OTHERS AT - \$99.00 - \$119.00 - \$129.00

99.95 Recliners - Your choice of colors..... \$64.50
169.95 Berkline Recliners - 3 colors..... \$139.95
189.95 Berkline Recliner - Recliners - 4 colors..... \$149.95
229.95 Berkline Recliner - Recliners - 2 colors..... \$179.95
279.95 Berkline Velvet Recliner-Recliner..... \$219.95
189.95 Berkline Recliner (for that tall man)..... \$159.95

For That Perfect Gift

RECLINERS

Bedding is one of our specialties. We believe in selling you only quality bedding at the lowest possible prices. Wake up every morning without that nagging backache with one of these!



\$59.95 - \$69.95 - \$79.95

Choose Your Price

Choose Your Firmness

BEDDING

Values to \$119.95